

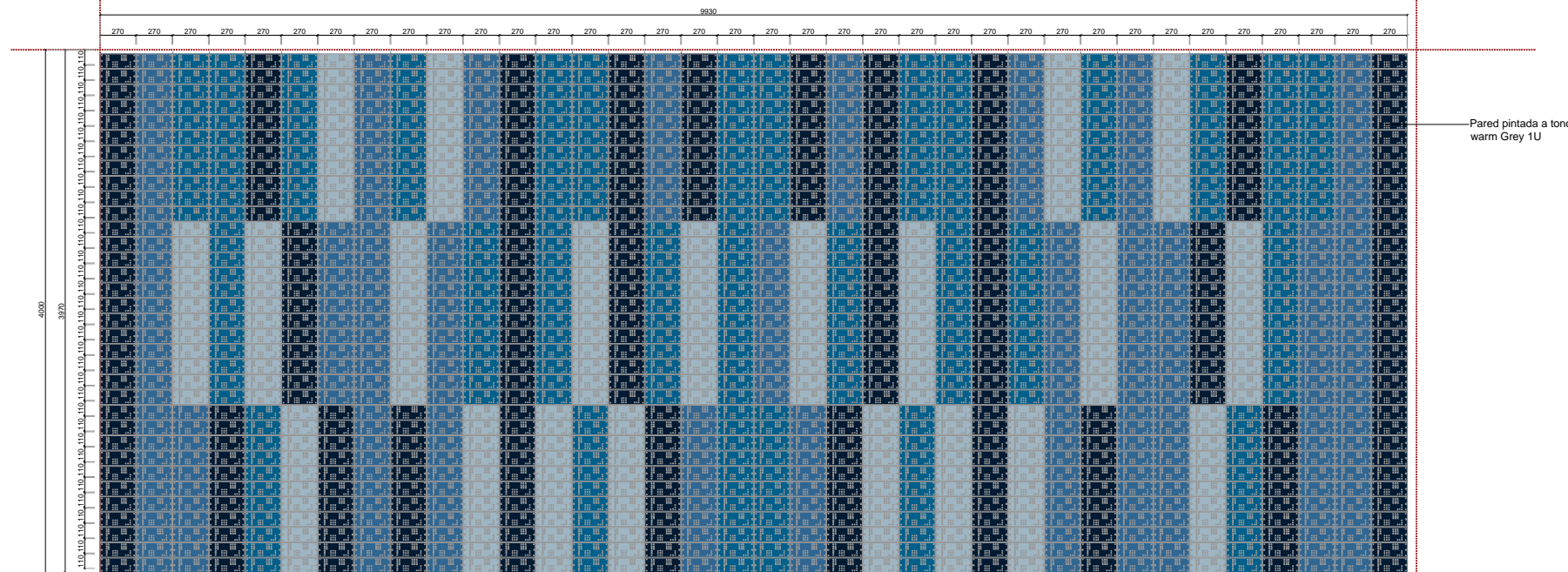
CA15B Cortina a medida en pared del spa, formada por laminados de madera en distintos tonos azules (SONAE ARAUCO) cortados a medida según diseño. Tiras de luz LED temperatura 3000° arriba y abajo de EBIR. Pared trasera pintada a tono Warm Grey 1U

Medición

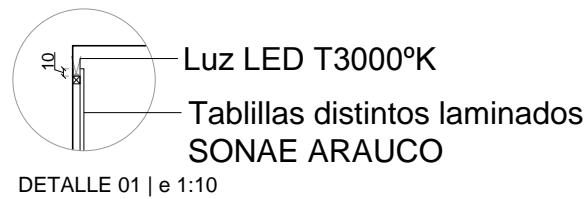
Laminados 11x27cm 1224uds Paramento: 38,64m²

- PARADISE BLUE
SONAE ARAUCO
- BLUE NAVY
SONAE ARAUCO
- FROZEN BLUE
SONAE ARAUCO
- BLUE TIBER
SONAE ARAUCO

DETALLE



ALZADO FRONTAL | e 1:50



PLANTA GENERAL

PLAN N°: 4609-DD-CA15B H2 DE H2

NAME: DISTRIBUCION Y CARPINTERIA
CORTINA. SPA

SCALE: 1: 50

DATE: 2019 / 10

UNITS: meters DIMENSIONS: A 3

REVISION TABLE		DATE
REV	MODIFICATION	

GENERAL NOTES

1. Contractor is to submit coordinated shop drawings to designer for approval prior to construction or installation of any item.
2. If dimensions are shown that conflict with the above notes, the issue is to be brought to the attention of designer for resolution prior to construction or installation.
3. This project only refers to the interior design of the space, without taking into account the local or state regulations. The architect will be responsible for compliance.
4. Each element must be installed in relation to the recommendations of the suppliers.
5. This project can not be reproduced without previous authorization of EstudiHac.

SPECIFIC NOTES

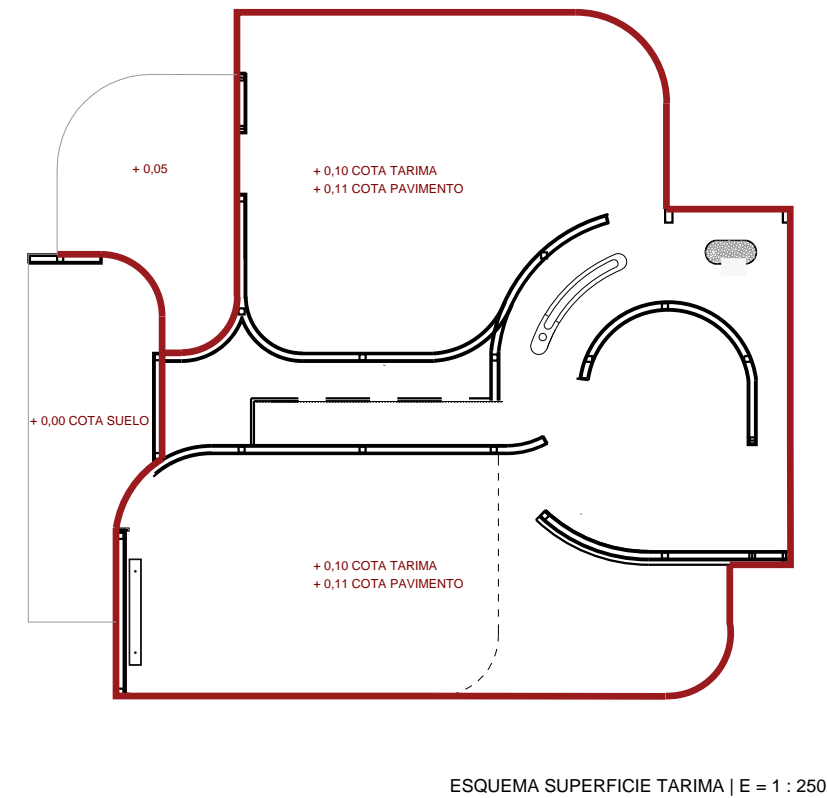
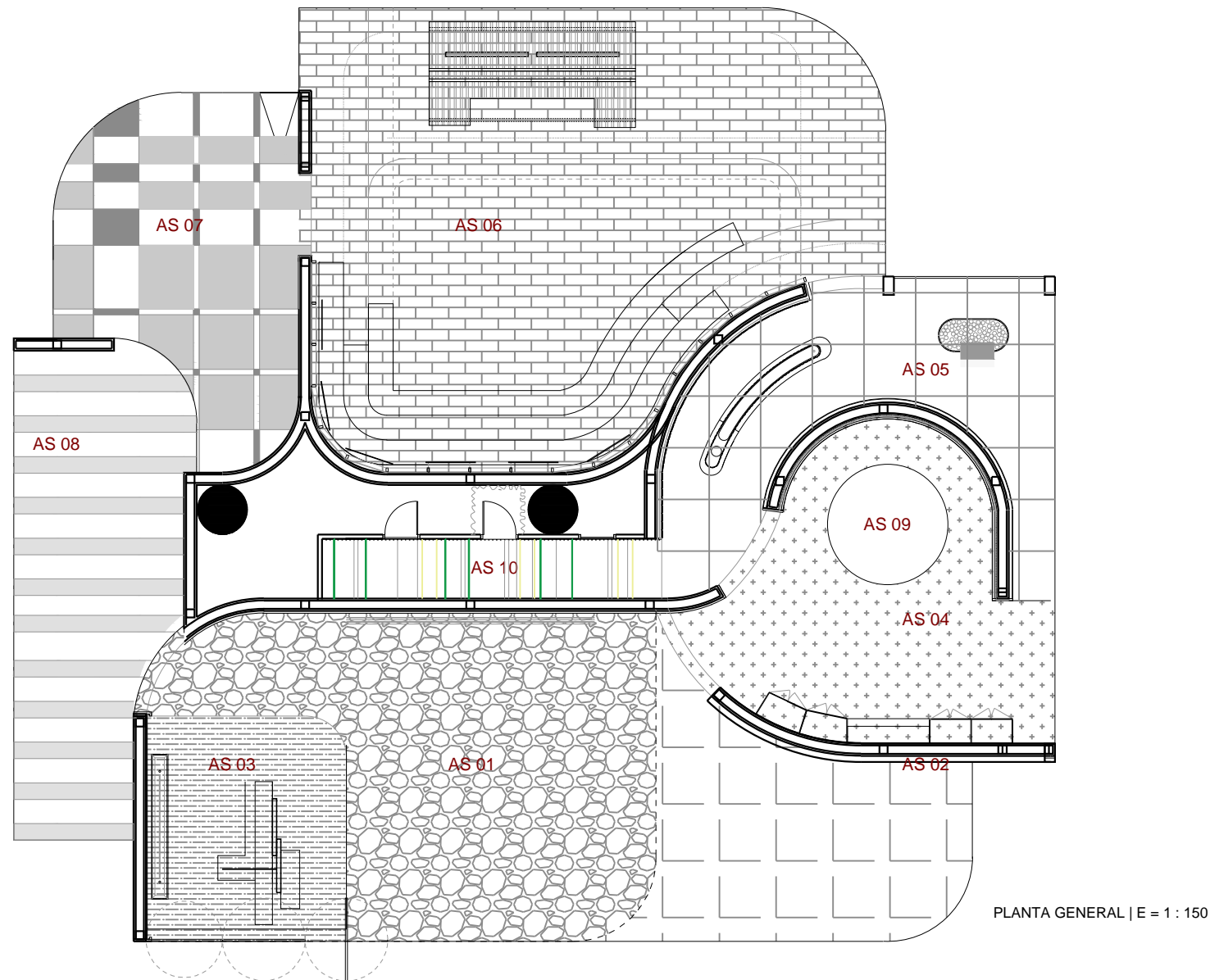
APLICA A:
SONAE ARAUCO
EBIR

REVISION TABLE		DATE
REV	MODIFICATION	
REV01		

GENERAL NOTES

- Contractor is to submit coordinated shop drawings to designer for approval prior to construction or installation of any item.
- If dimensions are shown that conflict with the above notes, the issue is to be brought to the attention of designer for resolution prior to construction or installation.
- This project only refers to the interior design of the space, without taking into account the local or state regulations. The architect will be responsible for compliance.
- Each element must be installed in relation to the recommendations of the suppliers.
- This project can not be reproduced without previous authorization of EstudiHac.

SPECIFIC NOTES



LEYENDA

	AS 01	_Pavimento / Formato 1 x 1m/ Ref: Knossos Grey F2289 / Firma: Sonae Arauco / Bariperfil
	AS 02	_Pavimento Authentic Concrete Color Titanium /Formato 1 x 1m/ Ref: ES1722362/Bariperfil
	AS 03	_Pavimento / Formato1 x 1 m /Ref: SK Terra Di Siena / Firma: Puricelli
	AS 04	_Pavimento / Formato 1 x 1m/ Ref: Verde Tópico 8810 - Aleta TH / Firma: Puricelli /
	AS 05	_Pavimento / formato 1 x 1m/Ref: Seastone Pale 2295 / Firma: Sonae Arauco
	AS 06	_Pavimento Madera Natural de Roble / Ref / Firma: Gabarro /
	AS 07	_Composición Suelo Tartán / Ref: Tarima Antique / Ref: Tarima Ash Blanco / Ref: Tarima Caspule hábano Greyma / Firma: Altoturia
	AS 08	_Pavimento / Vinilo Ref. / Firma /
	AS 09	_Pavimento / A medida Dibujo Estudi{H}ac / Firma: Bariperfil Barinsa
	AS 10	_Pavimento /Laminado Krono Swiss Gran Selection origin 497cm terra ac5/33/ Bariperfil

CUADRO DE MEDICIONES

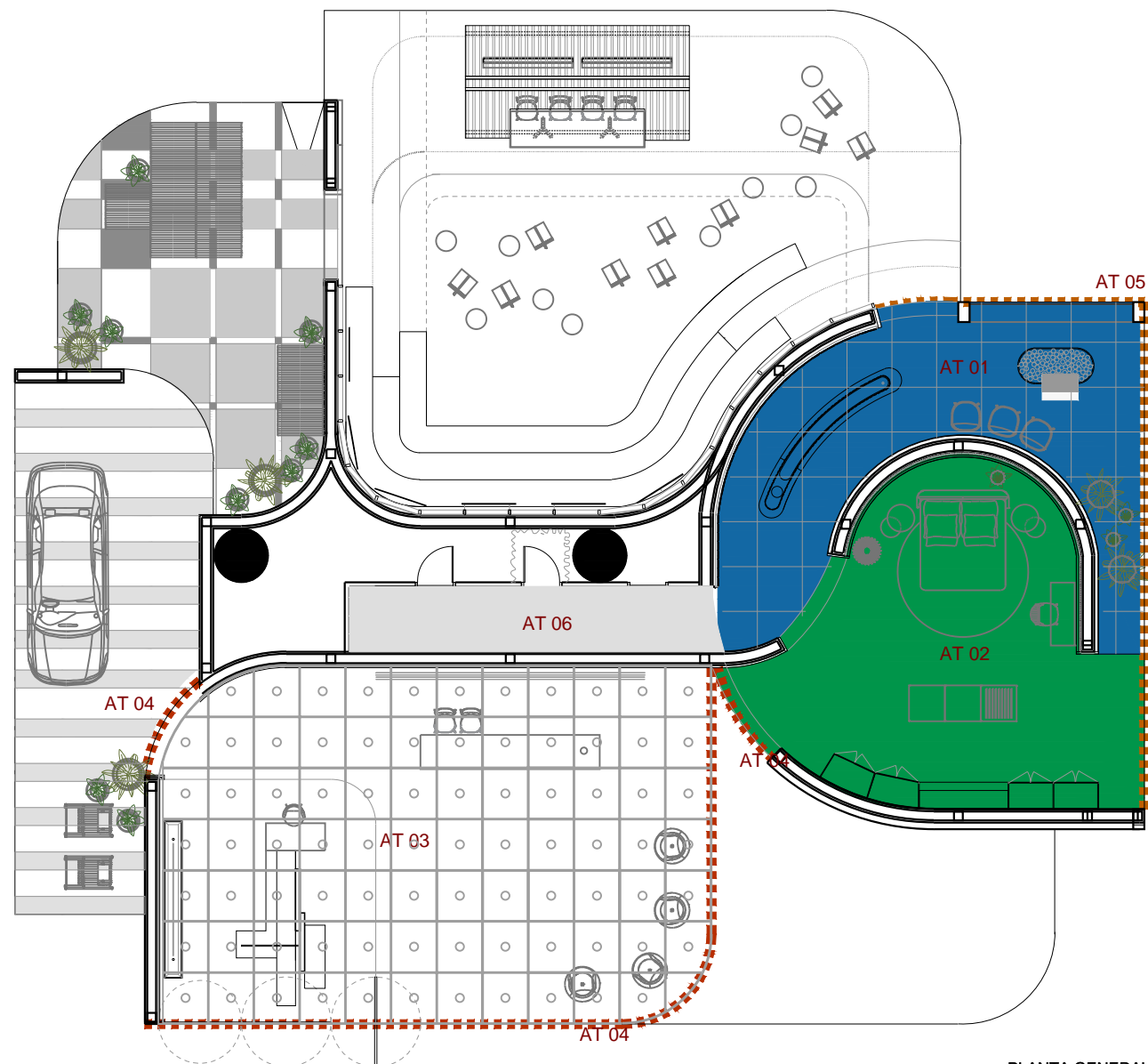
101,95m ²
39,06m ²
26,23m ²
44,7m ²
43,22m ²
132,91m ²
41,55m ²
22,88m ²
6,69m ²
11,81m ²

REVISION TABLE		DATE
REV	MODIFICATION	
REV01		

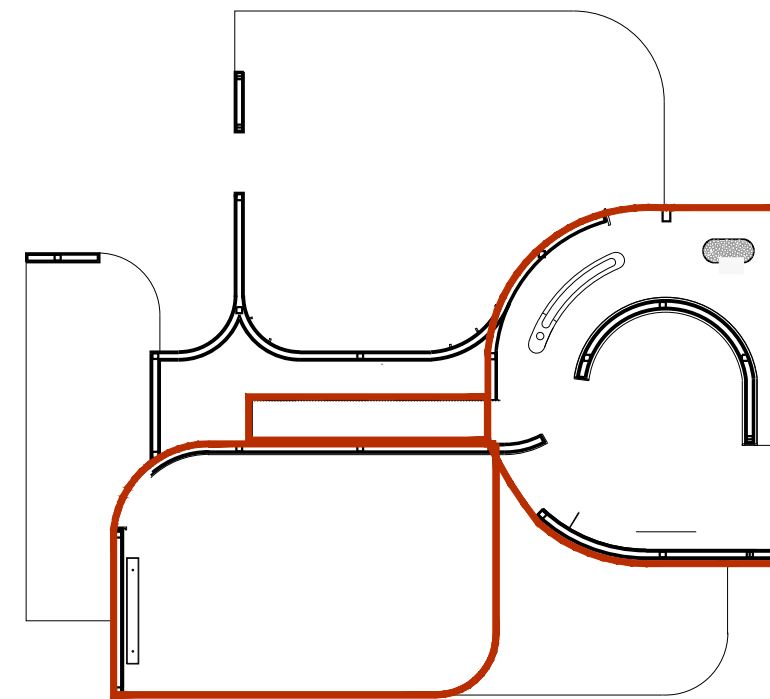
GENERAL NOTES

- Contractor is to submit coordinated shop drawings to designer for approval prior to construction or installation of any item.
- If dimensions are shown that conflict with the above notes, the issue is to be brought to the attention of designer for resolution prior to construction or installation.
- This project only refers to the interior design of the space, without taking into account the local or state regulations. The architect will be responsible for compliance.
- Each element must be installed in relation to the recommendations of the suppliers.
- This project can not be reproduced without previous authorization of EstudiHac.

SPECIFIC NOTES



PLANTA GENERAL | E = 1 : 150



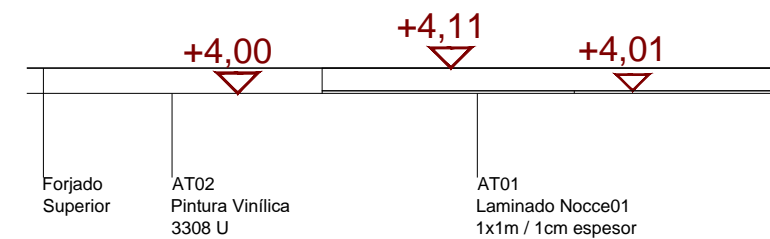
ESQUEMA SUPERFICIE TECHO | E = 1 : 250

LEYENDA

	AT 01	_Techo / Laminado Ref. Nocce 01 / Formato 1x1 / Firma: Alvic /
	AT 02	_Pintura Vinílica Pantone 3308 U
	AT 03	_Techo Laminado / Ref. Como Ash03_Syncron / Formato: 1x1 / Firma: Alvic /
	AT 04	_Canto Techo / Molduras Tintado igual a Laminado Como Ash03_Syncron / AltoTuria /
	AT 05	_Canto Techo / Ref: Laminado Ref. Nocce 01 / Formato 1x1 / Firma: Alvic /
	AT 06	_Pintura PANTONE 5575U

CUADRO DE MEDICIONES

43,22m ²
51,39m ²
101,95m ²
50,82m ²
8,64m ²
11,95m ²



DETALLE ENCUESTRO | E = 1 : 30

PLANTA GENERAL

PLAN Nº: 4609-DD-AC03 REV01

NAME: ACABADOS REVESTIMIENTOS
PLANTA GENERAL

SCALE: 1: 150

DATE: 2019 / 10

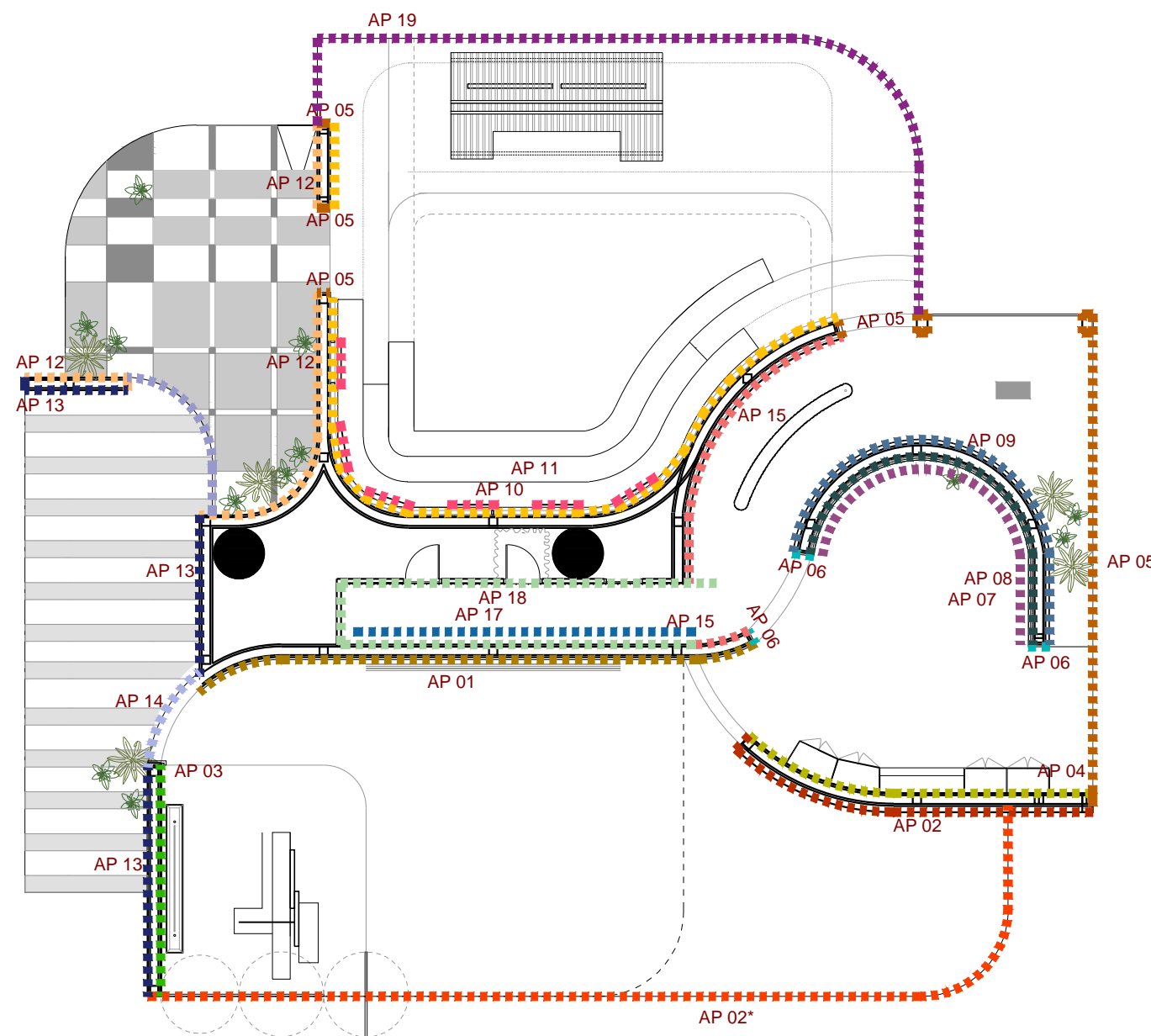
UNITS: meters DIMENSIONS: A 3

REVISION TABLE		DATE
REV	MODIFICATION	
REV01		

GENERAL NOTES

- Contractor is to submit coordinated shop drawings to designer for approval prior to construction or installation of any item.
- If dimensions are shown that conflict with the above notes, the issue is to be brought to the attention of designer for resolution prior to construction or installation.
- This project only refers to the interior design of the space, without taking into account the local or state regulations. The architect will be responsible for compliance.
- Each element must be installed in relation to the recommendations of the suppliers.
- This project can not be reproduced without previous authorization of EstudiHac.

SPECIFIC NOTES



LEYENDA	MEDICIONES	LEYENDA	MEDICIONES
■■■■■ AP 01 _Pared / Ref. Knossos Grey F2289 / Firma: Sonae Arauco	54 m ²	■■■■■ AP 09 _Varios Laminados Azules / Sonae Arauco Pintura trasera warm grey 1 U	44 m ²
■■■■■ AP 02 _Pared / Molduras = Como Ash03_Syncron / Firma: AltoTuria	42 m ²	■■■■■ AP 10 _Pared / Estructura de pino con panel trasero Unique White B4401 / Firma: Sonae Arauco	94m ²
■■■■■ AP 02* _Canto Pared / Laminado Como Ash03_Syncron / Firma: Alvic _Canto Pared / Superior y lateral con molduras ALTOTURIA	2.40m ² 15m ²	■■■■■ AP 11 _Pared / Panel con impresión / A medida / Firma: Bariperfil	-
■■■■■ AP 03 _Pared / K-panel / Efecto Ladrillo Color Terracota / Firma: Krion	21,8m ²	■■■■■ AP 12 _Laminado Urbanstone Chalk F2280 / Firma: Sonae Arauco	56,25
■■■■■ AP 04 _Pared / Laminado Roble Xerea Nature NT 3917 / Firma: Sudesa/	-	■■■■■ AP 13 _Pared / Ref. Manson KI11 / Firma: Bariperfil /	54,18 m ²
■■■■■ AP 05 _Pared / Laminado Ref. NOCCE 01 / A medida / Firma: Alvic /	-	■■■■■ AP 14 _Canto Pared / Ref. Manson KI11 / Firma: Bariperfil /	1 m ²
■■■■■ AP 06 _Revestimiento de Espejo Negro / Firma: Secrisa	-	■■■■■ AP 15 _Pared / Seastone Pale Ref. 2295 / Formato: 1x1 / Sonae Arauco	10 m ²
■■■■■ AP 07 _Revestimiento / Ref. Verde Trópico 8810 - Aleta TH / Firma: Puricelli /	10.35 m ²	■■■■■ AP 17 _Pared / Pintura PANTONE 5575 U	24,68 m ²
■■■■■ AP 08 _Varios Laminados Verdes / Firma: Puricelli	-	■■■■■ AP 18 _Pared / K-Panel M04 / Firma: Krion	21,38 m ²
		■■■■■ AP 19 Canto Suelo / Madera de Roble Natural / Firma: Gabarro	-

Mediciones sin contar desperdicio

PLANTA GENERAL

PLAN Nº: 4609-DD-CA00 REV01

NAME: DISTRIBUCION Y CARPINTERÍA
PLANTA GENERAL

SCALE: 1: 150

DATE: 2019 / 10

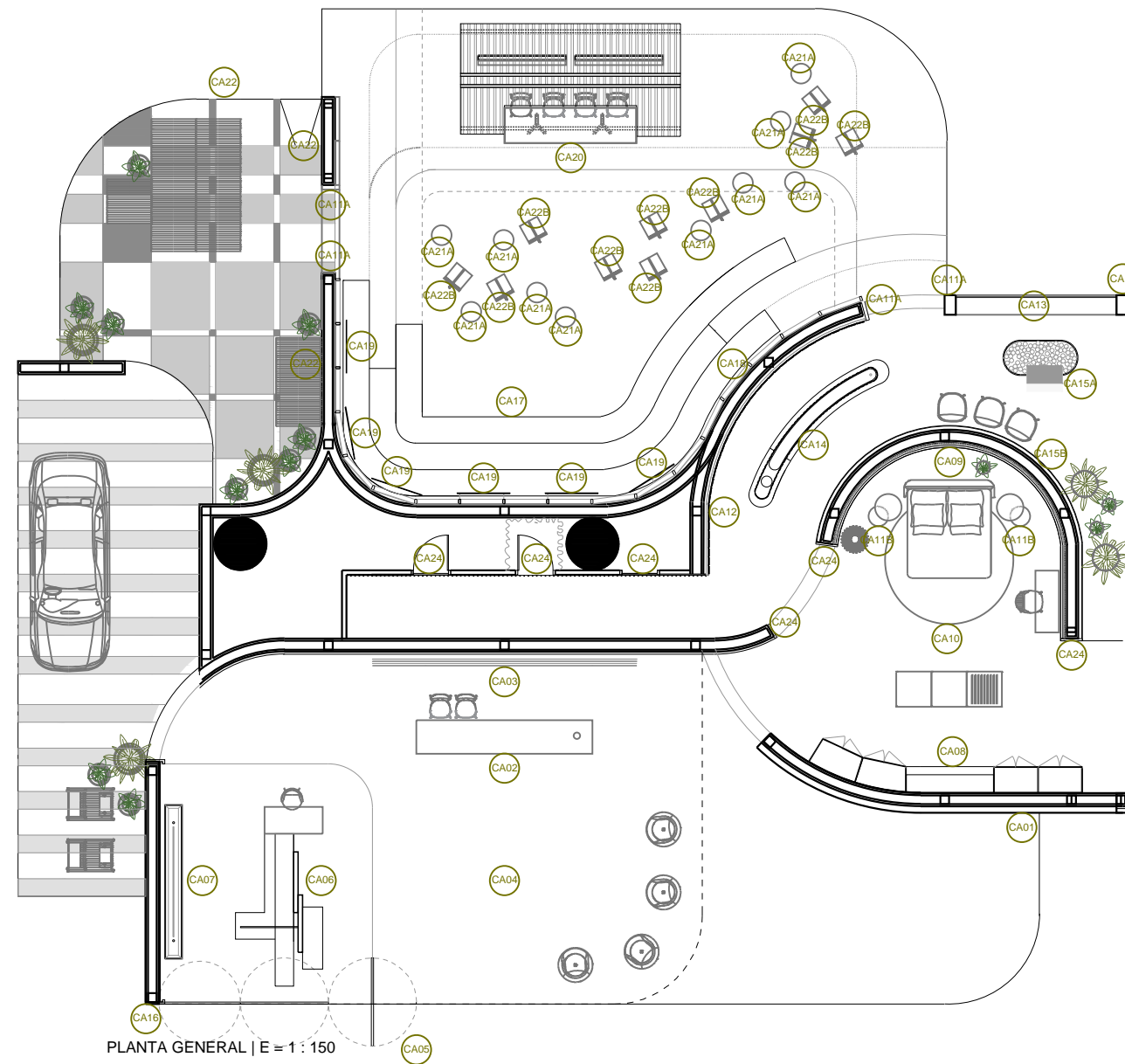
UNITS: meters DIMENSIONS: A 3

REVISION TABLE		DATE
REV	MODIFICATION	
REV01		

GENERAL NOTES

1. Contractor is to submit coordinated shop drawings to designer for approval prior to construction or installation of any item.
2. If dimensions are shown that conflict with the above notes, the issue is to be brought to the attention of designer for resolution prior to construction or installation.
3. This project only refers to the interior design of the space, without taking into account the local or state regulations. The architect will be responsible for compliance.
4. Each element must be installed in relation to the recommendations of the suppliers.
5. This project can not be reproduced without previous authorization of EstudiHac.

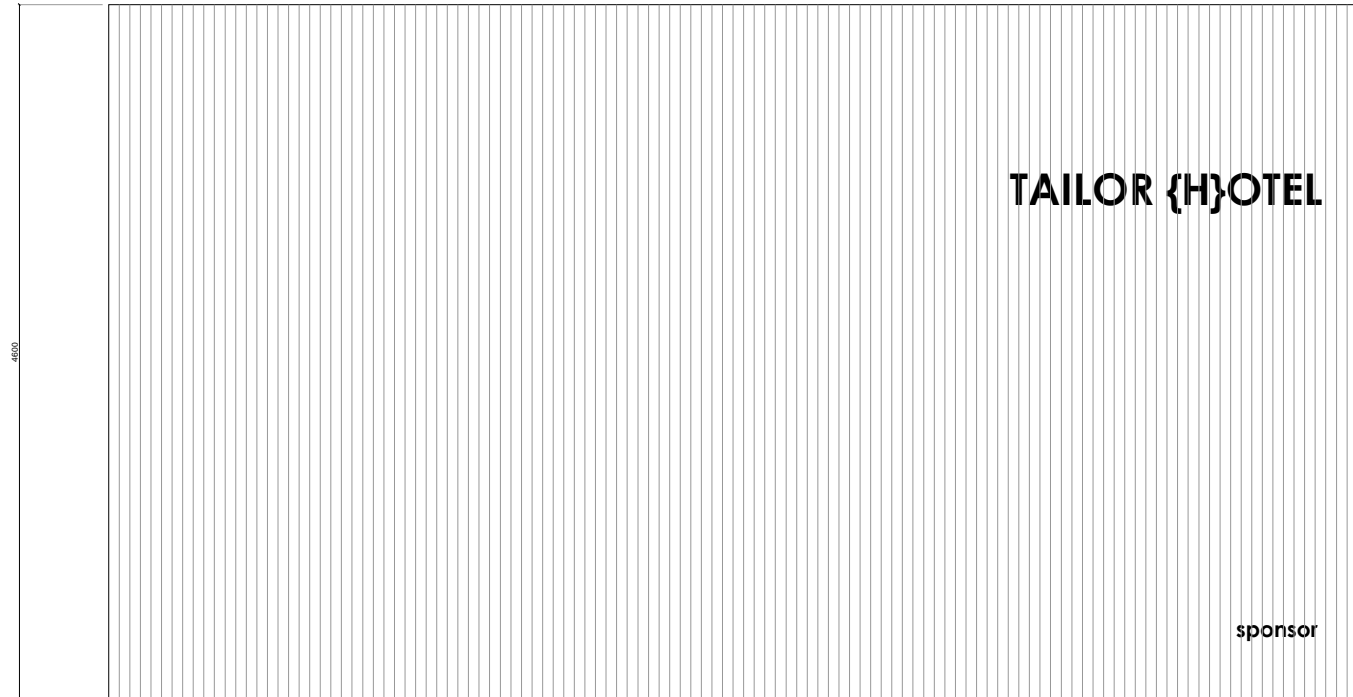
SPECIFIC NOTES



- CA01.- PANELADO EXTERIOR LOBBY.....Ver plano 4609-DD-CA01REV01
- CA02.- MOSTRADOR. LOBBY.....Ver plano 4609-DD-CA02 REV01
- CA03.- MUESTRAS PATRONES. LOBBY.....Ver plano 4609-DD-CA03 REV01
- CA04.- CARPINTERÍA DE TECHOS. LOBBY.....Ver plano 4609-DD-CA04REV01
- CA05.- PUERTAS DE VIDRIO. T-SHOP.....Ver plano 4609-DD-CA05 REV01
- CA06.- EXPOSITOR. T-SHOP.....Ver plano 4609-DD-CA06 REV01
- CA07.- ESTANTERÍA. T-SHOP.....Ver plano 4609-DD-CA07 REV01
- CA08.- ARMARIO. SIUTE ROOM.....Ver plano 4609-DD-CA08
- CA09.- TRAMA CABECERO. SUITE ROOM.....Ver plano 4609-DD-CA09REV01
- CA10.-ALFOMBRA CON DISEÑO ESTUDI{H}AC. SUITE ROOM.....Ver plano 4609-DD-CA10
- CA11A.- REVESTIMIENTO CANTOS. ENTRE ÁREAS.....Ver plano 4609-DD-CA11.A REV01
- CA11B.- MESITAS DE NOCHE. SUITE ROOM.....Ver plano 4609-DD-CA11B
- CA12.- PARED DE ESPEJOS. SPA.....Ver plano 4609-DD-CA12 REV01
- CA13.- ESTANTERÍA. SPAVer plano 4609-DD-CA13

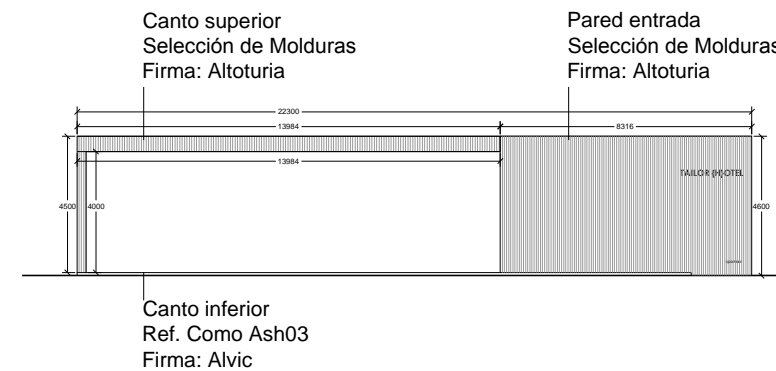
- CA14.- LAVABO. SPA.....Ver plano 4609-DD-CA14.
- CA15A.- CORTINA Y MUEBLE BAÑERA.....Ver plano 4609-DD-CA15A
- CA15B.- CORTINA DEGRADADO. SPA.....Ver plano 4609-DD-CA15B
- CA16.- BARRACA. LOUNGE BAR.....Ver plano 4609-DD-CA16 REV01
- CA17.- GRADAS. LOUNGE BAR.....Ver plano 4609-DD-CA17
- CA18.- PANELADO. LOUNGE BAR.....Ver plano 4609-DD-CA18 REV01
- CA19.- PANELADO COLGADO. LOUNGE BAR.....Ver plano 4609-DD-CA19
- CA20.- MES A MEDIDA. LOUNGE BAR.....Ver plano 4609-DD-CA20 REV01
- CA21.- TABURETES. LOUNGE BAR.....Ver plano 4609-DD-CA21
- CA22.- SUELO TARTÁN. TERRAZAS.....Ver plano 4609-DD-CA22 REV01
- CA23.- LISTONES VERTICALES.....Ver plano 4609-DD-CA23 REV01
- CA24.- CARPINTERÍA PUERTAS. PASILLO.....Ver plano 4609-DD-CA24 REV01
- CA25.- CANTOS ESPEJO. ENTRE ÁREAS.....Ver plano 4609-DD-CA25
- CA26.- REVESTIMIENTO CANTOS. ENTRE ÁREAS.....Ver plano 4609-DD-CA26

CA01 Panelado formado por molduras de ALTOTURIA, tintadas en color igual a laminado Alvic CA-03 COMO ASH 03



Selección de molduras de ALTOTURIA.
Con esta selección y distribución aleatoria se colocarán en la pared.
Importante tener en cuenta que se tinarán del color de la madera ASH03 de ALVIC para conseguir igualar el tono.

Línea de desarrollo en verdadera magnitud



ALZADO DETALLE | e:1:250

Medición

Superficie a revestir 46,44m²

PLANTA GENERAL

PLAN N°: 4609-DD-CA01

NAME: DISTRIBUCION Y CARPINTERÍA
PANELADO EXTERIOR LOBBY

SCALE: 1: 50

DATE: 2019 / 10

UNITS: meters DIMENSIONS: A 3

REVISION TABLE		DATE
REV	MODIFICATION	
REV01		

GENERAL NOTES

- Contractor is to submit coordinated shop drawings to designer for approval prior to construction or installation of any item.
- If dimensions are shown that conflict with the above notes, the issue is to be brought to the attention of designer for resolution prior to construction or installation.
- This project only refers to the interior design of the space, without taking into account the local or state regulations. The architect will be responsible for compliance.
- Each element must be installed in relation to the recommendations of the suppliers.
- This project can not be reproduced without previous authorization of EstudiHac.

SPECIFIC NOTES

**** APLICA A:**
-ALTOTURIA
-ALVIC

PLANTA GENERAL

PLAN Nº: 4609-DD-CA02 REV01

NAME: DISTRIBUCION Y CARPINTERIA MOSTRADOR LOBBY

SCALE: 1: 30

DATE: 2019 / 10

UNITS: meters DIMENSIONS: A 3

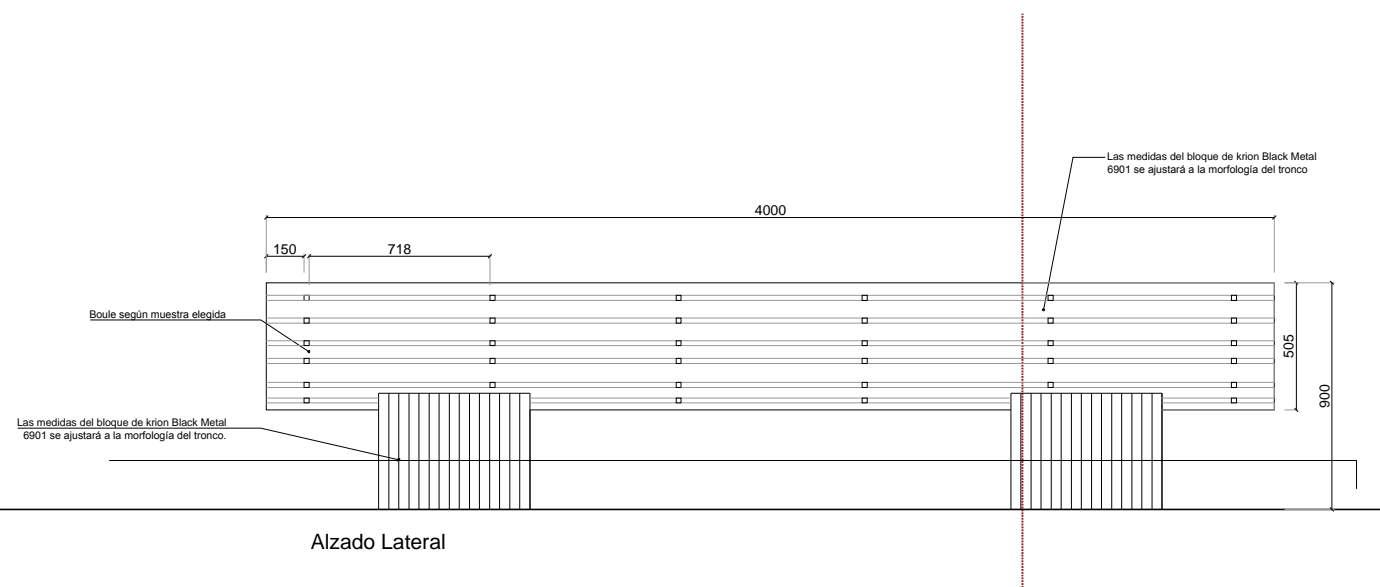
REVISION TABLE		DATE
REV	MODIFICATION	
REV01		

GENERAL NOTES

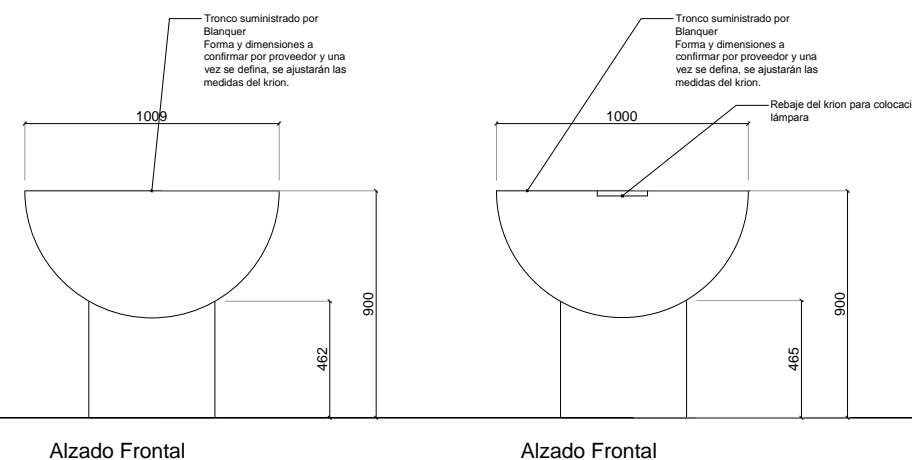
- Contractor is to submit coordinated shop drawings to designer for approval prior to construction or installation of any item.
- If dimensions are shown that conflict with the above notes, the issue is to be brought to the attention of designer for resolution prior to construction or installation.
- This project only refers to the interior design of the space, without taking into account the local or state regulations. The architect will be responsible for compliance.
- Each element must be installed in relation to the recommendations of the suppliers.
- This project can not be reproduced without previous authorization of EstudiHac.

SPECIFIC NOTES

**** APLICA A:**
-BLANQUER
-KRION

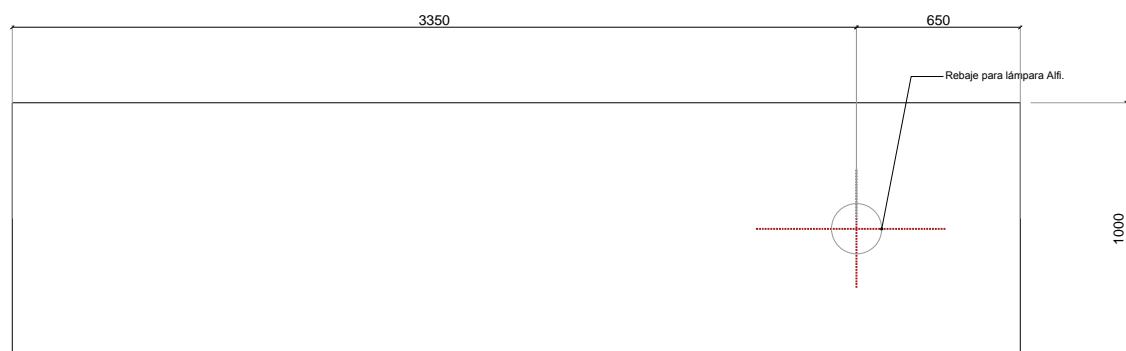


Alzado Lateral

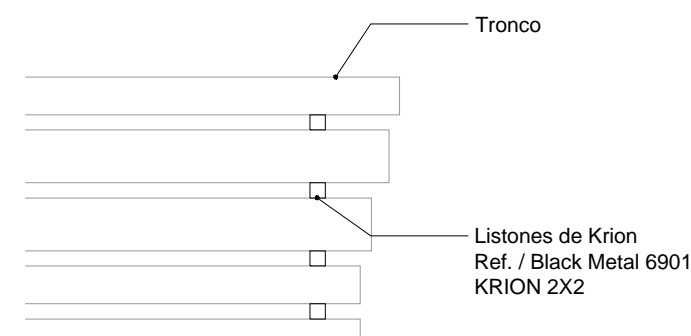


Alzado Frontal

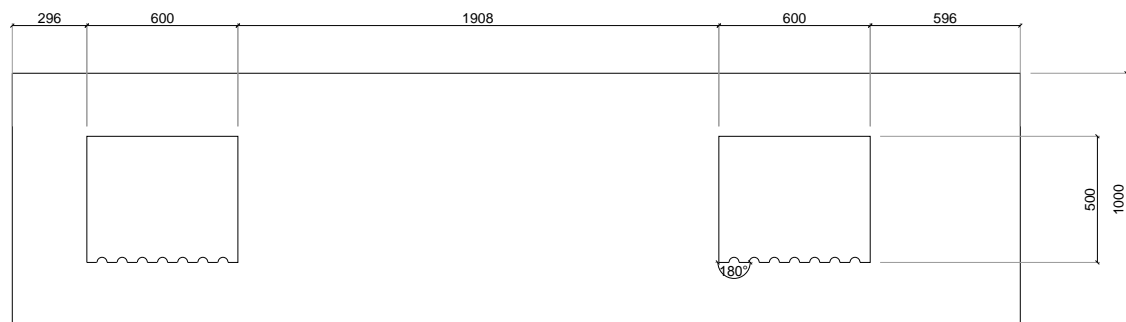
Alzado Frontal



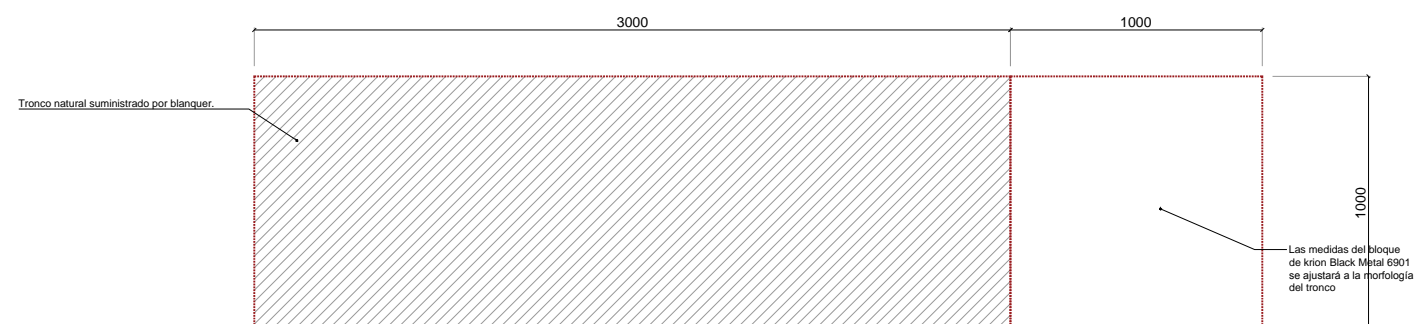
Planta



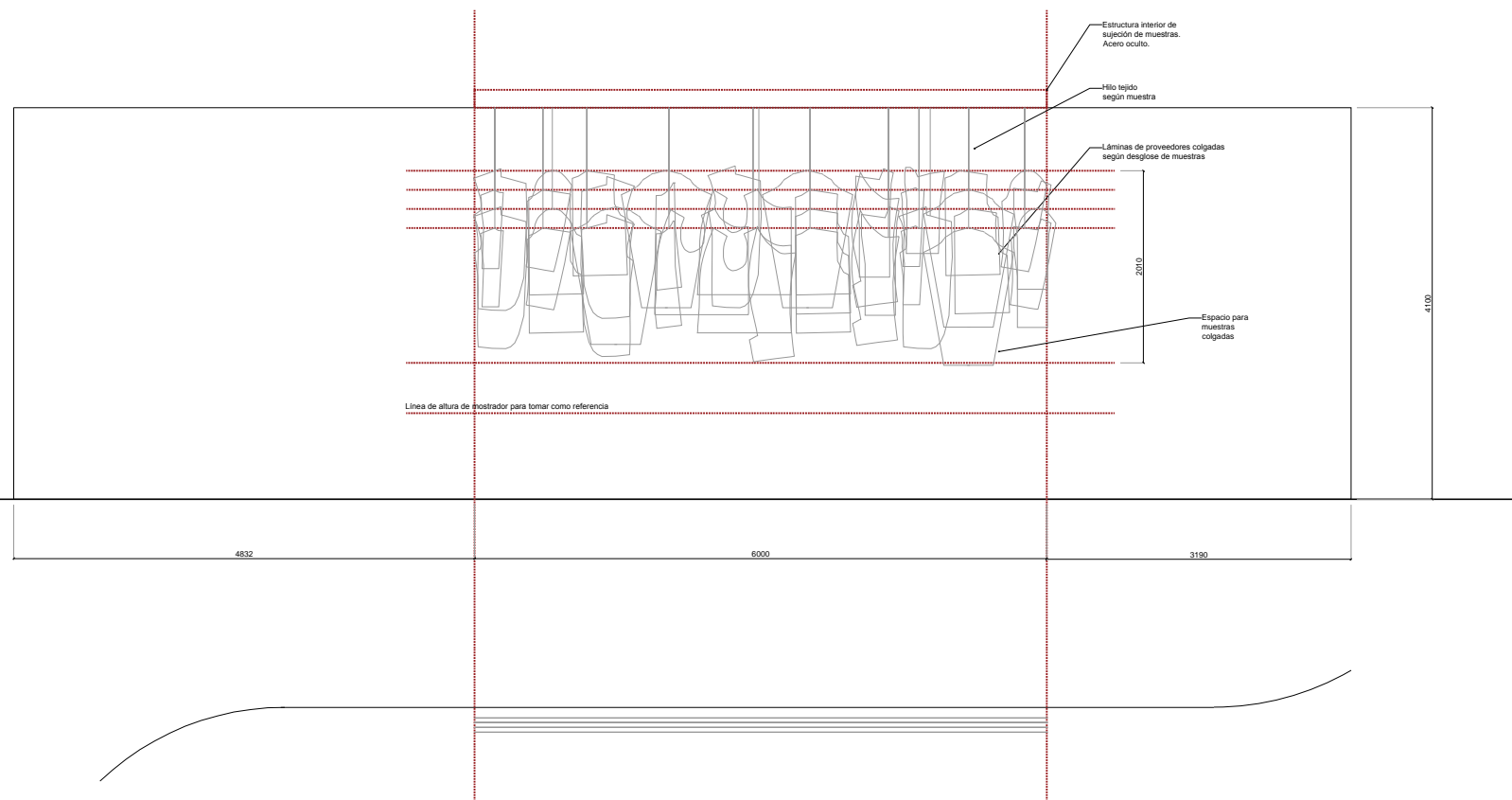
Detalle Boule



Base



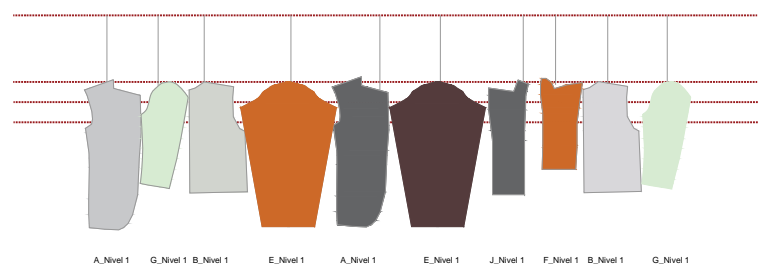
CA02 Mostrador formado por medio tronco natural de Blanquer de dimensiones aproximadas de 3m de 0.9m de diámetro. Terminación del mostrador con Krion, Black Metal 6901 y pies según diseño del mismo material.



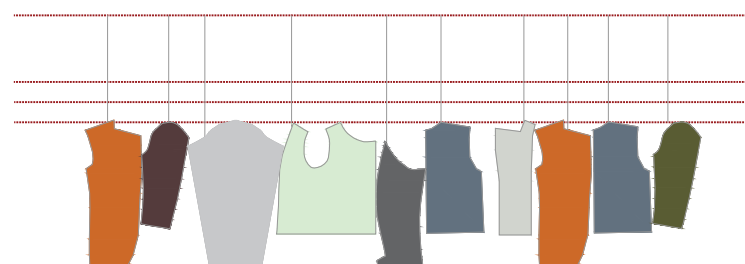
CA03 Muestras de materiales de los proveedores expuestas en formatos irregulares de láminas. Estructura de acero oculta y sujeción de las láminas con hilos a tonos según muestras. Incluye 4 filas.

TOTAL PIEZAS 40 UD.	
Pieza A 6 ud	Pieza B 8 ud
Pieza C 2 ud	Pieza D 4 ud
Pieza E 5 ud	Pieza F 1 ud
Pieza G 4 ud	Pieza H 3 ud
Pieza I 3 ud	Pieza J 3 ud

Materiales (3 VECES REPETIDO MATERIAL)	
PURICELLI 2013 GF GRIGIO CHIARO (4U) 4064 IS VENEZIANO GRIS(4U) 2011 FN GF(4UD)	PURICELLI 8543 SK SALMONE (1 UD) 2025 SK ARANCIO SABA (1 UD) 2201 SK TERRA DI SIENA (1 UD) 8530 GF MOGANO ROSSO (1 UD) 8540 SK ROSSO (1 UD) 8525 SK ROSSO RIBES (1 UD) 8541 LU GOYA (1 UD)
SUDESA 3828 ROBLE ESPADÁN (4UD) 1830 ASTATO (4 UD)	SUDESA 1883 CARAMELO LACA MATE 1LM(1 UD)
SONAE SUPREME WHITE M6320(4 U) CARNICO REF. F6261 STU (4 UD) URBANSTONE GRAPHITE F2282 /CM (4 UD)	SONAE ARAUCO L122 ORANGE (1 UD) L1866 BURNT ORANGE (1 UD)



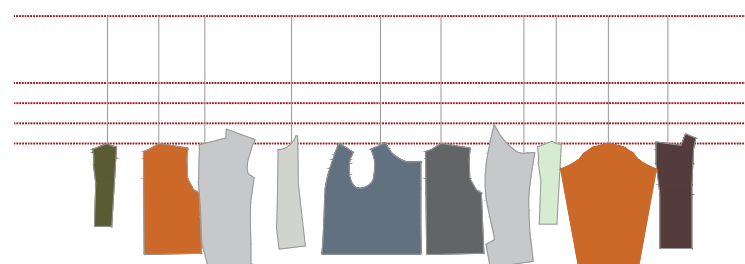
Nivel 1



Nivel 3



Nivel 2



Nivel 4

PLANTA GENERAL

PLAN N°: 4609-DD-CA03 REV01

NAME: DISTRIBUCION Y CARPINTERIA MUESTRAS PATRONES LOBBY

SCALE: 1: 75

DATE: 2019 / 10

UNITS: meters DIMENSIONS: A 3

REVISION TABLE		DATE
REV	MODIFICATION	
REV01		

GENERAL NOTES

- Contractor is to submit coordinated shop drawings to designer for approval prior to construction or installation of any item.
- If dimensions are shown that conflict with the above notes, the issue is to be brought to the attention of designer for resolution prior to construction or installation.
- This project only refers to the interior design of the space, without taking into account the local or state regulations. The architect will be responsible for compliance.
- Each element must be installed in relation to the recommendations of the suppliers.
- This project can not be reproduced without previous authorization of EstudiHac.

SPECIFIC NOTES

** Las muestras serán solo láminas. Sin DM ni aglomerado trasero

APLICA A:
-PURICELLI
-SUDESA
-SONAE

PLANTA GENERAL

PLAN N°: 4609-DD-CA04 REV01

NAME: DISTRIBUCION Y CARPINTERIA
 TECHO LOBBY

SCALE: 1: 50

DATE: 2019 / 10

UNITS: meters DIMENSIONS: A 3

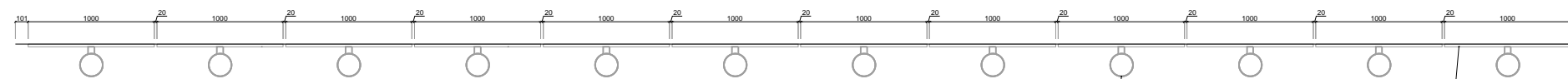
REVISION TABLE		DATE
REV	MODIFICATION	
REV01		

GENERAL NOTES

- Contractor is to submit coordinated shop drawings to designer for approval prior to construction or installation of any item.
- If dimensions are shown that conflict with the above notes, the issue is to be brought to the attention of designer for resolution prior to construction or installation.
- This project only refers to the interior design of the space, without taking into account the local or state regulations. The architect will be responsible for compliance.
- Each element must be installed in relation to the recommendations of the suppliers.
- This project can not be reproduced without previous authorization of EstudiHac.

SPECIFIC NOTES

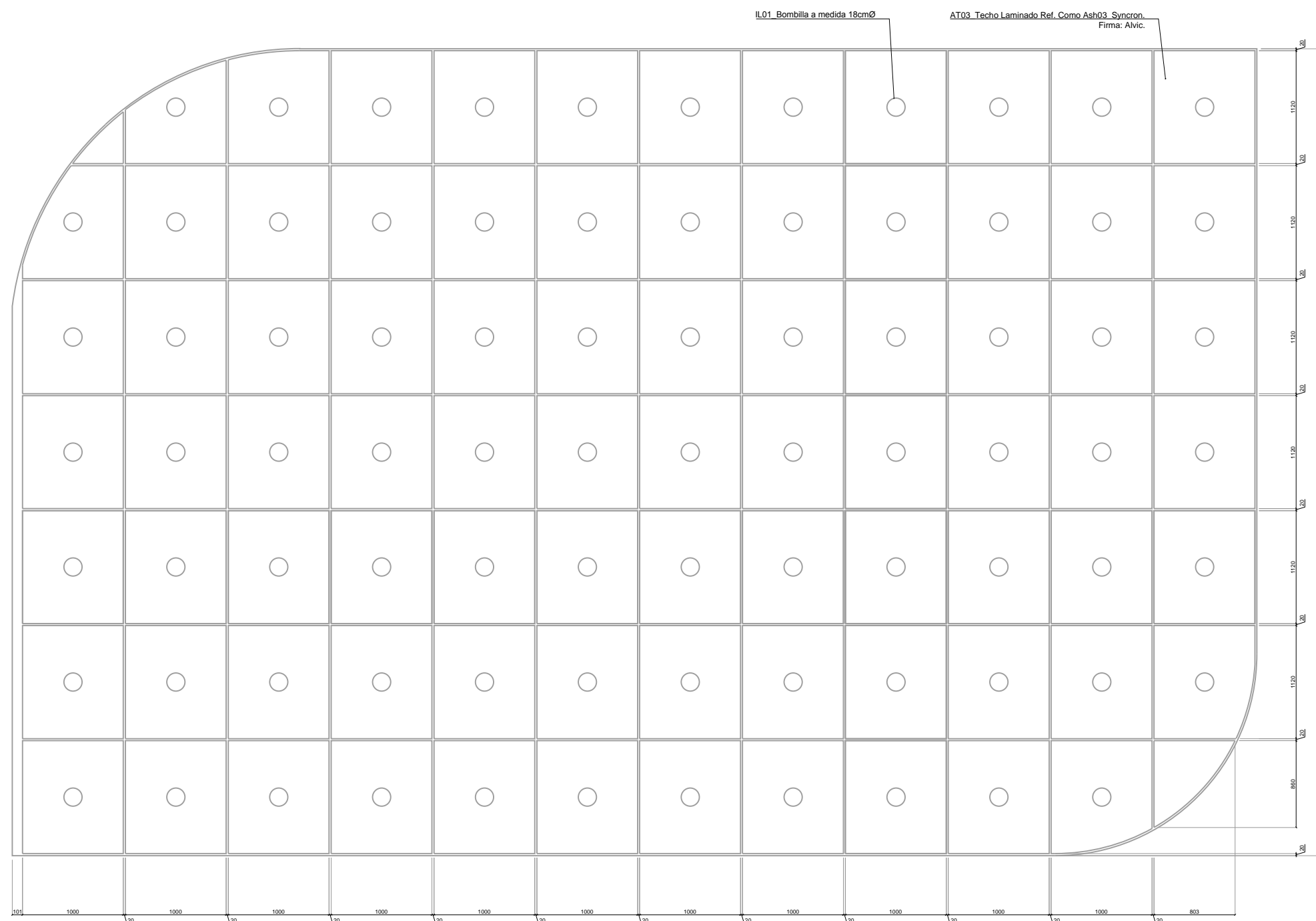
** APLICA A:
 -ALVIC



Alzado Frontal_Carpintería Techos Lobby.
 Tableros de 1x1,20m / 10mm de espesor / Separación de 2cm.
 Bombillas a medida. Portalámparas lacado negro RAL9005 + Bombilla 18cmØ

IL01_Bombilla a medida 18cmØ

AT03_Techo Laminado Ref. Como Ash03_Syncron.
 Firma: Alvic.



Planta_Carpintería Techos Lobby.
 Tableros de 1x1,20m / 10mm de espesor / Separación de 2cm.
 Bombillas a medida. Portalámparas lacado negro RAL9005 + Bombilla 18cmØ

Medición de tableros

106 tableros 1x1 96,13m²

CA05 Carpintería de vidrio con marcos de madera de pino (BLANQUER) tintados en tono nogal igual al laminado Ref. Como Ash03_Syncron. Firma: Alvic de 5x5cm. Herrajes a techo de HAFELE. Vidrio compuesto por Vidrio transparente 5 + 5 laminado con butiral transparente encuentro a hueso con Vidrio laminado de SECRISA Imp 45 + butiral transparente intermedio + vidrio transparente liso interior de 5mm. total 15mm.

Tabla de Perfiles de Pino tintado Tono Nogal

4000x50x50.....	6UDS
2000x50x50.....	6UDS

INTERIOR PROJECT:
FIMMA-MADERALIA 2020
DESIGN DEVELOPMENT

EMPLAZAMIENTO:

PLANTA GENERAL

PLAN N°: 4609-DD-CA05 REV01

NAME: DISTRIBUCION Y CARPINTERÍA
PUERTAS DE VIDRIO T-SHOP

SCALE: 1: 30

DATE: 2019 / 10

UNITS: meters DIMENSIONS: A 3

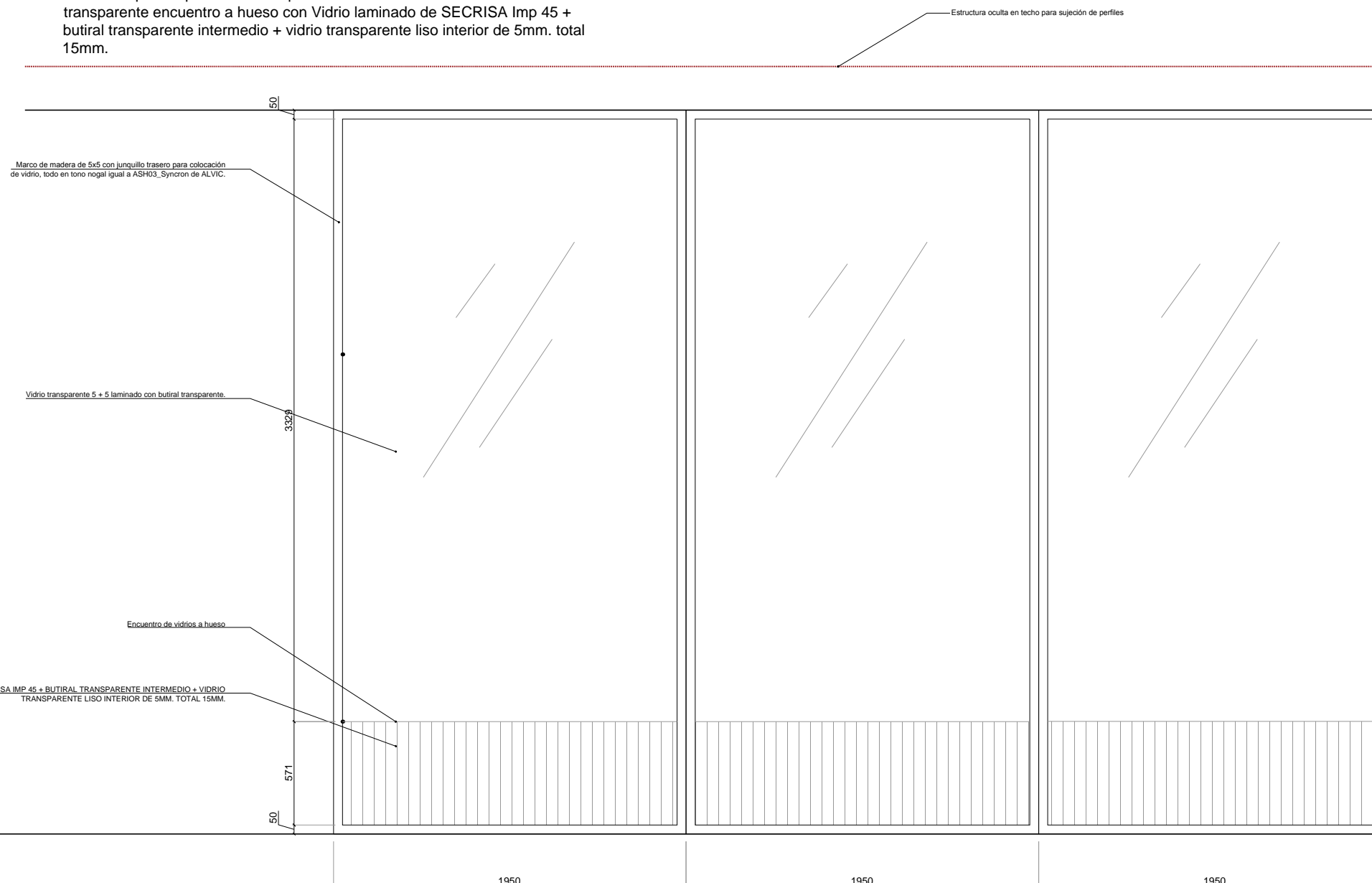
REVISION TABLE		DATE
REV	MODIFICATION	
REV01		

GENERAL NOTES

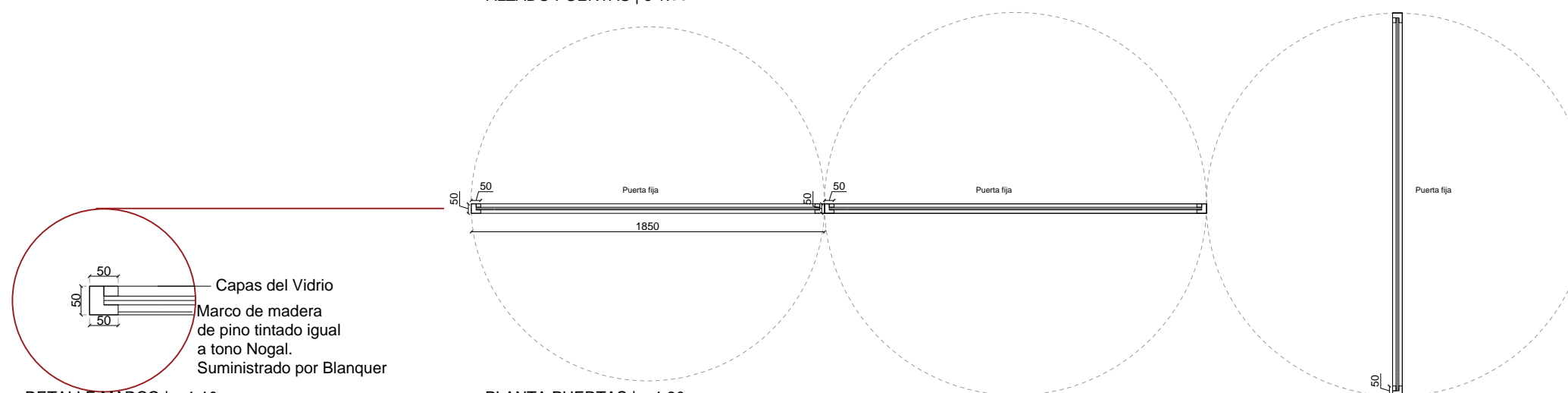
- Contractor is to submit coordinated shop drawings to designer for approval prior to construction or installation of any item.
- If dimensions are shown that conflict with the above notes, the issue is to be brought to the attention of designer for resolution prior to construction or installation.
- This project only refers to the interior design of the space, without taking into account the local or state regulations. The architect will be responsible for compliance.
- Each element must be installed in relation to the recommendations of the suppliers.
- This project can not be reproduced without previous authorization of EstudiHac.

SPECIFIC NOTES

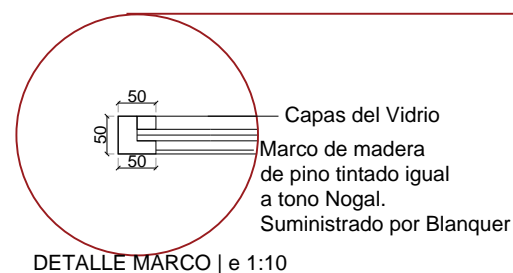
Aplica a:
Montador Blanquer
Secrisa
Hafele



ALZADO PUERTAS | e 1:30



PLANTA PUERTAS | e 1:30



PLANTA GENERAL

PLAN N°: 4609-DD-CA06 H1 DE H2 REV01

NAME: DISTRIBUCION Y CARPINTERIA
EXPOSITOR T-SHOP

SCALE: 1: 50

DATE: 2019 / 10

UNITS: meters DIMENSIONS: A 3

REVISION TABLE		DATE
REV	MODIFICATION	

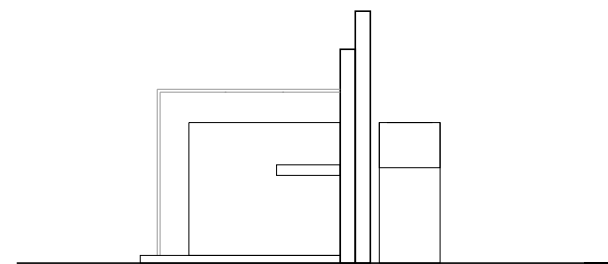
GENERAL NOTES

- Contractor is to submit coordinated shop drawings to designer for approval prior to construction or installation of any item.
- If dimensions are shown that conflict with the above notes, the issue is to be brought to the attention of designer for resolution prior to construction or installation.
- This project only refers to the interior design of the space, without taking into account the local or state regulations. The architect will be responsible for compliance.
- Each element must be installed in relation to the recommendations of the suppliers.
- This project can not be reproduced without previous authorization of EstudiHac.

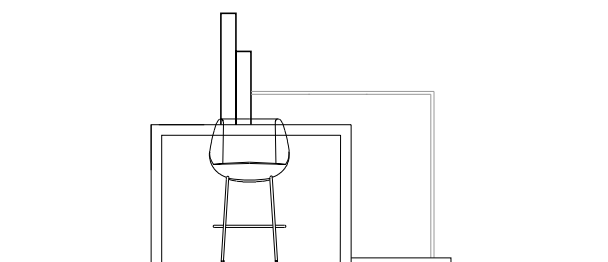
SPECIFIC NOTES

- APLICA A:
- ALVIC
 - PURICELLI
 - KRION
 - SUDESA
 - SECRISA
 - HAFELE
 - SONAE ARAUCO

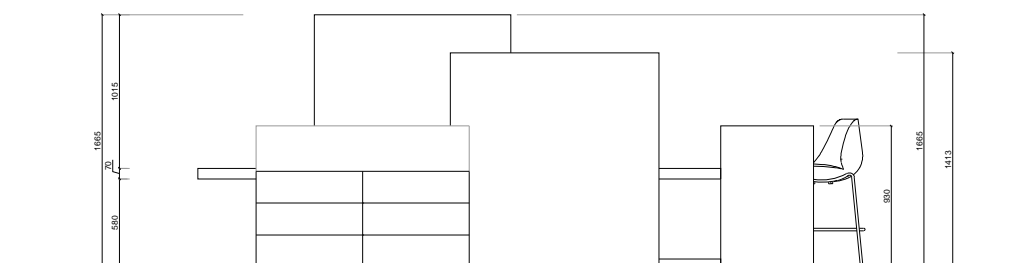
CA06 Expositor del T-Shop



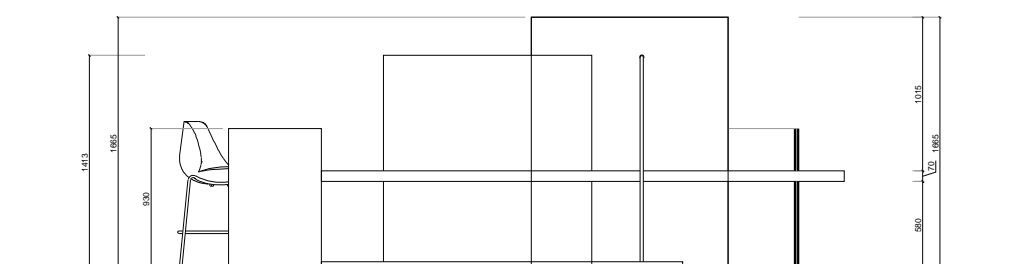
ALZADO FRONTAL | e 1:50



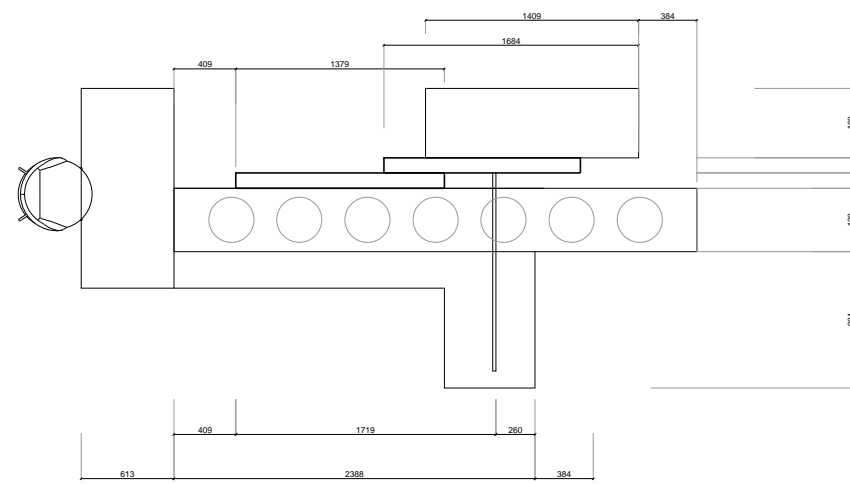
ALZADO TRASERO | e 1:50



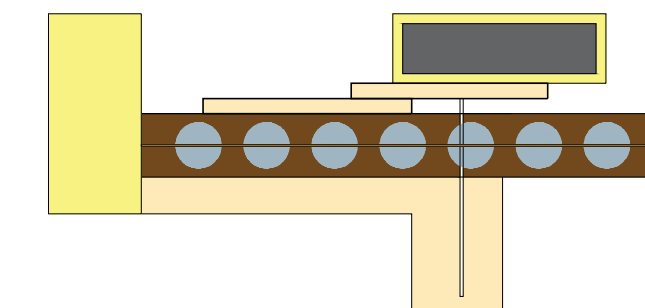
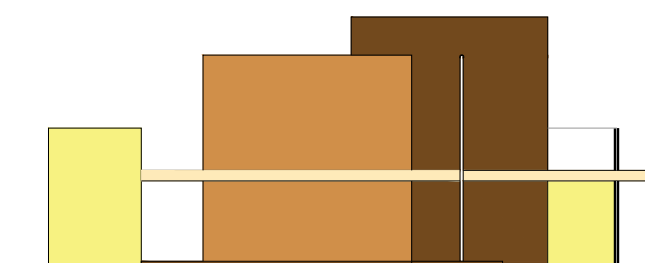
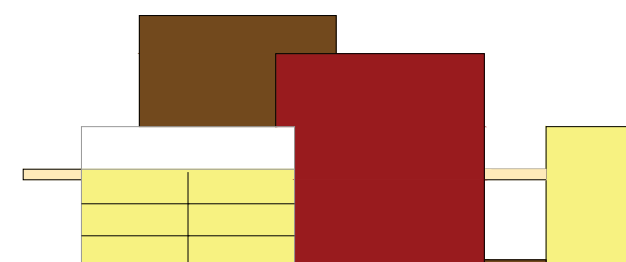
ALZADO LATERAL 01 | e 1:50



ALZADO LATERAL 02 | e 1:50



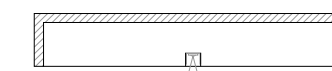
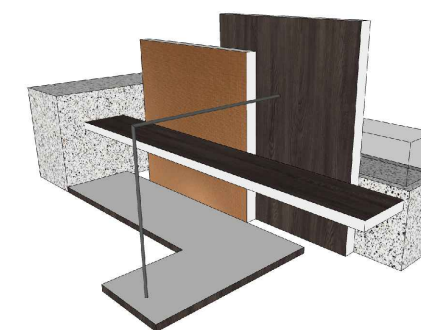
PLANTA | e 1:50



MATERIALES | e 1:50

Medición

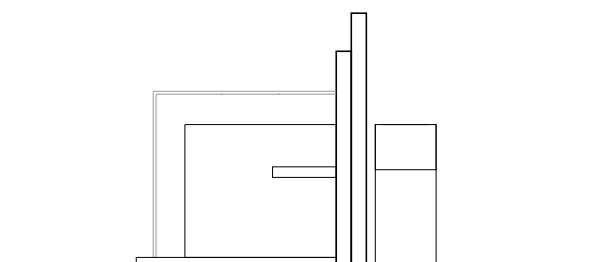
Base 2388*1321.....	1,97m² / 10cm espesor
Murete Pequeño 1379*1413.....	1,94m² / 10cm espesor
Murete Grande 1300*1665.....	2,16m² / 10cm espesor
Tablero canteado de royo 1345*420.....	1,44m² / 10cm espesor



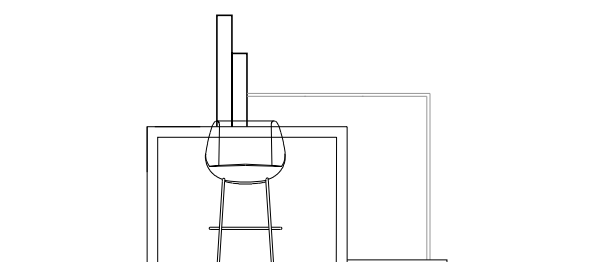
DETALLE LED | e 1:10

- ASH03 SYNCRON / ALVIC
- PURICELLI ART. M001
Fin. GF
- KRION ANTICO BIANCO
T103 G6
- 0001 BLANCO 100 (BICAPA)
CORIUM "CR" / SUDESA
- ESPEJO / SECRISA
- IMAGEN IMPRESA CON
VINILO
- CANTEADOS EN ROLLO /
FROZEN BLUE L5203 /
SONAE ARAUCO
- TIRA DE LUZ LED
T 3000° K

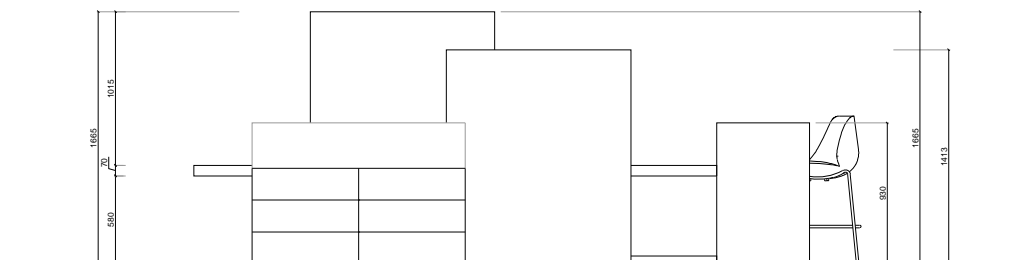
CA06 Expositor del T-Shop



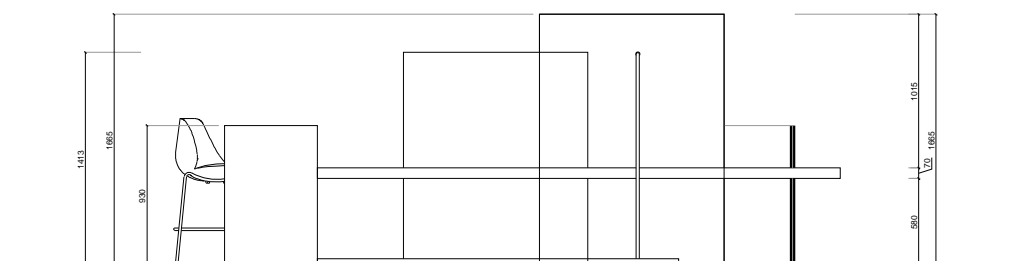
ALZADO FRONTAL | e 1:50



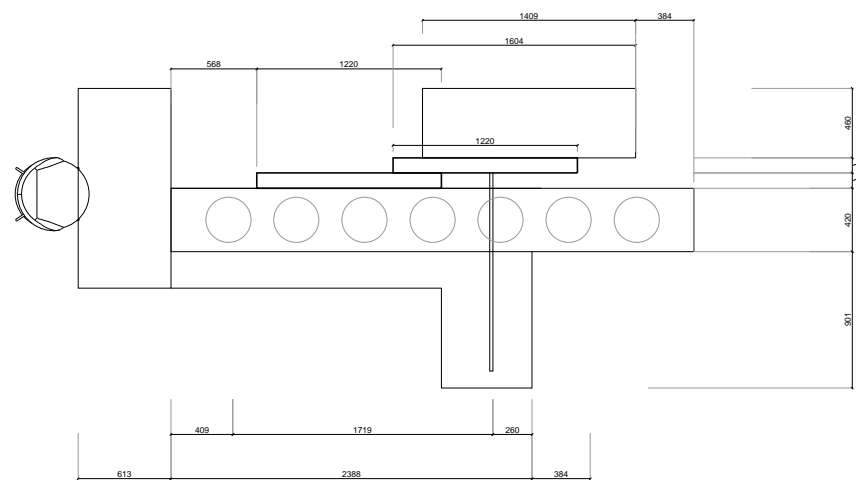
ALZADO TRASERO | e 1:50



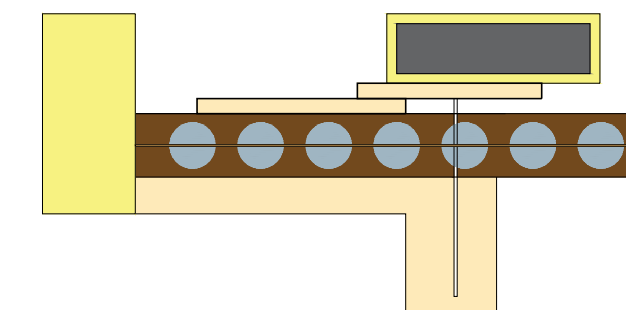
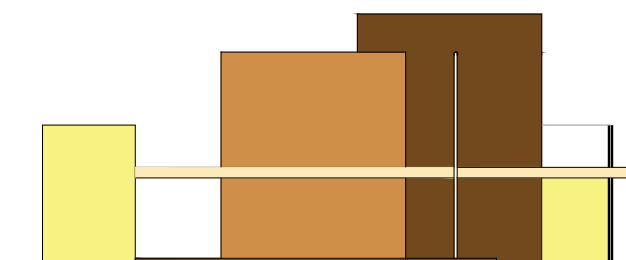
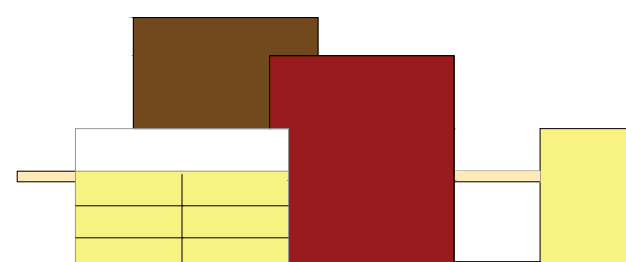
ALZADO LATERAL 01 | e 1:50



ALZADO LATERAL 02 | e 1:50



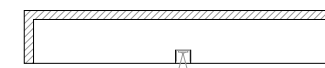
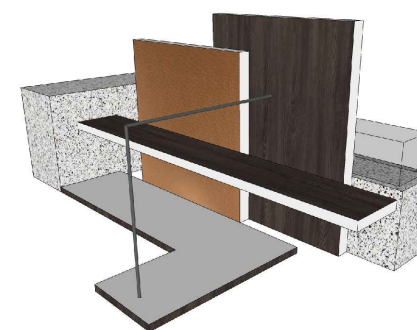
PLANTA | e 1:50



MATERIALES | e 1:50

Medición

Base 2388*1321.....	1,97m ² / 10cm espesor
Murete Pequeño 1379*1413.....	1,94m ² / 10cm espesor
Murete Grande 1300*1665.....	2,16m ² / 10cm espesor
Tablero canteado de royo 1345*420.....	1,44m ² / 10cm espesor



DETALLE LED | e 1:10

- ASH03 SYNCRON / ALVIC
- PURICELLI ART. M001
Fin. GF
- KRION ANTICO BIANCO
T103 G6
- 0001 BLANCO 100 (BICAPA)
CORIUM "CR" / SUDESA
- ESPEJO / SECRISA
- IMAGEN IMPRESA CON
VINILO
- CANTEADOS EN ROLLO /
FROZEN BLUE L5203 /
SONAE ARAUCO
- TIRA DE LUZ LED
T 3000° K

PLANTA GENERAL

REVISION TABLE		DATE
REV	MODIFICATION	

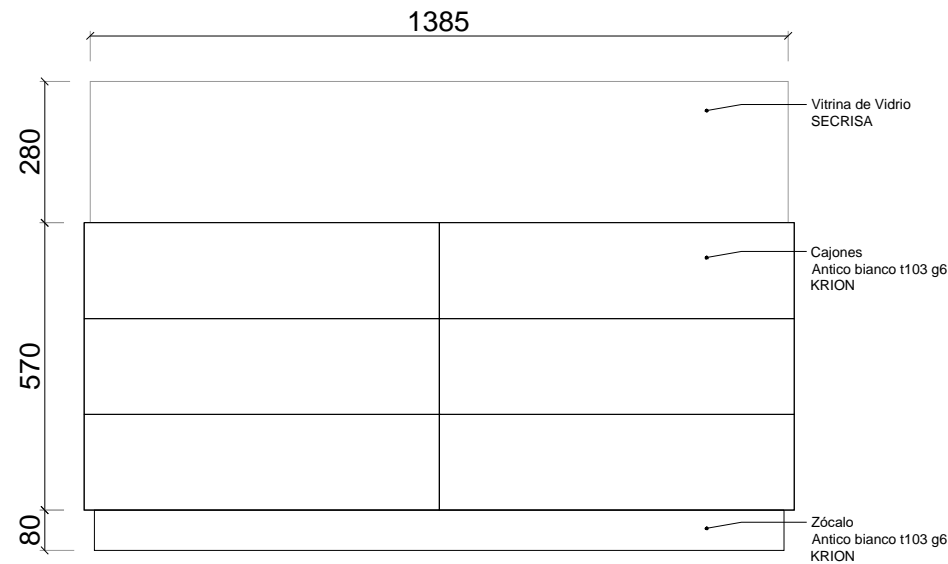
GENERAL NOTES

- Contractor is to submit coordinated shop drawings to designer for approval prior to construction or installation of any item.
- If dimensions are shown that conflict with the above notes, the issue is to be brought to the attention of designer for resolution prior to construction or installation.
- This project only refers to the interior design of the space, without taking into account the local or state regulations. The architect will be responsible for compliance.
- Each element must be installed in relation to the recommendations of the suppliers.
- This project can not be reproduced without previous authorization of EstudiHac.

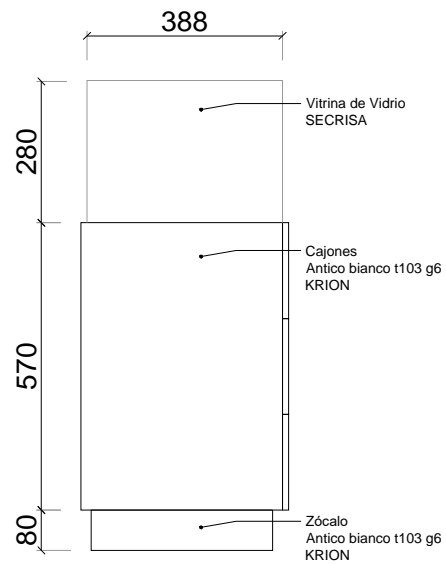
SPECIFIC NOTES

- APLICA A:
- ALVIC
 - PURICELLI
 - KRION
 - SUDESA
 - SECRISA
 - HAFELE
 - SONAE ARAUCO

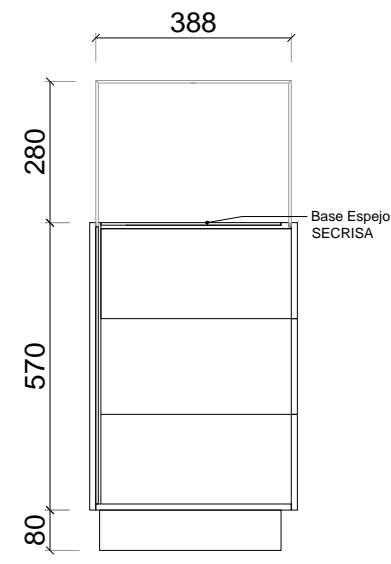
CA06 Detalle Vitrina Expositor del T-Shop en Antico Bianco Firma
KRION. Cajones ocultos de KRION con apertura Ref. Sistema Dialock Firma:
HAFELE.



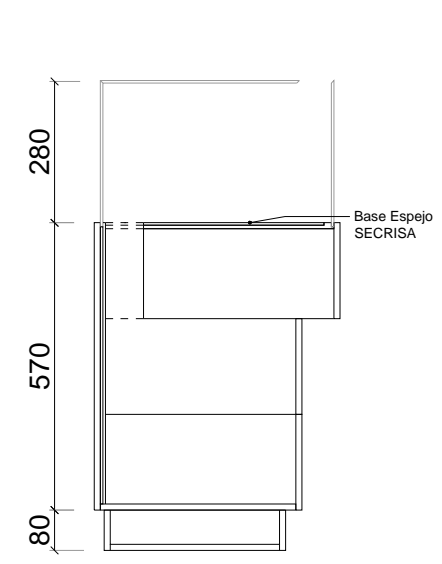
ALZADO FRONTAL | e 1:15



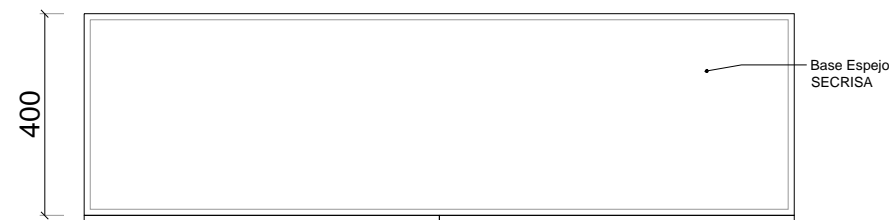
ALZADO LATERAL | e 1:15



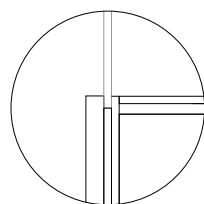
SECCIÓN CAJÓN CERRADO | e 1:15



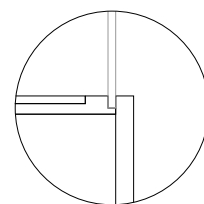
SECCIÓN CAJÓN ABIERTO | e 1:15



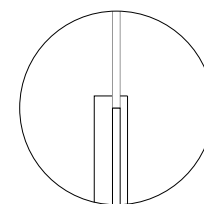
PLANTA | e 1:15



DET.01 | e 1:5
Trasera / Cajón cerrado



DET.02 | e 1:5
Frontal / Cajón cerrado



DET.03 | e 1:5
Trasera / Cajón Abierto

REVISION TABLE		DATE
REV	MODIFICATION	

GENERAL NOTES

- Contractor is to submit coordinated shop drawings to designer for approval prior to construction or installation of any item.
- If dimensions are shown that conflict with the above notes, the issue is to be brought to the attention of designer for resolution prior to construction or installation.
- This project only refers to the interior design of the space, without taking into account the local or state regulations. The architect will be responsible for compliance.
- Each element must be installed in relation to the recommendations of the suppliers.
- This project can not be reproduced without previous authorization of EstudiHac.

SPECIFIC NOTES

APLICA A:
-KRION
-SECRISA
-HAFELE

PLANTA GENERAL

PLAN N°: 4609-DD-CA07 REV01

NAME: DISTRIBUCION Y CARPINTERIA
ESTANTERIAS T-SHOP

SCALE: 1: 50

DATE: 2019 / 10

UNITS: meters

DIMENSIONS: A 3

REVISION TABLE

DATE

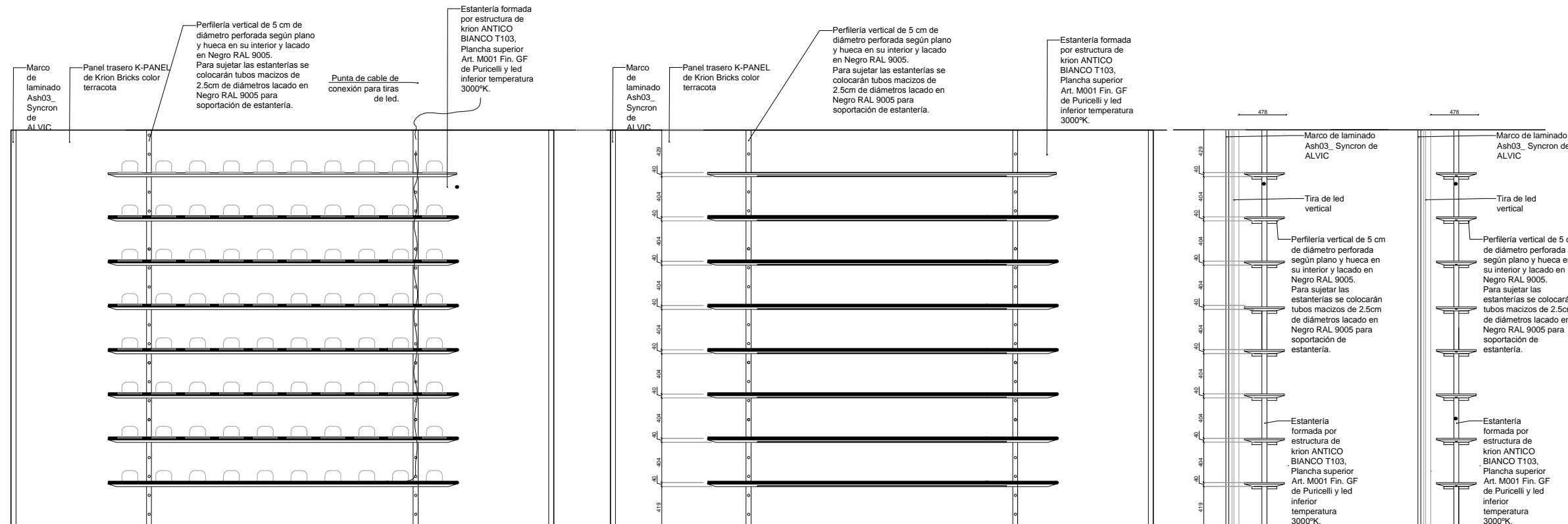
REV	MODIFICATION	DATE
REV01		

GENERAL NOTES

- Contractor is to submit coordinated shop drawings to designer for approval prior to construction or installation of any item.
- If dimensions are shown that conflict with the above notes, the issue is to be brought to the attention of designer for resolution prior to construction or installation.
- This project only refers to the interior design of the space, without taking into account the local or state regulations. The architect will be responsible for compliance.
- Each element must be installed in relation to the recommendations of the suppliers.
- This project can not be reproduced without previous authorization of EstudiHac.

SPECIFIC NOTES

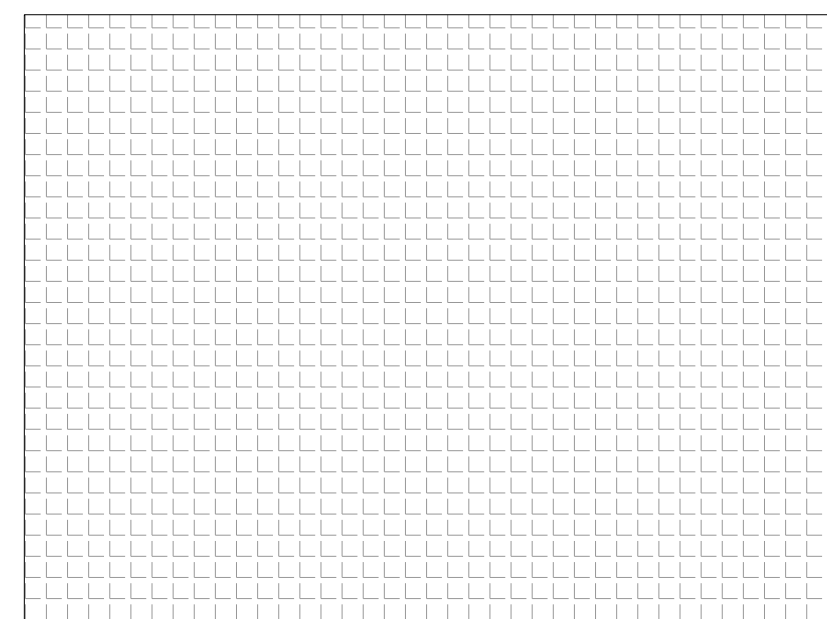
- ** APLICA A:
- PURICELLI
 - ALVIC
 - KRION
 - HAFELE



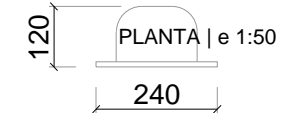
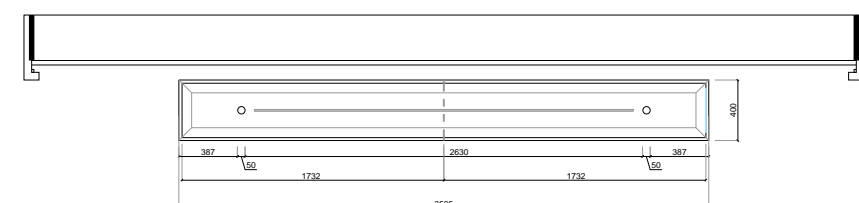
ALZADO FRONTAL | e 1:50

ALZADO FRONTAL | e 1:50

ALZADO LATERAL | e 1:75



K-PANEL M5 | e 1:50

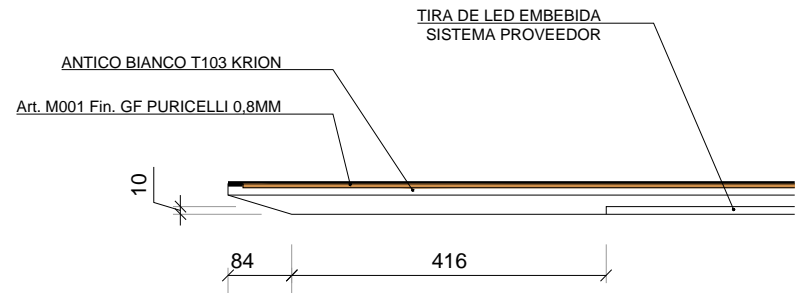


Detalle Sombrero e:1/15_80uds

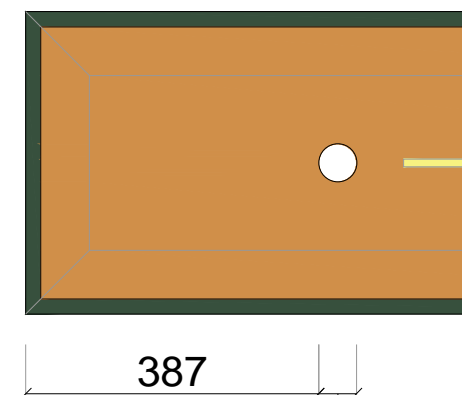
CA07 Estantería formada por montantes metálicos perforados de 5cmØ y baldas de de KRION Antico bianco T103, Plancha superior Art. M001 Fin. GF de PURICELLI y led inferior temperatura 3000°K. Perfilera de sujeción de HAFELE.

Medición

Baldas (x8ud)	1,24m² / 0,8mm espesor
TOTAL:	9,42m² / 0,8mm espesor



DETALLE | e 1:10



DETALLE | e 1:10

- PURICELLI ART. M001 Fin. GF
- KRION ANTICO BIANCO T103 G6
- TIRA DE LUZ LED TEMPERATURA 3000°K

PLANTA GENERAL

PLAN Nº: 4609-DD-CA08

NAME: DISTRIBUCION Y CARPINTERÍA
ARMARIO SUITE ROOM

SCALE: 1: 50

DATE: 2019 / 10

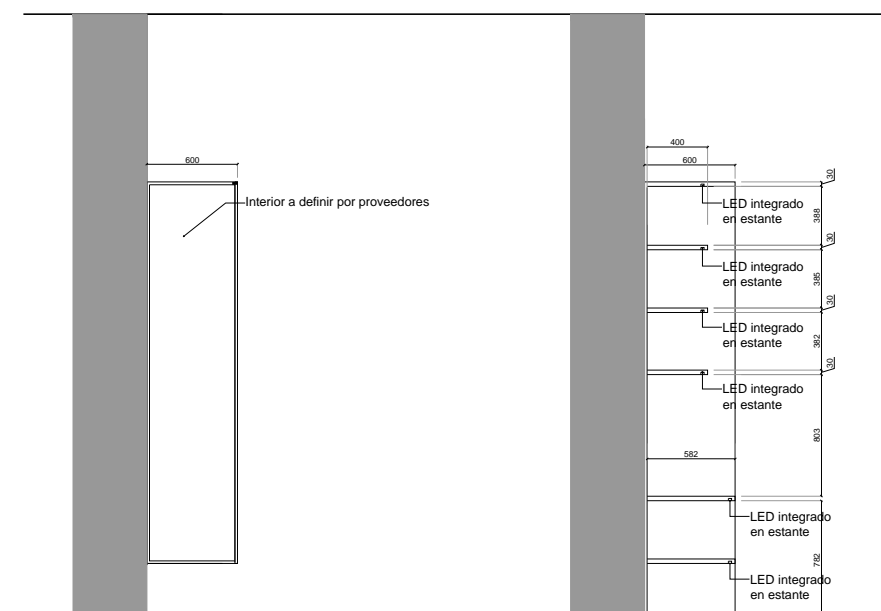
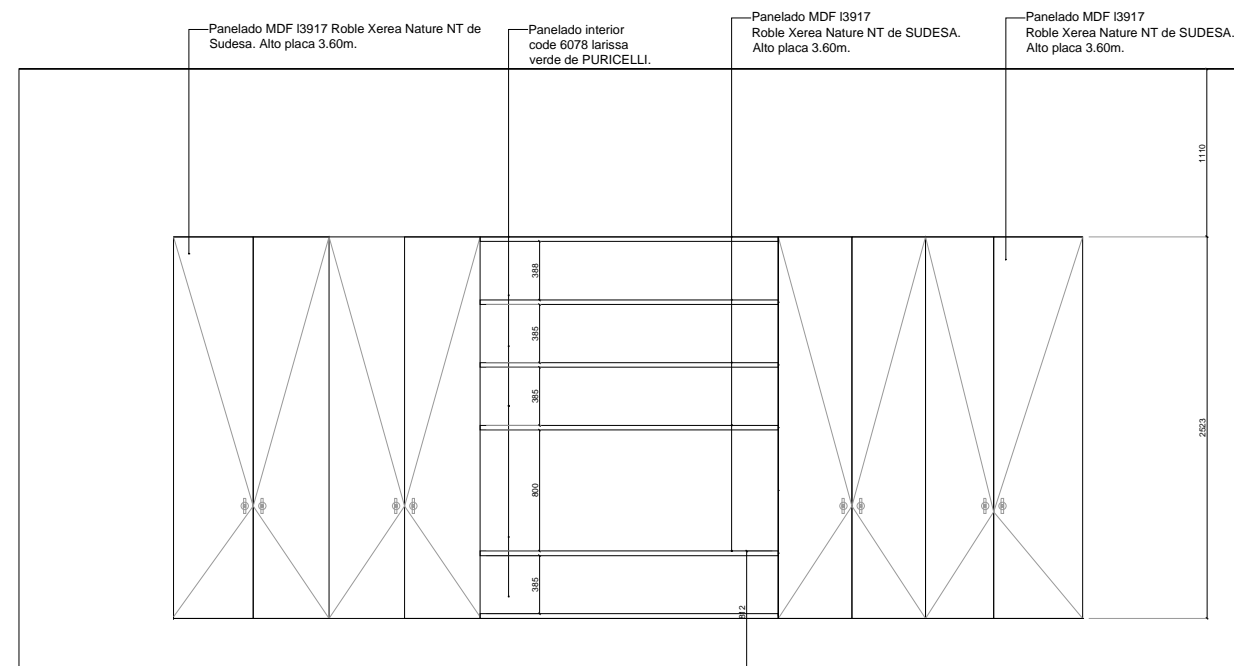
UNITS: meters DIMENSIONS: A 3

REVISION TABLE		DATE
REV	MODIFICATION	

GENERAL NOTES

- Contractor is to submit coordinated shop drawings to designer for approval prior to construction or installation of any item.
- If dimensions are shown that conflict with the above notes, the issue is to be brought to the attention of designer for resolution prior to construction or installation.
- This project only refers to the interior design of the space, without taking into account the local or state regulations. The architect will be responsible for compliance.
- Each element must be installed in relation to the recommendations of the suppliers.
- This project can not be reproduced without previous authorization of EstudiHac.

SPECIFIC NOTES

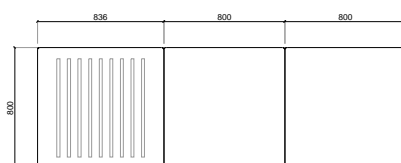
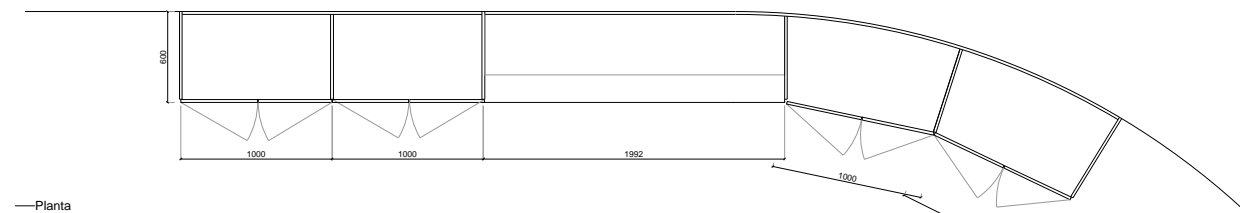


—Alzado

—Sección interior alzado

—Sección interior mesa

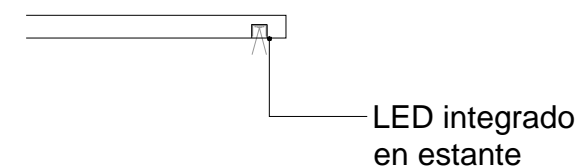
—Línea de desarrollo en verdadera magnitud



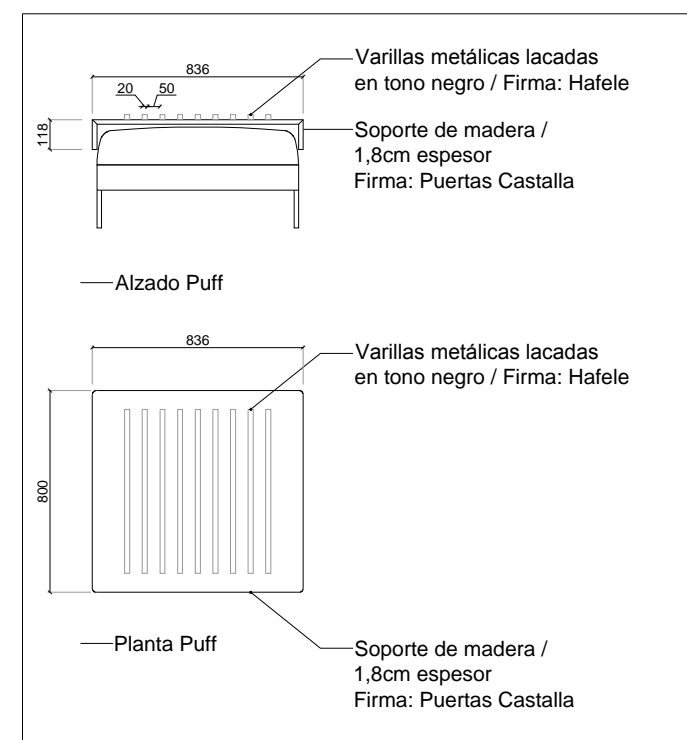
CA08 Armario de estructura MDF I3917 Roble Xerea Nature NT de SUDESA. Alto placa 3.60m. Con escritorio y panelado interior revestido de code 6078 Iarissa verde de PURICELLI con tiras de LED embebidas de temperatura 3000°K.
Herrajes de HAFELE.
Montaje de armario y corte de piezas de PUERTAS CASTALLA.
MO05 Pouf Hardy. Firma: Blasco&Vila. Añadido de un tablero de madera de 1,8cm/espesor con varillas metálicas suministradas por HAFELE y montado por PUERTAS CASTALLA

Medición (Total superficies)

Puertas 50*2500	8uds	11,26m ² / 1,8cm espesor
Traveseras 600*2500	6uds	1,40m ² / 1,8cm espesor
Trasera		7,10m ² / 1,8cm espesor
Base		2,58m ² / 1,8cm espesor
Estanterías 600*2000	3ud	1,13m ² / 3cm espesor
Estanterías 400*2000	3ud	0,79m ² / 3cm espesor



* Detalle 01 | e1:10



—Detalle Pouf e 1:30

PLANTA GENERAL

PLAN N°: 4609-DD-CA09 REV01

NAME: DISTRIBUCION Y CARPINTERÍA
PARED CABECERO SUITE ROOM

SCALE: 1: 50

DATE: 2019 / 10

UNITS: meters DIMENSIONS: A 3

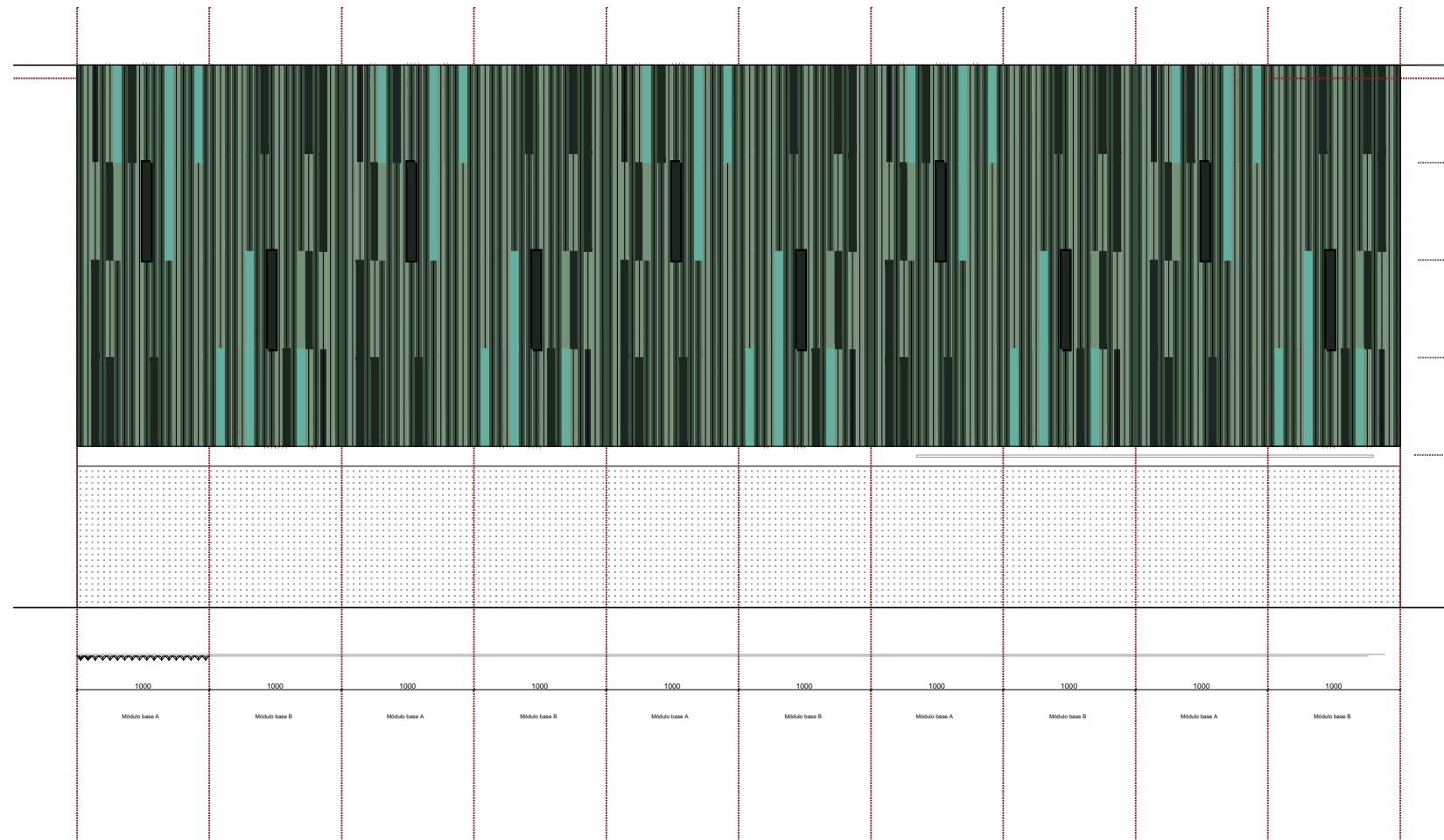
REVISION TABLE		DATE
REV	MODIFICATION	
REV01		

GENERAL NOTES

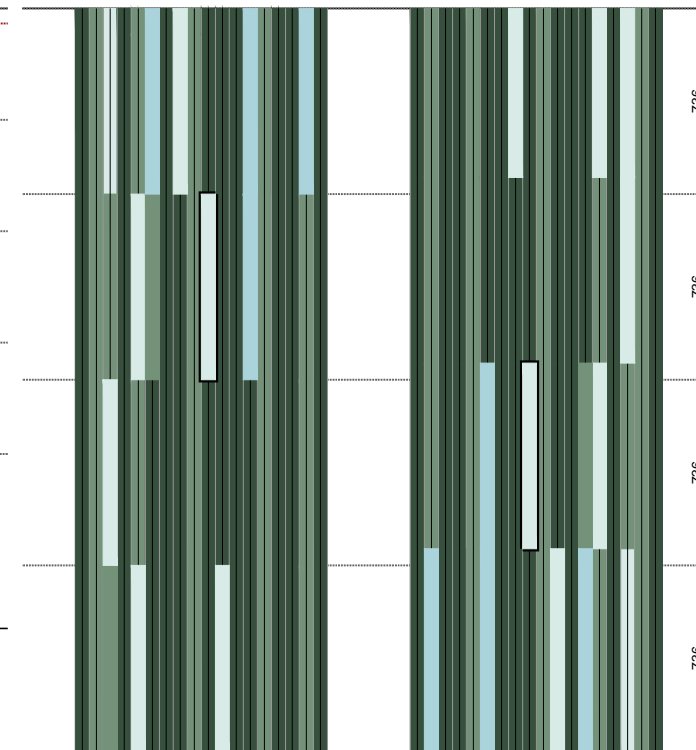
- Contractor is to submit coordinated shop drawings to designer for approval prior to construction or installation of any item.
- If dimensions are shown that conflict with the above notes, the issue is to be brought to the attention of designer for resolution prior to construction or installation.
- This project only refers to the interior design of the space, without taking into account the local or state regulations. The architect will be responsible for compliance.
- Each element must be installed in relation to the recommendations of the suppliers.
- This project can not be reproduced without previous authorization of EstudiHac.

SPECIFIC NOTES

- ** APLICA A:**
-PURICELLI
-SUDESA
-KRION



ALZADO FRONTAL | e 1:50

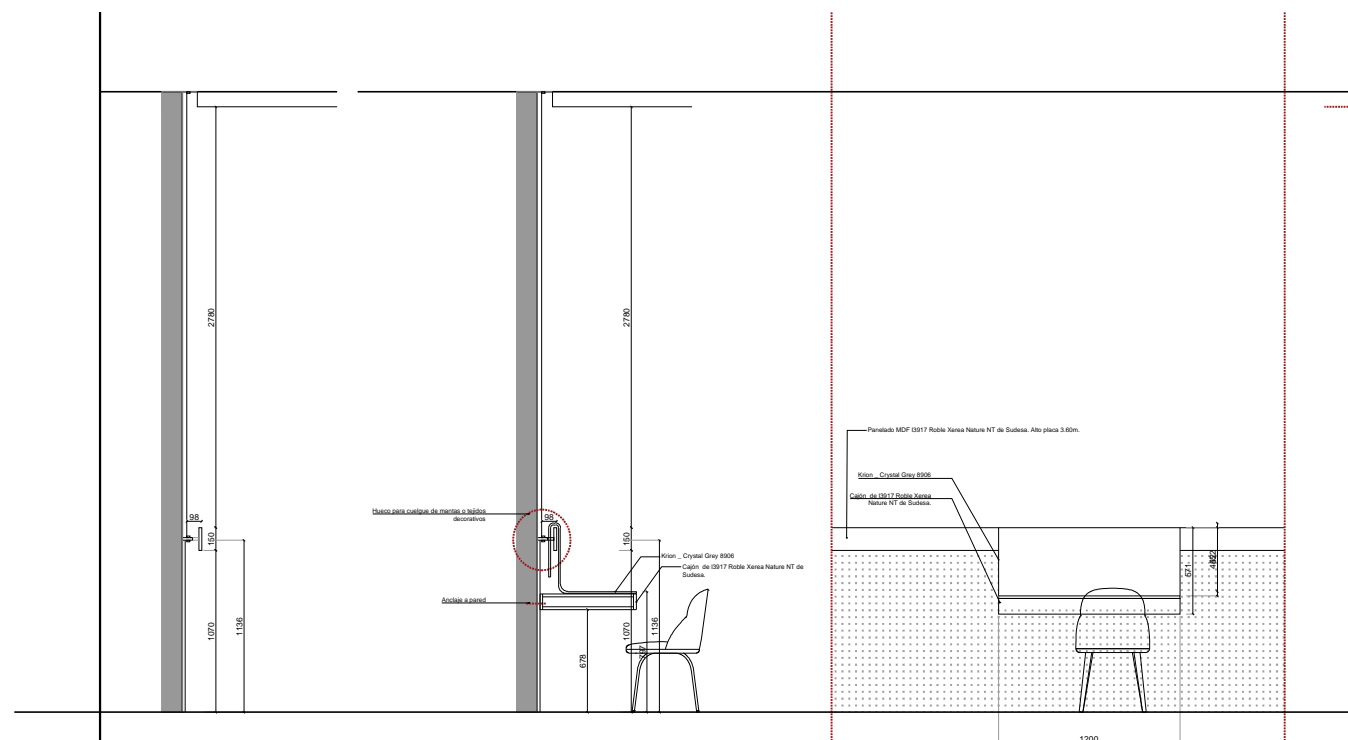


TRAMA | e 1:30

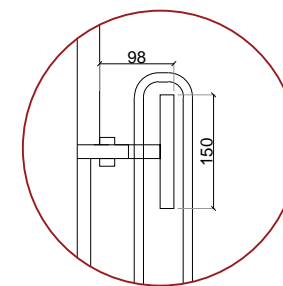
- PURICELLI ART. 8810
Fin. NC
- PURICELLI ART. 2010
Fin. SK
- PURICELLI ART. 2023
Fin. AR
- PURICELLI ART. 2023 Fin.
LU

CA09 Alistonado de madera. Alto placa 3.60m, de base triangular en distintos laminados con efecto degradado de la firma PURICELLI.
Friso MDF 13917 Roble Xerea Nature NT de SUDESA
Mesa de escritorio a medida Ref. Cristal Grey 8906 de KRION

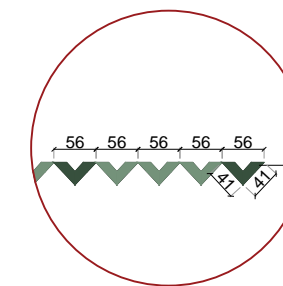
Medición
Listones Base Triangular ▲ 720uds Paramento: 28,8m²



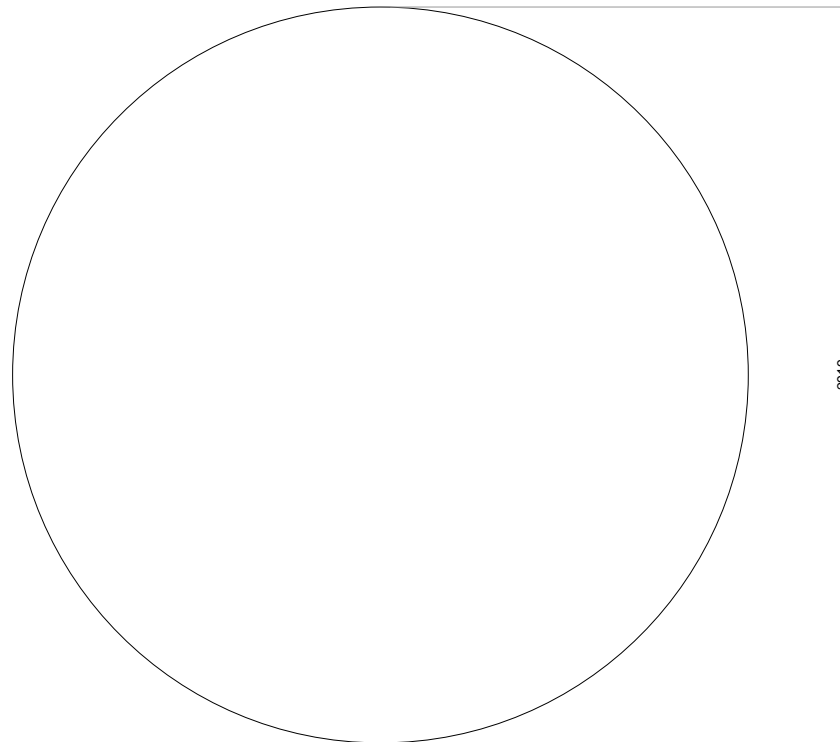
DETALLE MESA | e 1:50



DETALLE TOALLERO | e 1:10

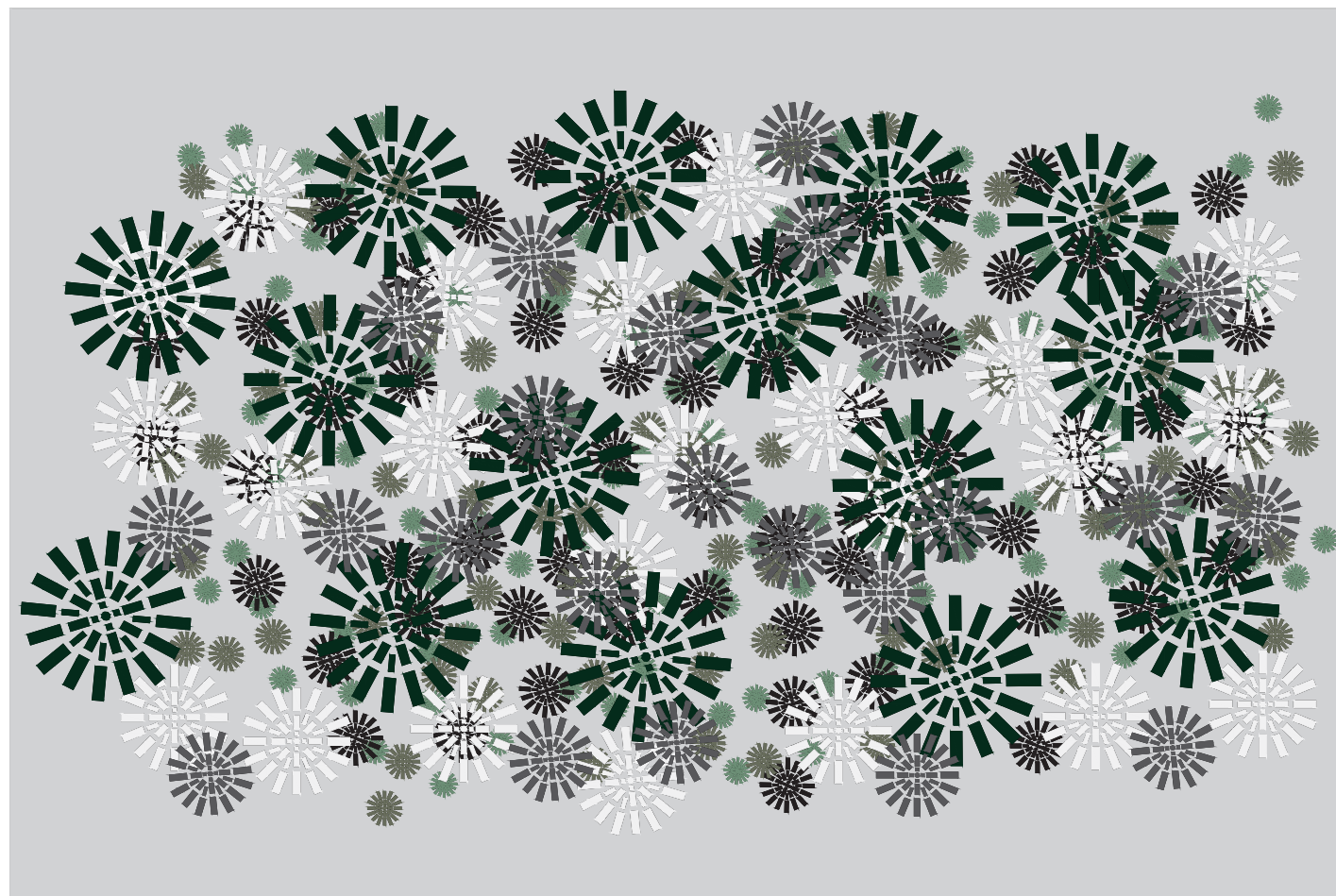


DETALLE BASE LISTONES | e 1:10



CA10 Alfombra a medida de 2,9mØ con diseño Estudi{H}ac personalizado realizado por BARIPERFIL.

PLANTA | e 1:30



DISEÑO ESTUDI{H}AC | e 1:30

REVISION TABLE		DATE
REV	MODIFICATION	

GENERAL NOTES

1. Contractor is to submit coordinated shop drawings to designer for approval prior to construction or installation of any item.
2. If dimensions are shown that conflict with the above notes, the issue is to be brought to the attention of designer for resolution prior to construction or installation.
3. This project only refers to the interior design of the space, without taking into account the local or state regulations. The architect will be responsible for compliance.
4. Each element must be installed in relation to the recommendations of the suppliers.
5. This project can not be reproduced without previous authorization of EstudiHac.

SPECIFIC NOTES

APLICA A BARIPERFIL

PLANTA GENERAL

PLAN N°: 4609-DD-CA11.A REV01

NAME: DISTRIBUCION Y CARPINTERIA
CANTOS

SCALE: 1: 30

DATE: 2019 / 10

UNITS: meters DIMENSIONS: A 3

REVISION TABLE		DATE
REV	MODIFICATION	
REV01		

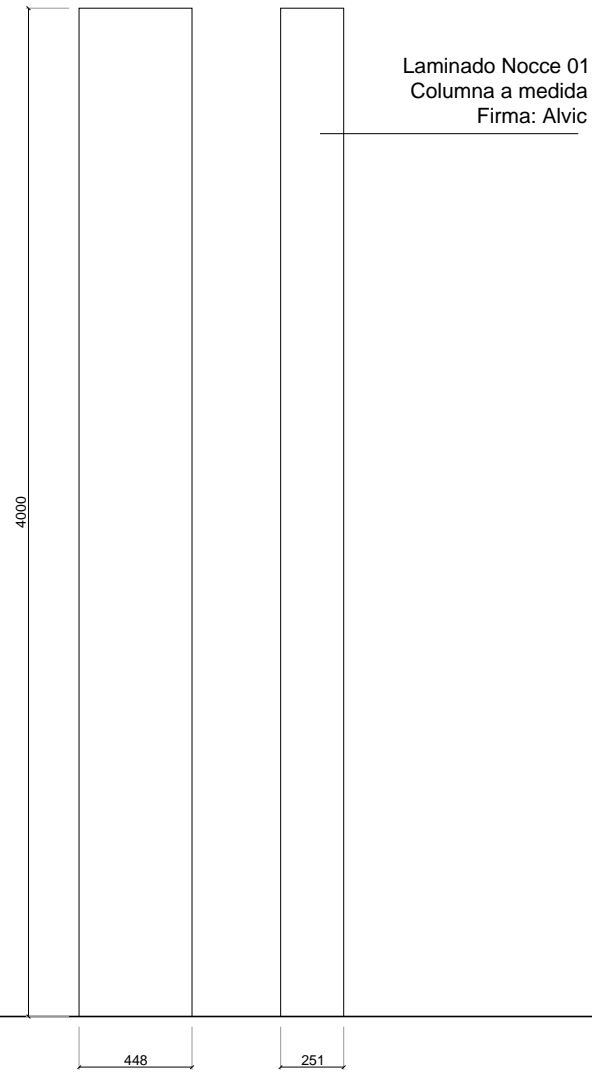
GENERAL NOTES

- Contractor is to submit coordinated shop drawings to designer for approval prior to construction or installation of any item.
- If dimensions are shown that conflict with the above notes, the issue is to be brought to the attention of designer for resolution prior to construction or installation.
- This project only refers to the interior design of the space, without taking into account the local or state regulations. The architect will be responsible for compliance.
- Each element must be installed in relation to the recommendations of the suppliers.
- This project can not be reproduced without previous authorization of EstudiHac.

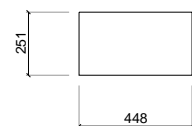
SPECIFIC NOTES

** APLICA A:
-ALVIC

TIPOLOGÍA 01 / COLUMNAS SPA / 2UD

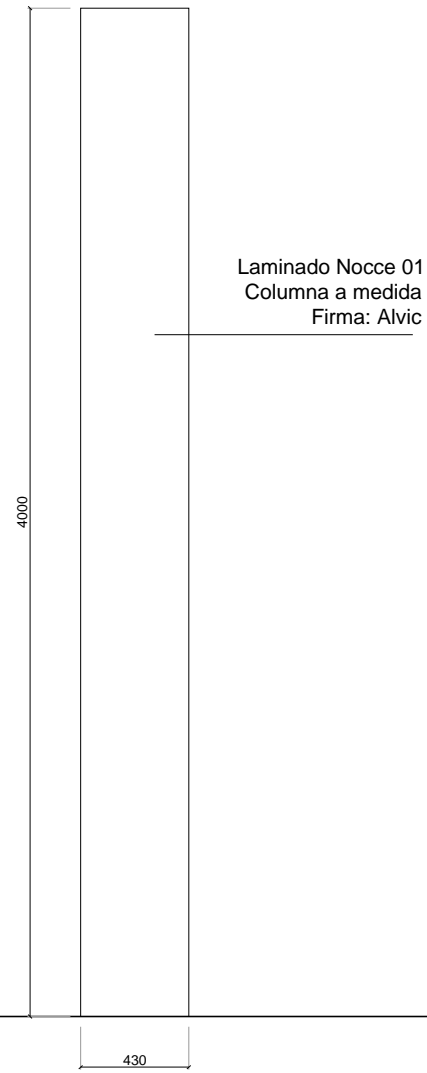


ALZADO FRONTAL | e 1:30



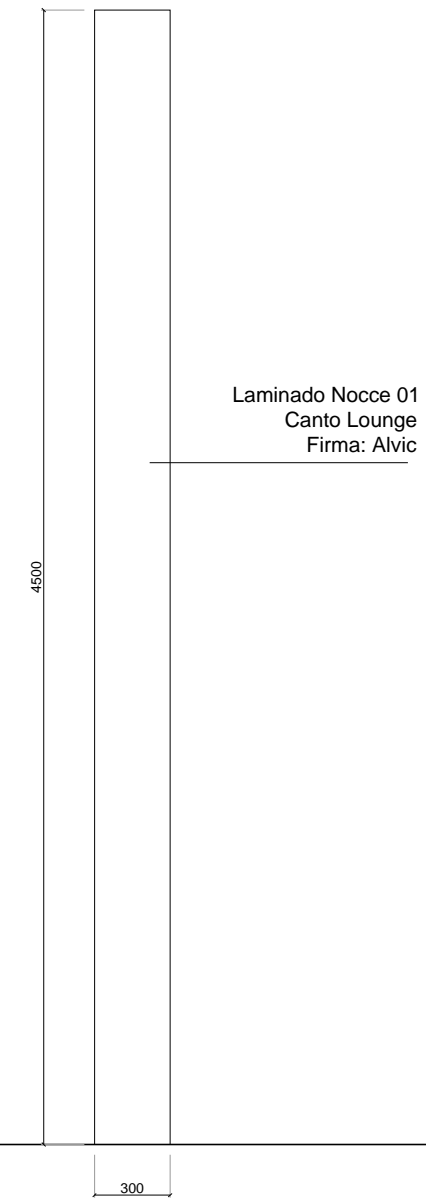
PLANTA | e 1:30

TIPOLOGÍA 02 / CANTO SPA / 1UD



ALZADO FRONTAL | e 1:30

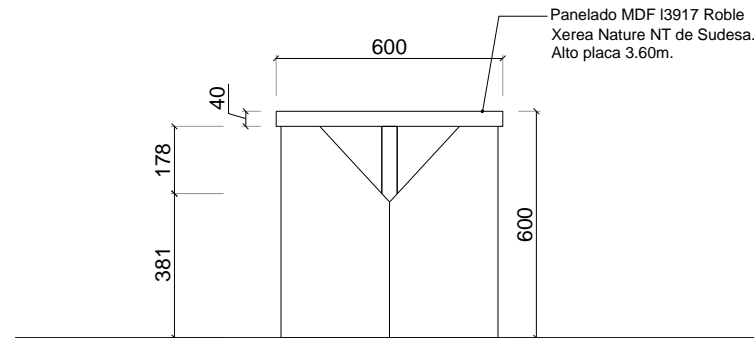
TIPOLOGÍA 03 / CANTO LOUNGE / 3UD



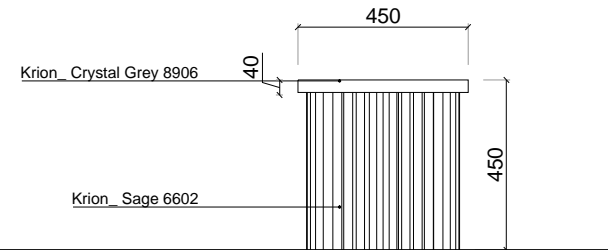
ALZADO FRONTAL | e 1:30

CA11B Mesita de noche 60cmØ de estructura MDF I3917 Roble Xerea Nature NT de SUDESA. Alto placa 3.60m. con distintos acabados de PURICELLI

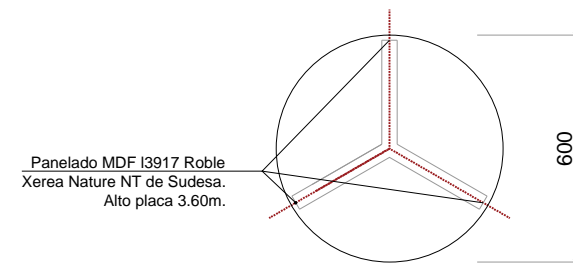
CA11B Mesita de noche 45cmØ de base Crystal Grey 8906 de KRION y soporte Sage 6602 KRION



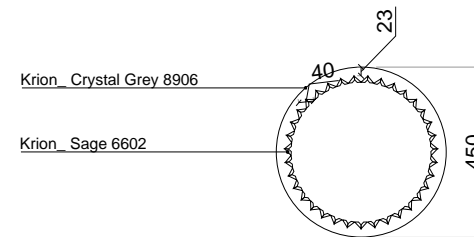
ALZADO FRONTAL | e 1:20



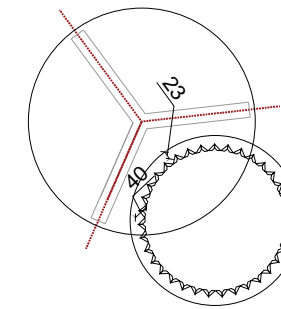
ALZADO FRONTAL | e 1:20



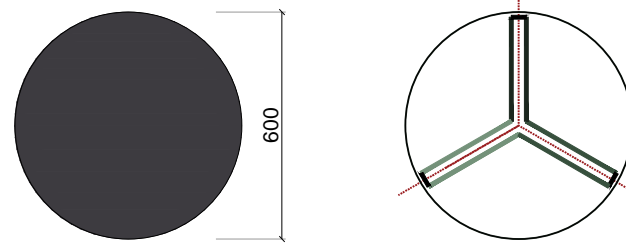
PLANTA | e 1:20



PLANTA | e 1:20



Montaje de las dos mesitas

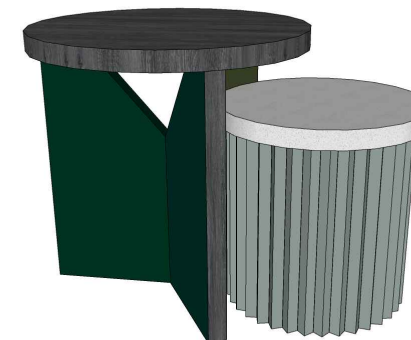


DET. ACABADOS | e 1:20

Medición

Sobre	01ud	0,60mØ / 4cm espesor
Patas	560*286*359*272*102 03ud	014m² / 4cm espesor

- PURICELLI ART. 8810
Fin. NC
- PURICELLI ART. 2010
Fin. SK
- PURICELLI ART. 2023 Fin.
LU
- SUDESA
ROBLE XAREA NATURE



UNITS: meters		DIMENSIONS: A 3	
REVISION TABLE			DATE
REV	MODIFICATION		

GENERAL NOTES

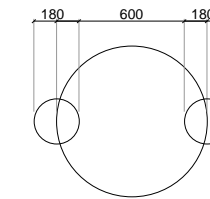
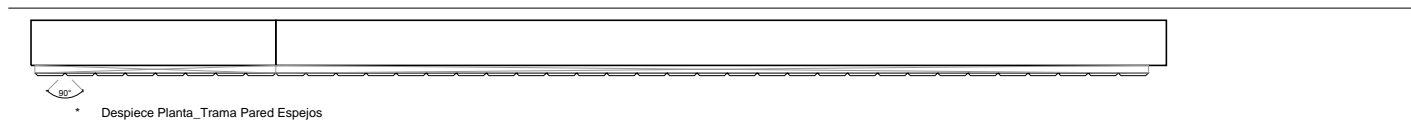
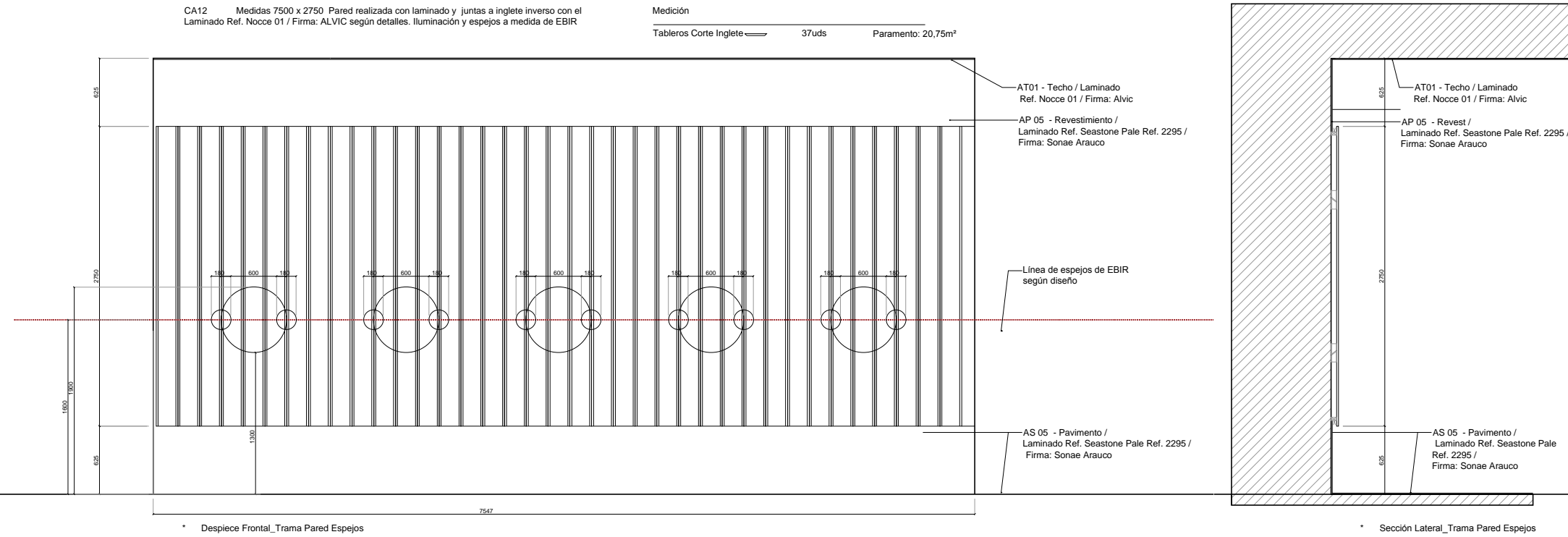
1. Contractor is to submit coordinated shop drawings to designer for approval prior to construction or installation of any item.
2. If dimensions are shown that conflict with the above notes, the issue is to be brought to the attention of designer for resolution prior to construction or installation.
3. This project only refers to the interior design of the space, without taking into account the local or state regulations. The architect will be responsible for compliance.
4. Each element must be installed in relation to the recommendations of the suppliers.
5. This project can not be reproduced without previous authorization of EstudiHac.

SPECIFIC NOTES

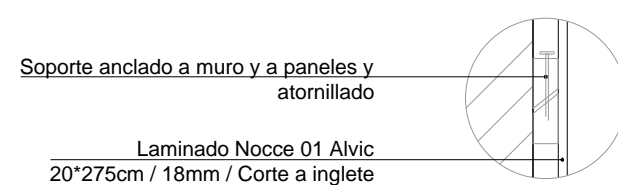
- APLICA A
- PURICELLI
- BARIPERFIL

CA12 Medidas 7500 x 2750 Pared realizada con laminado y juntas a inglete inverso con el Laminado Ref. Nocce 01 / Firma: ALVIC según detalles, iluminación y espejos a medida de EBIR

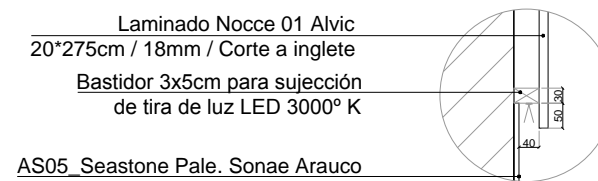
Medición
Tableros Corte Inglete 37uds Paramento: 20,75m²



Detalle Espejo



* Detalle 01 | e1:15



* Detalle 02 | e1:15



* Detalle 03 | e1:15

REVISION TABLE		DATE
REV	MODIFICATION	
REV01		

GENERAL NOTES

- Contractor is to submit coordinated shop drawings to designer for approval prior to construction or installation of any item.
- If dimensions are shown that conflict with the above notes, the issue is to be brought to the attention of designer for resolution prior to construction or installation.
- This project only refers to the interior design of the space, without taking into account the local or state regulations. The architect will be responsible for compliance.
- Each element must be installed in relation to the recommendations of the suppliers.
- This project can not be reproduced without previous authorization of EstudiHac.

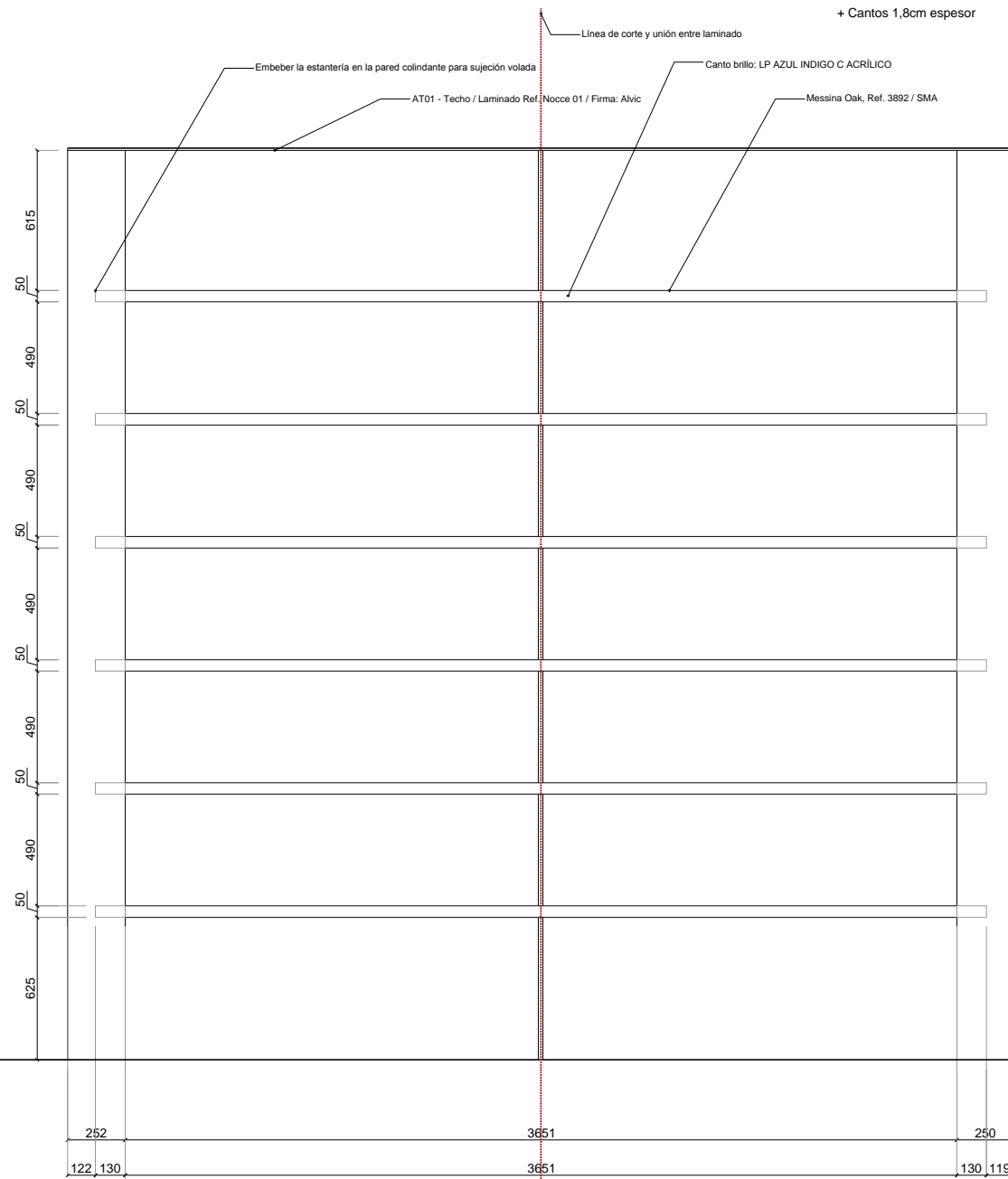
SPECIFIC NOTES

** APLICA A:
-SONAE ARAUCO
-ALVIC
-EBIR

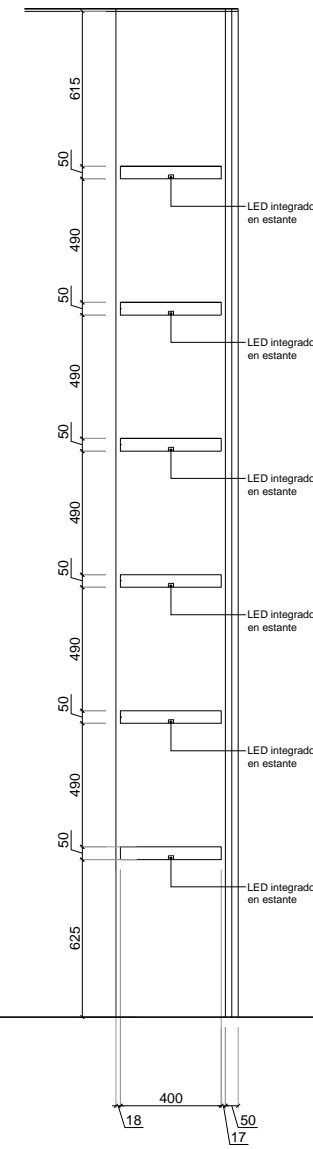
CA13 Estantería de sujeción volada con estantes de laminado Ref. Noce 01 y cantos LP Azul Índigo acrílico acabado brillo de ALVIC. Con tiras de luz led temperatura 3000° integradas

Medición

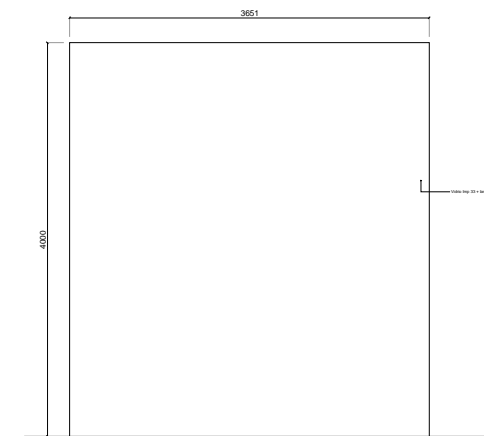
Estantes 3900/500 06uds 10,50m² / 1,8cm espesor
+ Cantos 1,8cm espesor



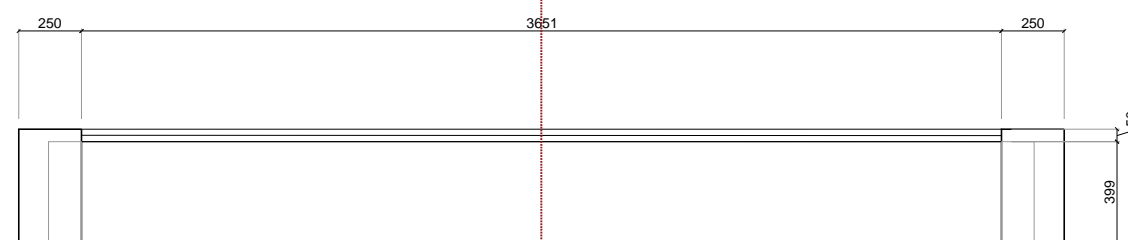
ALZADO FRONTAL | e 1:30



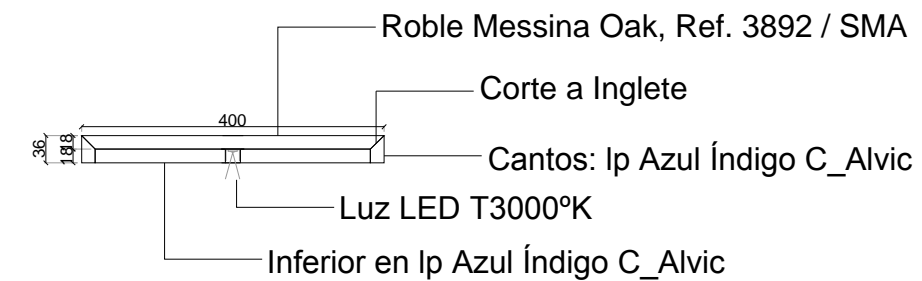
ALZADO LATERAL | e 1:30



CA13.- Vidrio IMP 33 (Secrisa)



PLANTA | e 1:30



DETALLE ESTANTE | e 1:10

* Los cantos van en LP Azul Índigo C Acrílico y corte a inglete en ambos lados

REVISION TABLE		DATE
REV	MODIFICATION	
REV02		

GENERAL NOTES

- Contractor is to submit coordinated shop drawings to designer for approval prior to construction or installation of any item.
- If dimensions are shown that conflict with the above notes, the issue is to be brought to the attention of designer for resolution prior to construction or installation.
- This project only refers to the interior design of the space, without taking into account the local or state regulations. The architect will be responsible for compliance.
- Each element must be installed in relation to the recommendations of the suppliers.
- This project can not be reproduced without previous authorization of EstudiHac.

SPECIFIC NOTES

CA14 Medidas 2900 x 550 x h: 860 Lavabo a medida formado por mitad Laminado Ref. Noce 01 / Firma: ALVIC según detalles y mitad krion Snow white 1100. Parte inferior realizada con laminado y corte a inglete según detalle. Incluye hueco para jarrón y vegetación, así como los grifos desde techo.

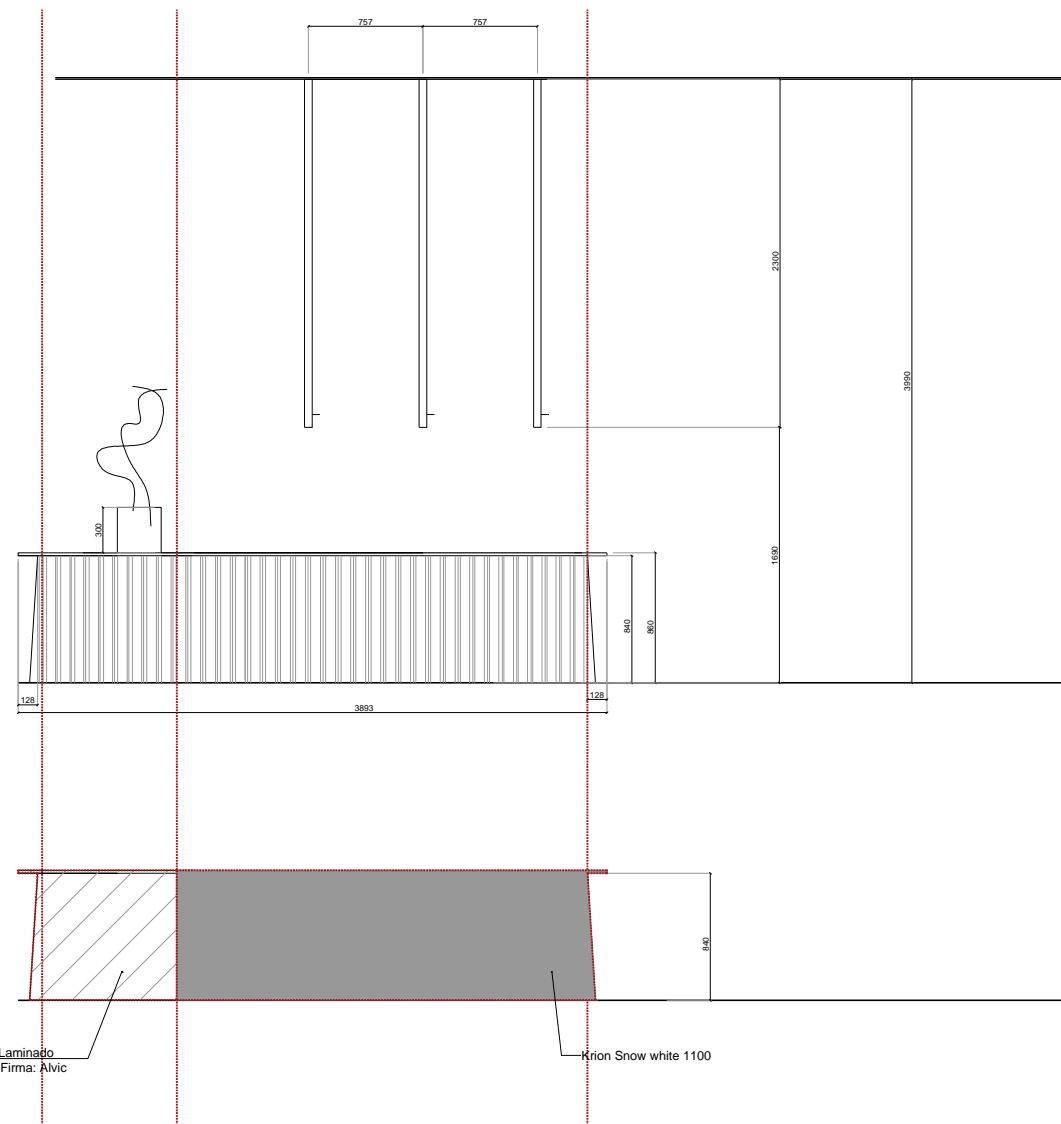
REVISION TABLE		DATE
REV	MODIFICATION	

GENERAL NOTES

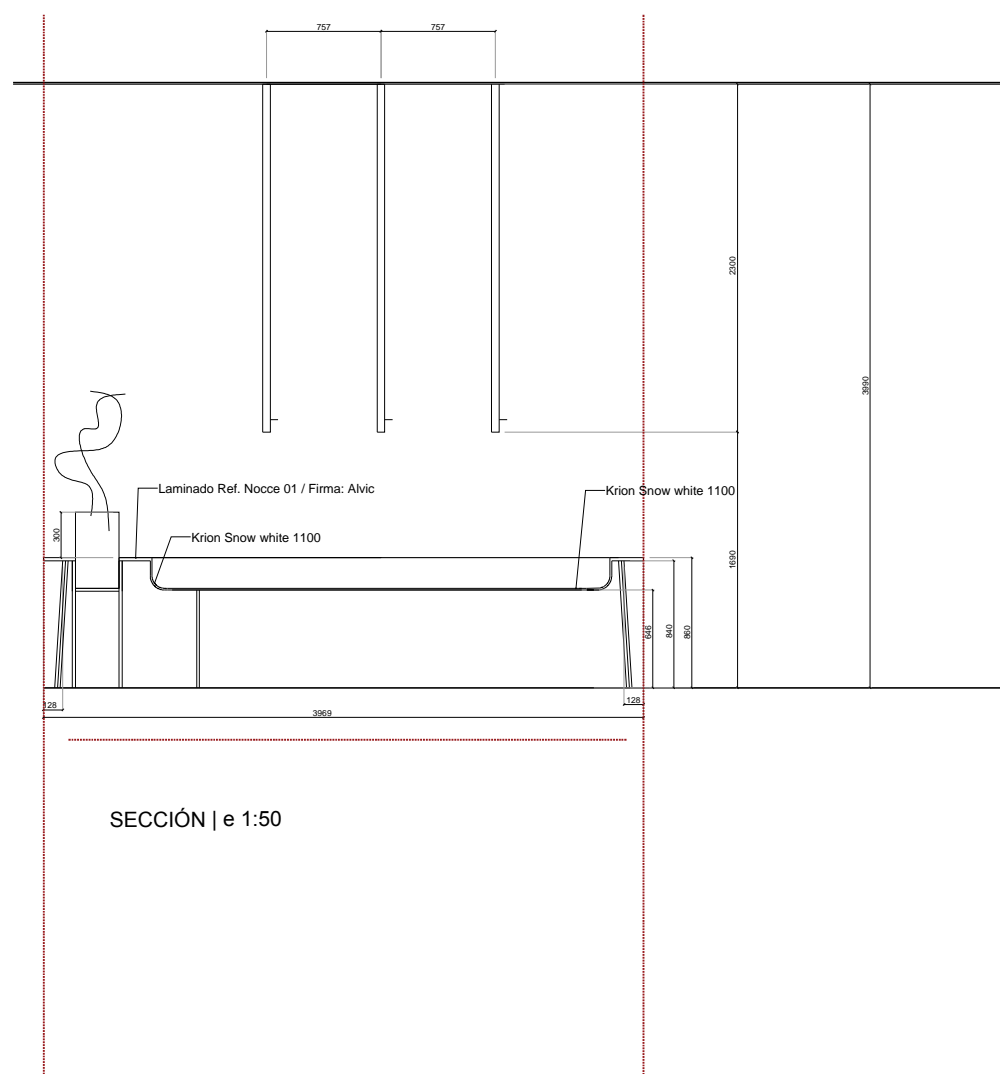
- Contractor is to submit coordinated shop drawings to designer for approval prior to construction or installation of any item.
- If dimensions are shown that conflict with the above notes, the issue is to be brought to the attention of designer for resolution prior to construction or installation.
- This project only refers to the interior design of the space, without taking into account the local or state regulations. The architect will be responsible for compliance.
- Each element must be installed in relation to the recommendations of the suppliers.
- This project can not be reproduced without previous authorization of EstudiHac.

SPECIFIC NOTES

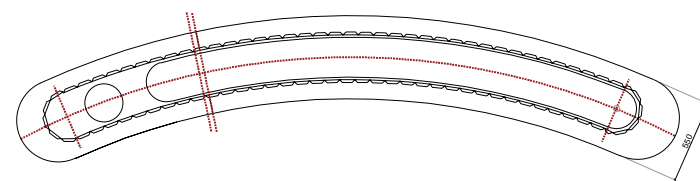
APLICA A:
-ALVIC
-KRION



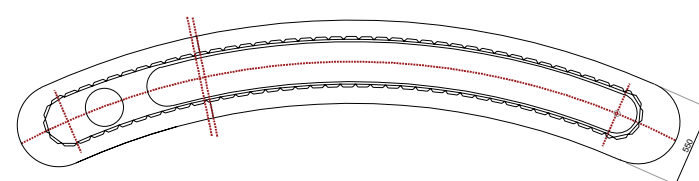
ALZADO LATERAL | e 1:50



SECCIÓN | e 1:50

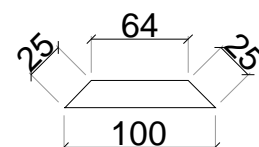


PLANTA | e 1:50



PLANTA | e 1:50

DETALLE PIEZA | e1:5



PLANTA GENERAL

PLAN N°: 4609-DD-CA15.A

NAME: DISTRIBUCION Y CARPINTERÍA
BAÑERA KRION. SPA

SCALE: 1: 30

DATE: 2019 / 10

UNITS: meters DIMENSIONS: A 3

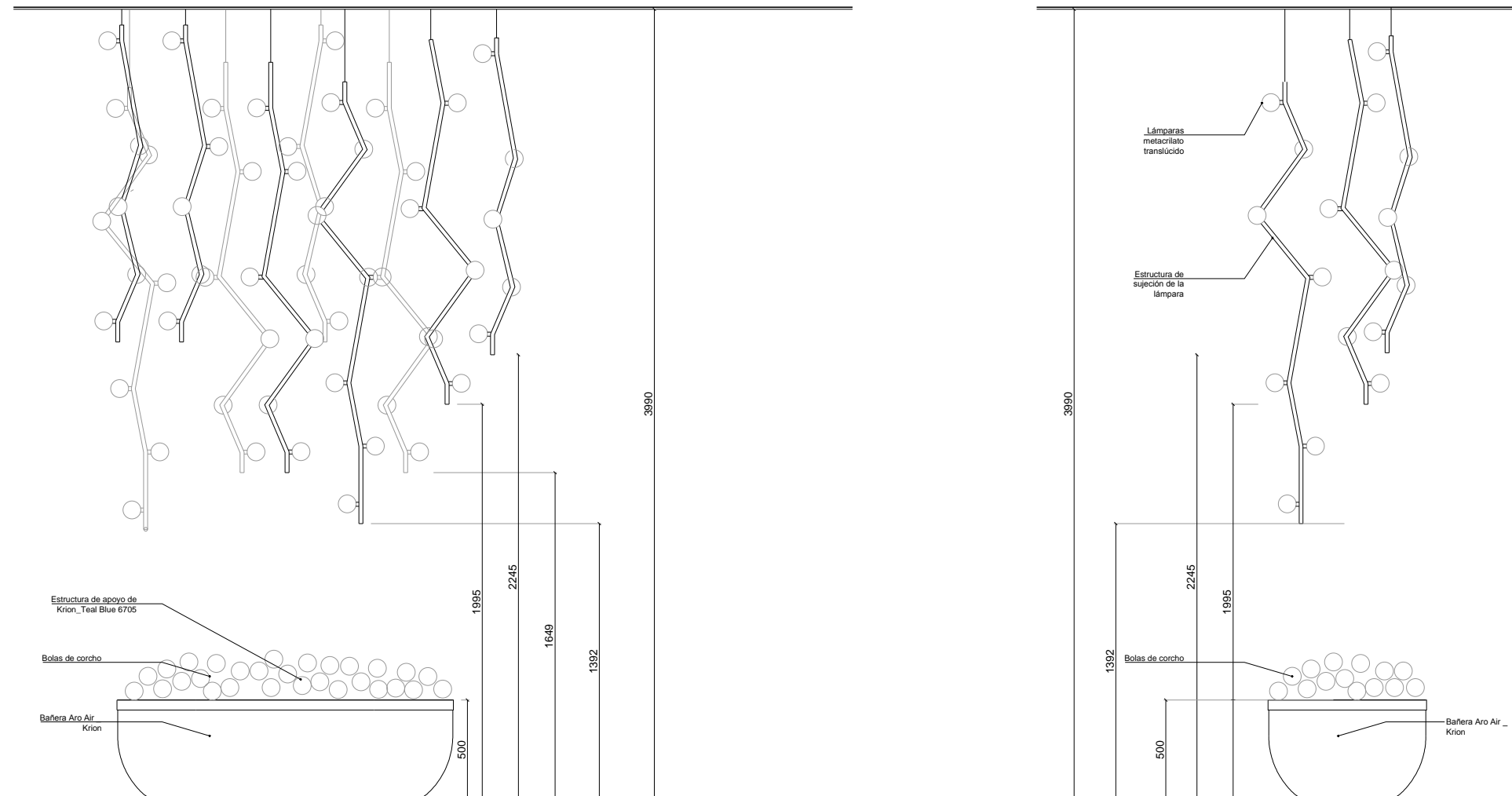
REVISION TABLE		DATE
REV	MODIFICATION	

GENERAL NOTES

- Contractor is to submit coordinated shop drawings to designer for approval prior to construction or installation of any item.
- If dimensions are shown that conflict with the above notes, the issue is to be brought to the attention of designer for resolution prior to construction or installation.
- This project only refers to the interior design of the space, without taking into account the local or state regulations. The architect will be responsible for compliance.
- Each element must be installed in relation to the recommendations of the suppliers.
- This project can not be reproduced without previous authorization of EstudiHac.

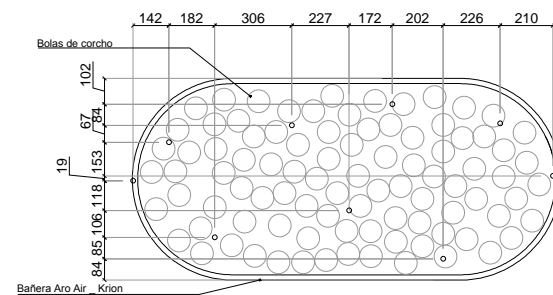
SPECIFIC NOTES

APLICA A:
-KRION



ALZADO FRONTAL | e 1:30

ALZADO LATERAL | e 1:30

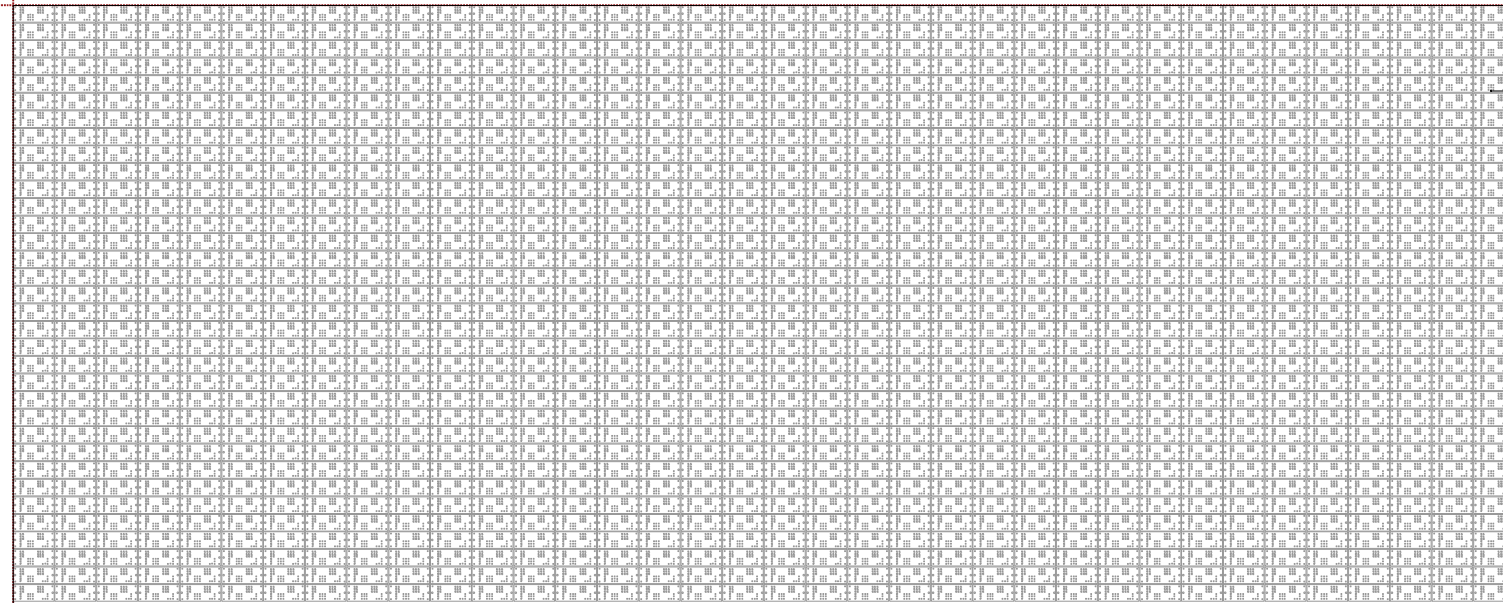


PLANTA | e 1:30

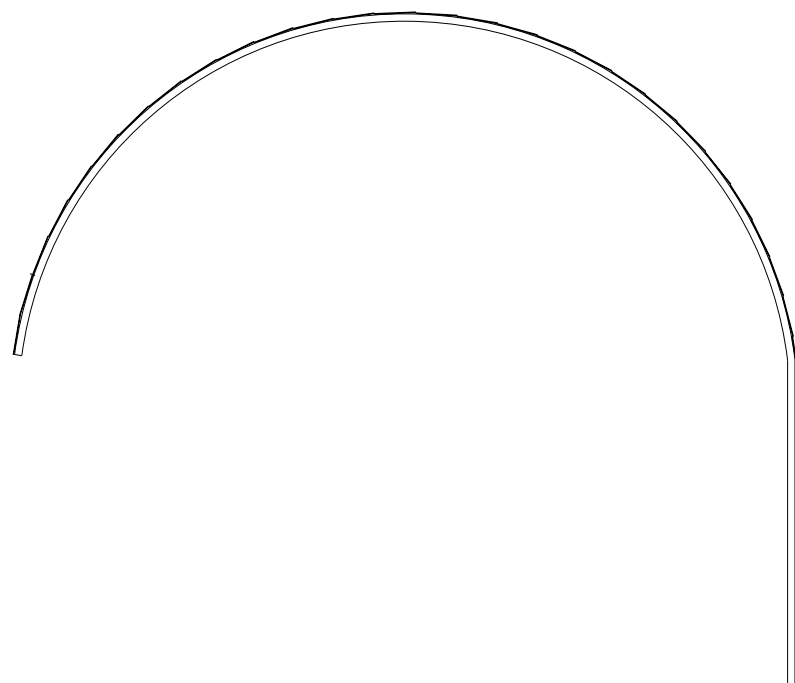
CA15A Decoración compuesta por una estructura de sujeción de bombillas de metacrilato translúcido y bolas de corcho en el interior de la bañera Ref. Aro de la firma KRION.

CA15B Cortina a medida en pared del spa. formada por laminados de madera en distintos tonos azules (SONAE ARAUCO) cortados a medida según diseño. Tiras de luz LED temperatura 3000° arriba y abajo de EBIR. Pared trasera pintada a tono Warm Grey 1U

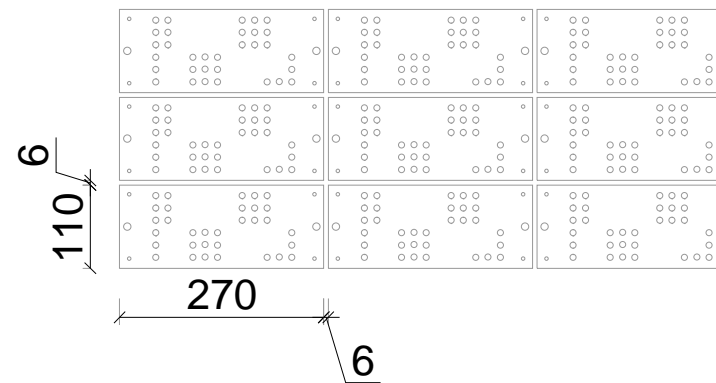
Medición		
Laminados 11x27cm	1224uds	Paramento: 38,64m ²



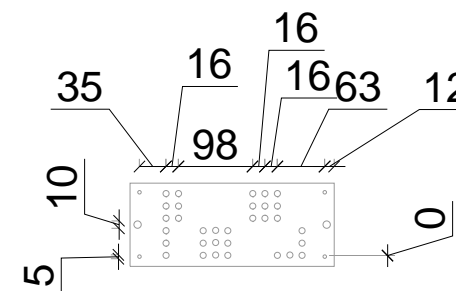
ALZADO FRONTAL | e 1:50



PLANTA | e 1:50



DETALLE | e 1:10



PLANTA GENERAL

PLAN N°: 4609-DD-CA15B H1 DE H2

NAME: DISTRIBUCION Y CARPINTERIA
CORTINA. SPA

SCALE: 1: 50

DATE: 2019 / 10

UNITS: meters DIMENSIONS: A 3

REVISION TABLE		DATE
REV	MODIFICATION	

GENERAL NOTES

1. Contractor is to submit coordinated shop drawings to designer for approval prior to construction or installation of any item.
2. If dimensions are shown that conflict with the above notes, the issue is to be brought to the attention of designer for resolution prior to construction or installation.
3. This project only refers to the interior design of the space, without taking into account the local or state regulations. The architect will be responsible for compliance.
4. Each element must be installed in relation to the recommendations of the suppliers.
5. This project can not be reproduced without previous authorization of EstudiHac.

SPECIFIC NOTES

APLICA A:
SONAE ARAUCO
EBIR