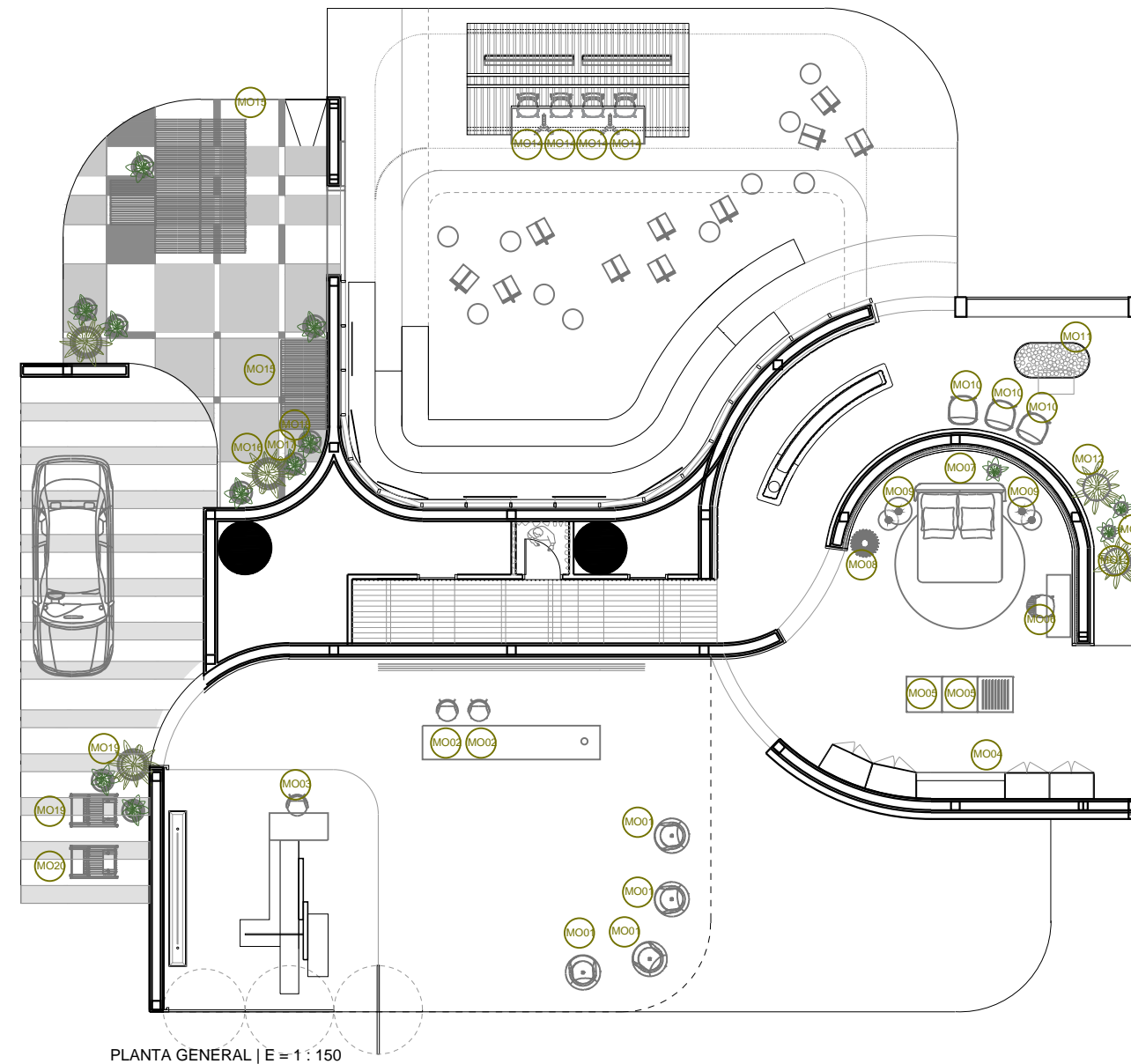


PLANTA GENERAL



PLAN N°: 4609-DD-MO01

NAME: DISTRIBUCION Y MOBILIARIO
PLANTA GENERAL

SCALE: 1: 150

DATE: 2019 / 10

UNITS: meters DIMENSIONS: A 3

REVISION TABLE		DATE
REV	MODIFICATION	

GENERAL NOTES

- Contractor is to submit coordinated shop drawings to designer for approval prior to construction or installation of any item.
- If dimensions are shown that conflict with the above notes, the issue is to be brought to the attention of designer for resolution prior to construction or installation.
- This project only refers to the interior design of the space, without taking into account the local or state regulations. The architect will be responsible for compliance.
- Each element must be installed in relation to the recommendations of the suppliers.
- This project can not be reproduced without previous authorization of EstudiHac.

SPECIFIC NOTES

MONTADOR CONTEMPLAR SOLO COLOCACIÓN EN SITIO, SUMINISTRADO POR PROVEEDORES INDEPENDIENTES.

	MO01 Butaca Magnum Firma: Sancal	4 uds		MO06 Butaca Paul Firma: Colección alexandra	1 uds		MO11 Bañera Aro Air Firma: Vical Home	3 uds		MO16 Macetero Marquis. Tamaño 01 Firma: Vondom	- uds
	MO02 Taburete Magnum Firma: Sancal	2 uds		MO07 Cabecero Firma: Colección alexandra	1 uds		MO12 Macetero de krion. Tamaño Grande Firma: Krion	1 uds		MO17 Macetero Marquis. Tamaño 02 Firma: Vondom	- uds
	MO03- Taburete Magnum Firma: Sancal	1 uds		MO08 Lámpara Firma: Vical Home	1 uds		MO13 Macetero de krion. Tamaño Pequeño Firma: Krion	1 uds		MO18 Macetero Marquis. Tamaño 03 Firma: Vondom	- uds
	MO04 Silla Cricket Firma: Colección alexandra	4 uds		MO09 Lámpara en Mesita Auxiliar Firma: Vical Home	1 uds		MO14 Silla Hari Firma: Ondarreta	1 uds		MO19 Macetero Mist Negro. Firma: Point	- uds
	MO05 Pouf Hardy Firma: B&V	2 uds		MO10 Butaca Bowler Firma: Vical Home	3 uds		MO15 Conjunto de sillas Firma: Vondom	1 uds		MO20 Butaca Firma: Vondom	- uds

PLANTA GENERAL

PLAN N°: 4609-DD-IL02

NAME: ELECTRICIDAD
PLANTA GENERAL

SCALE: 1: 150

DATE: 2019 / 10

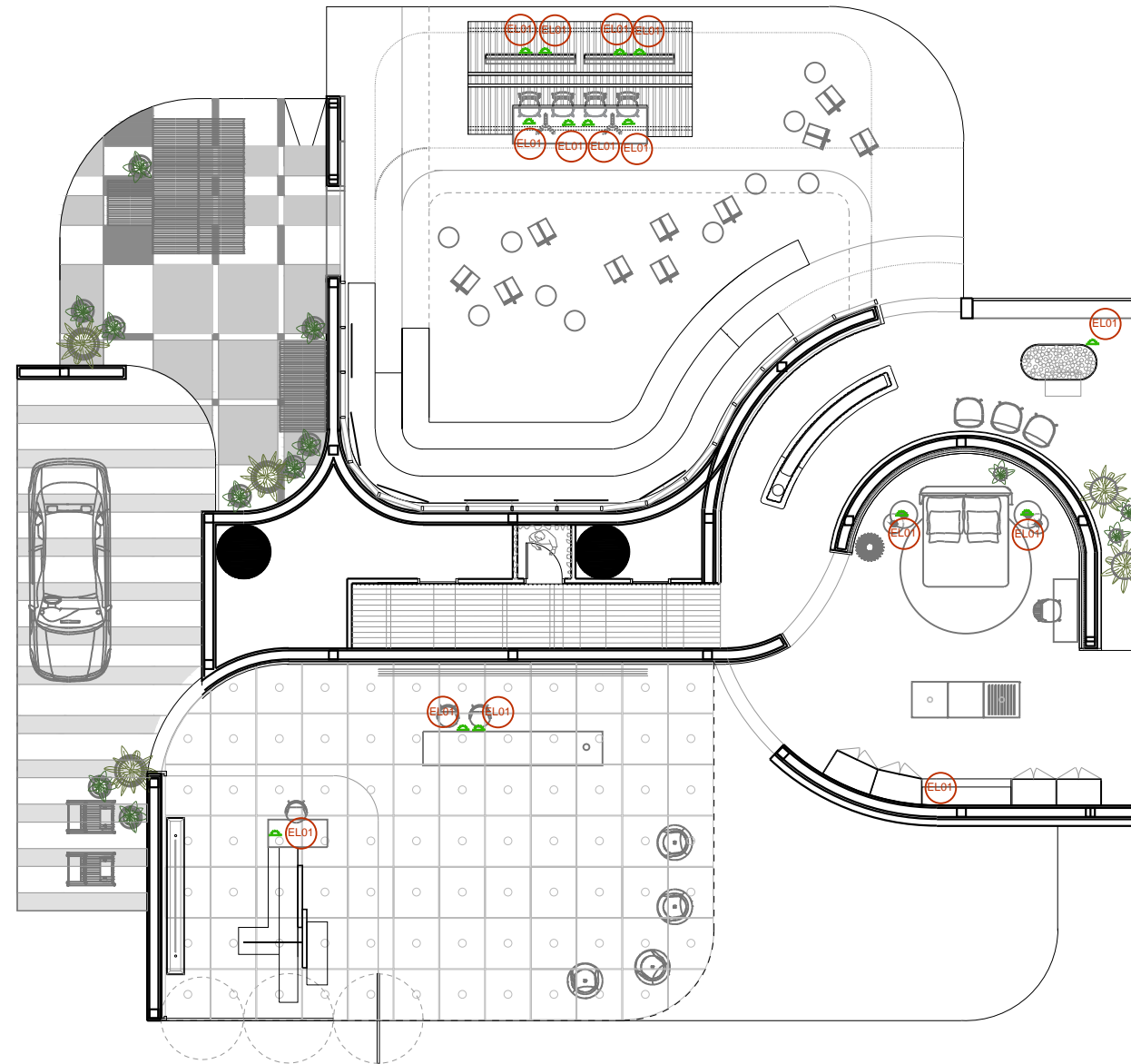
UNITS: meters DIMENSIONS: A 3

REVISION TABLE		DATE
REV	MODIFICATION	


GENERAL NOTES

1. Contractor is to submit coordinated shop drawings to designer for approval prior to construction or installation of any item.
2. If dimensions are shown that conflict with the above notes, the issue is to be brought to the attention of designer for resolution prior to construction or installation.
3. This project only refers to the interior design of the space, without taking into account the local or state regulations. The architect will be responsible for compliance.
4. Each element must be installed in relation to the recommendations of the suppliers.
5. This project can not be reproduced without previous authorization of EstudiHac.

SPECIFIC NOTES



PLANTA GENERAL | E = 1 : 150

 EL01.- ENCHUFE EN SUELO15 uds

PLANTA GENERAL

PLAN N°: 4609-DD-IL01

NAME: ILUMINACIÓN
PLANTA GENERAL

SCALE: 1: 150

DATE: 2019 / 10

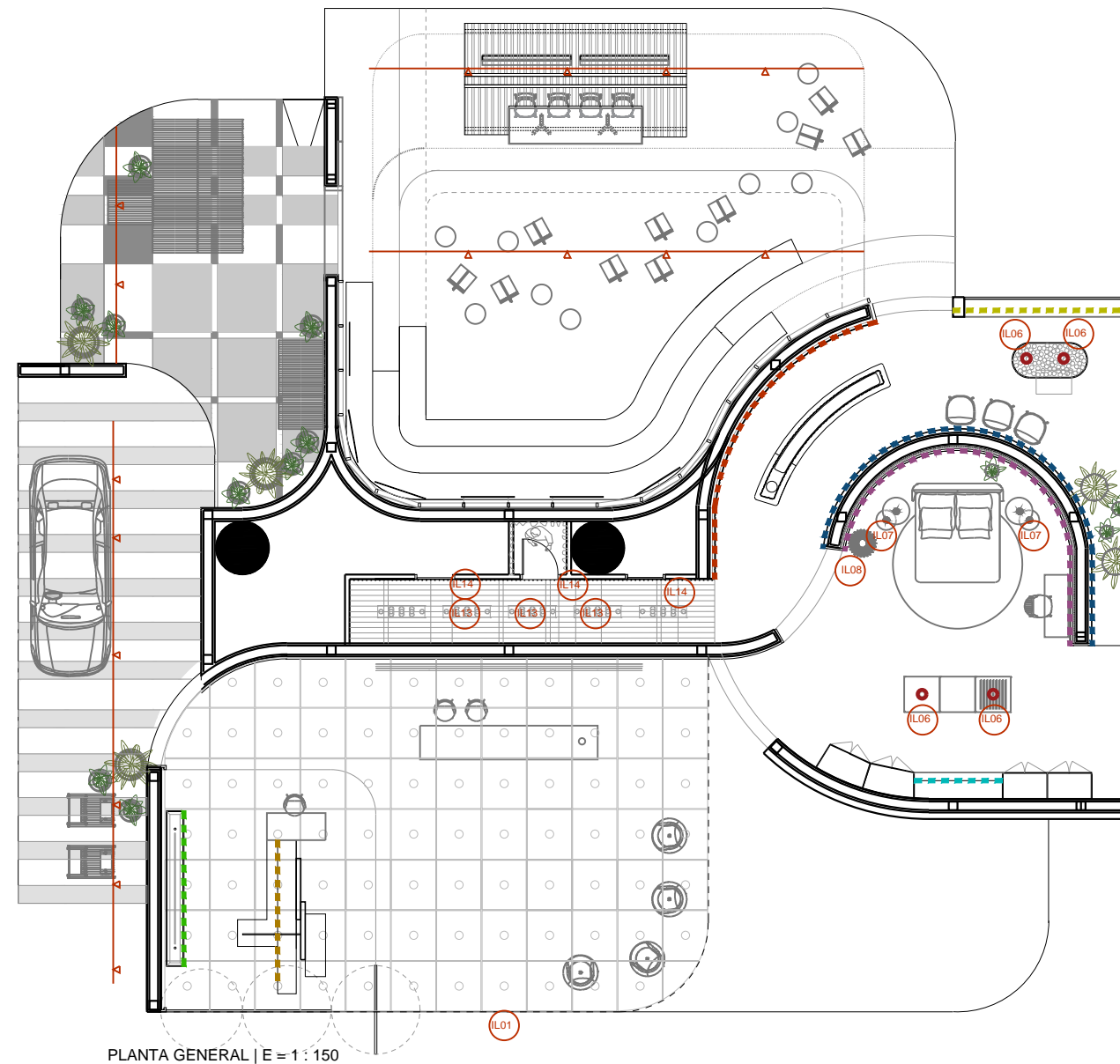
UNITS: meters DIMENSIONS: A 3

REVISION TABLE		DATE
REV	MODIFICATION	

GENERAL NOTES

- Contractor is to submit coordinated shop drawings to designer for approval prior to construction or installation of any item.
- If dimensions are shown that conflict with the above notes, the issue is to be brought to the attention of designer for resolution prior to construction or installation.
- This project only refers to the interior design of the space, without taking into account the local or state regulations. The architect will be responsible for compliance.
- Each element must be installed in relation to the recommendations of the suppliers.
- This project can not be reproduced without previous authorization of EstudiHac.

SPECIFIC NOTES



- IL01.- LÁMPARA CON APLIQUE NEGRO VISTO / BOMBILLA OPACA / LUZ T° 3000K.....82 uds
- IL02.- TIRAS DE LED 3000° K / EMBEBIDAS EN ESTANTERÍA.....21ml
- IL03.- TIRA DE LUZ LED 3000° K.....3,15ml
- IL04.- TIRA DE LUZ LED 3000° K EN MOLDURA / ARRIBA Y ABAJO.....19,12ml
- IL05.- TIRA DE LUZ LED 3000° K / ESTANTERÍAS ARMARIO.....9,9ml
- IL06.- DOWNLIGHT.....2 uds

- IL07.- LÁMPARA DECORATIVA AUXILIAR / VICAL HOME.....4 uds
- IL08.- CONJUNTO LÁMPARA DECORATIVA / VICAL HOME.....1 ud
- IL09.- TIRAS DE LUZ LED 3000° K / EMBEBIDA EN ESTANTES.....24,24ml
- IL10.-TIRA DE LUZ LED 3000° K / EMBEBIDA EN SUELO Y TECHO.....22,14ml
- IL11.- TIRA DE LUZ LED 3000° K / ARRIBA Y ABAJO.....15ml
- IL12.- PROYECTORES.....14 uds
- IL13.- LÁMPARA SKYLINE DE TECHO(SOLO PROYECCIÓN INFERIOR).....03 uds
- IL14.- LÁMPARA SKYLINE DE PARED.....03 uds

PLANTA GENERAL

PLAN Nº: 4609-DD-DI01 H1 DE H2

NAME: DISTRIBUCION
PLANTA GENERAL

SCALE: 1: 100

DATE: 2019 / 10

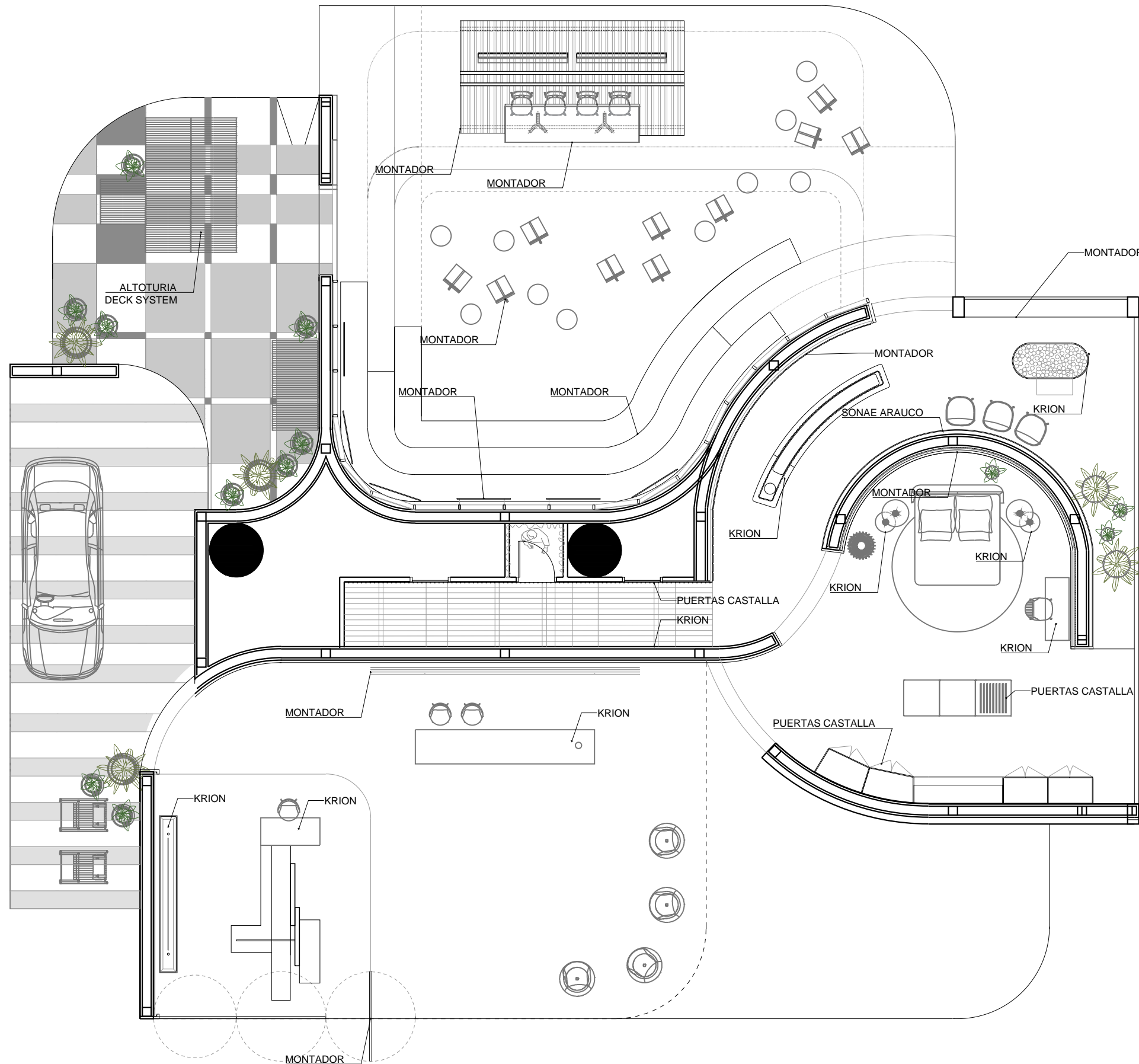
UNITS: meters DIMENSIONS: A 3

REVISION TABLE		DATE
REV	MODIFICATION	

GENERAL NOTES

1. Contractor is to submit coordinated shop drawings to designer for approval prior to construction or installation of any item.
2. If dimensions are shown that conflict with the above notes, the issue is to be brought to the attention of designer for resolution prior to construction or installation.
3. This project only refers to the interior design of the space, without taking into account the local or state regulations. The architect will be responsible for compliance.
4. Each element must be installed in relation to the recommendations of the suppliers.
5. This project can not be reproduced without previous authorization of EstudiHac.

SPECIFIC NOTES



PLANTA GENERAL

PLAN N°: 4609-DD-DI02 H4 DE H4

NAME: ALZADO D D'
TERRAZAS

SCALE: 1: 100

DATE: 2019 / 10

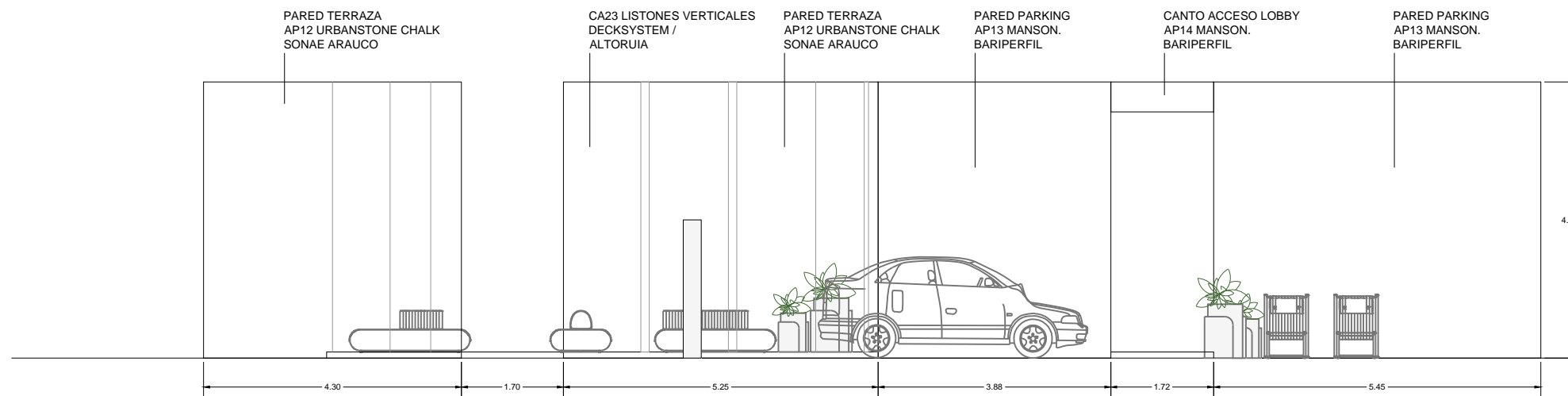
UNITS: meters DIMENSIONS: A 3

REVISION TABLE		DATE
REV	MODIFICATION	

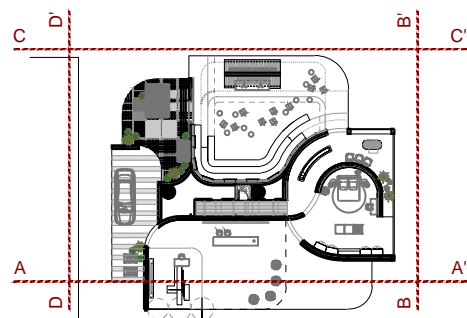
GENERAL NOTES

1. Contractor is to submit coordinated shop drawings to designer for approval prior to construction or installation of any item.
2. If dimensions are shown that conflict with the above notes, the issue is to be brought to the attention of designer for resolution prior to construction or installation.
3. This project only refers to the interior design of the space, without taking into account the local or state regulations. The architect will be responsible for compliance.
4. Each element must be installed in relation to the recommendations of the suppliers.
5. This project can not be reproduced without previous authorization of EstudiHac.

SPECIFIC NOTES



ALZADO D-D' | E = 1 : 100



PLANTA REFERENCIA

PLANTA GENERAL

PLAN N°: 4609-DD-DI02 H3 DE H4

NAME: ALZADO C-C'
LOUNGE

SCALE: 1: 100

DATE: 2019 / 10

UNITS: meters

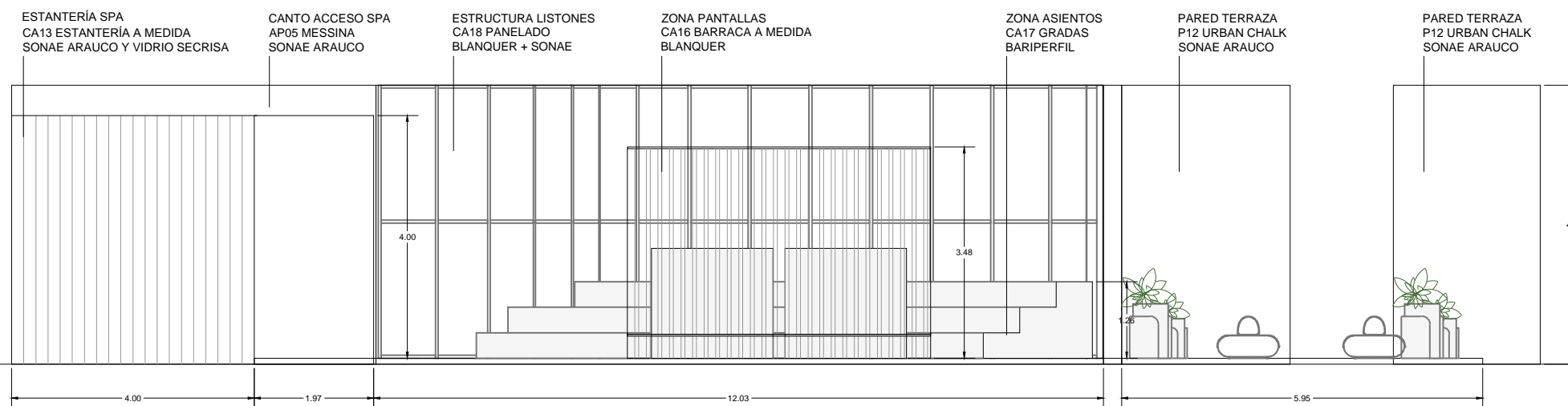
DIMENSIONS: A 3

REVISION TABLE		DATE
REV	MODIFICATION	

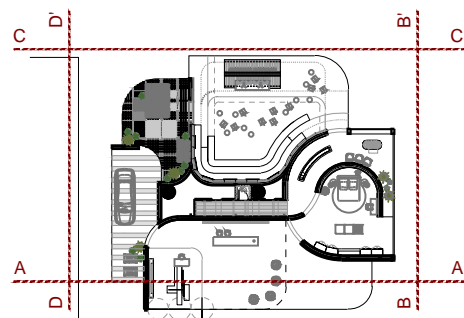
GENERAL NOTES

- Contractor is to submit coordinated shop drawings to designer for approval prior to construction or installation of any item.
- If dimensions are shown that conflict with the above notes, the issue is to be brought to the attention of designer for resolution prior to construction or installation.
- This project only refers to the interior design of the space, without taking into account the local or state regulations. The architect will be responsible for compliance.
- Each element must be installed in relation to the recommendations of the suppliers.
- This project can not be reproduced without previous authorization of EstudiHac.

SPECIFIC NOTES



ALZADO C-C' | E = 1 : 100



PLANTA REFERENCIA

PLANTA GENERAL

PLAN N°: 4609-DD-DI02 H2 DE H4

NAME: ALZADO B B'
SUITE ROOM/SPA

SCALE: 1: 100

DATE: 2019 / 10

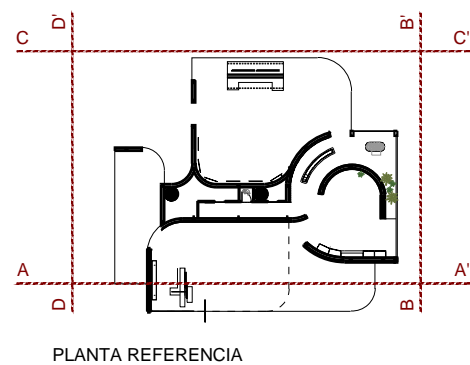
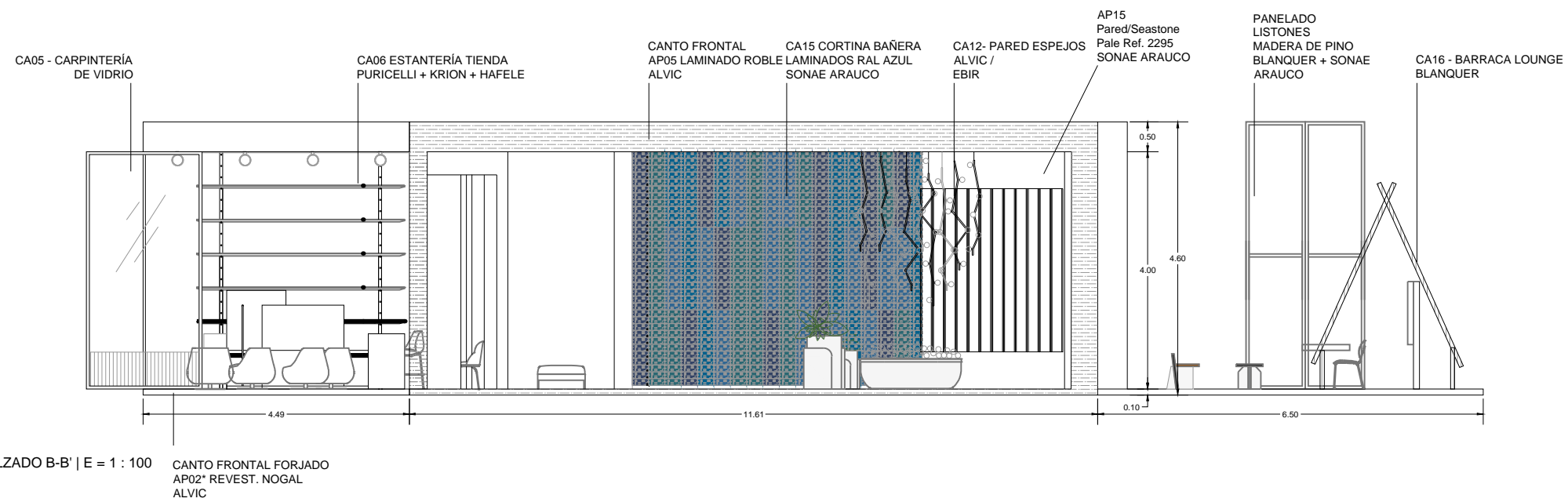
UNITS: meters DIMENSIONS: A 3

REVISION TABLE		DATE
REV	MODIFICATION	

GENERAL NOTES

- Contractor is to submit coordinated shop drawings to designer for approval prior to construction or installation of any item.
- If dimensions are shown that conflict with the above notes, the issue is to be brought to the attention of designer for resolution prior to construction or installation.
- This project only refers to the interior design of the space, without taking into account the local or state regulations. The architect will be responsible for compliance.
- Each element must be installed in relation to the recommendations of the suppliers.
- This project can not be reproduced without previous authorization of EstudiHac.

SPECIFIC NOTES



PLANTA REFERENCIA

PLANTA GENERAL

PLAN N°: 4609-DD-DI02 H1 DE H4

NAME: ALZADO A A'
LOBBY

SCALE: 1: 100

DATE: 2019 / 10

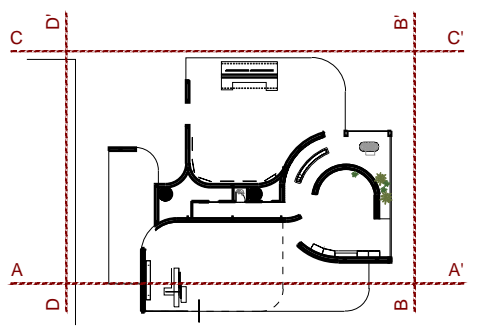
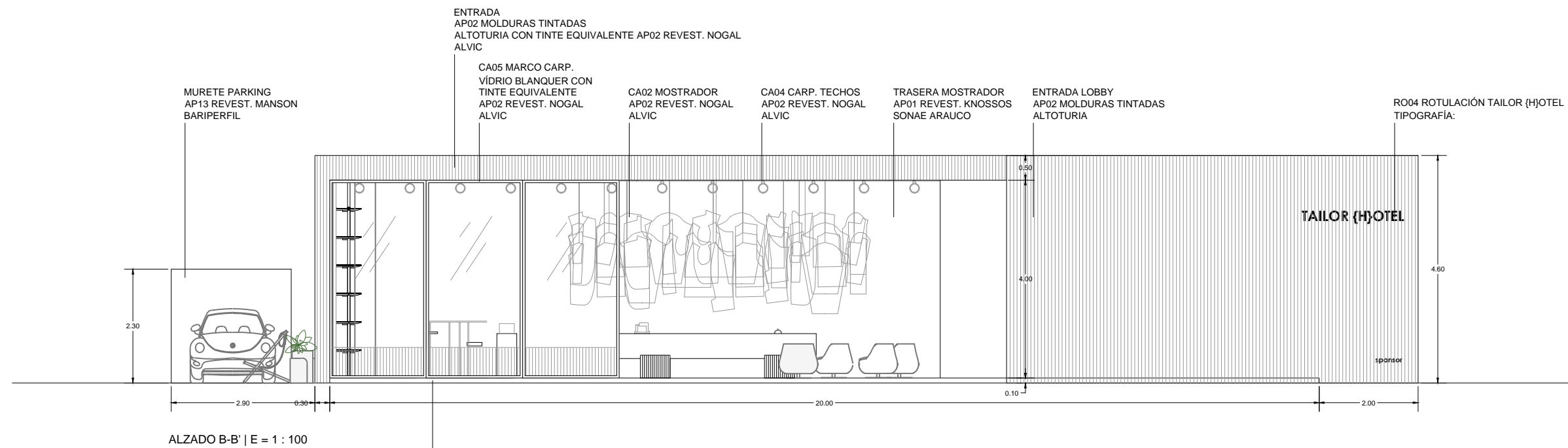
UNITS: meters DIMENSIONS: A 3

REVISION TABLE		DATE
REV	MODIFICATION	

GENERAL NOTES

- Contractor is to submit coordinated shop drawings to designer for approval prior to construction or installation of any item.
- If dimensions are shown that conflict with the above notes, the issue is to be brought to the attention of designer for resolution prior to construction or installation.
- This project only refers to the interior design of the space, without taking into account the local or state regulations. The architect will be responsible for compliance.
- Each element must be installed in relation to the recommendations of the suppliers.
- This project can not be reproduced without previous authorization of EstudiHac.

SPECIFIC NOTES



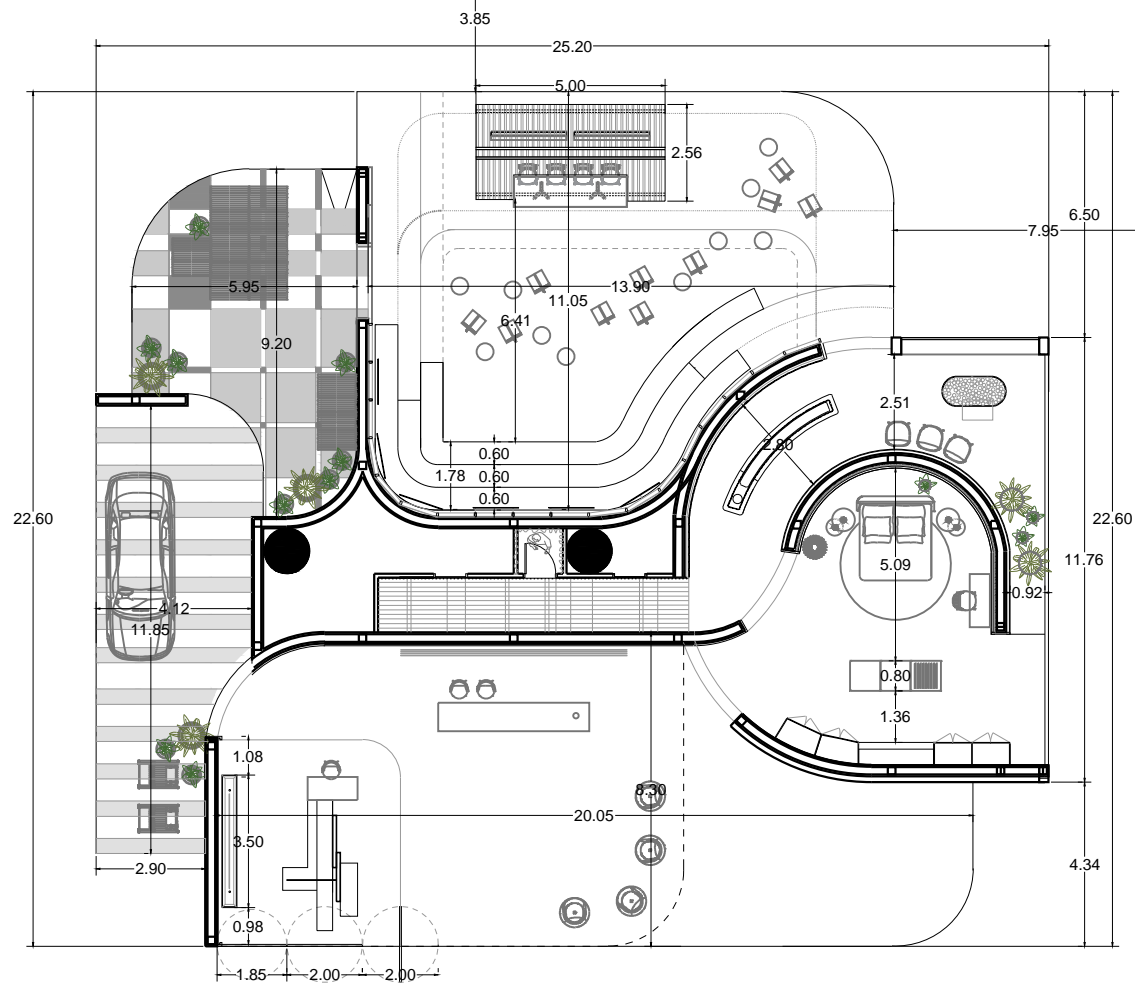
PLANTA REFERENCIA

REVISION TABLE		DATE
REV	MODIFICATION	

GENERAL NOTES

- Contractor is to submit coordinated shop drawings to designer for approval prior to construction or installation of any item.
- If dimensions are shown that conflict with the above notes, the issue is to be brought to the attention of designer for resolution prior to construction or installation.
- This project only refers to the interior design of the space, without taking into account the local or state regulations. The architect will be responsible for compliance.
- Each element must be installed in relation to the recommendations of the suppliers.
- This project can not be reproduced without previous authorization of EstudiHac.

SPECIFIC NOTES



PLANTA GENERAL

PLAN Nº: 4609-DD-DI01 H1 DE H2

NAME: DISTRIBUCION
 PLANTA GENERAL

SCALE: 1: 100

DATE: 2019 / 10

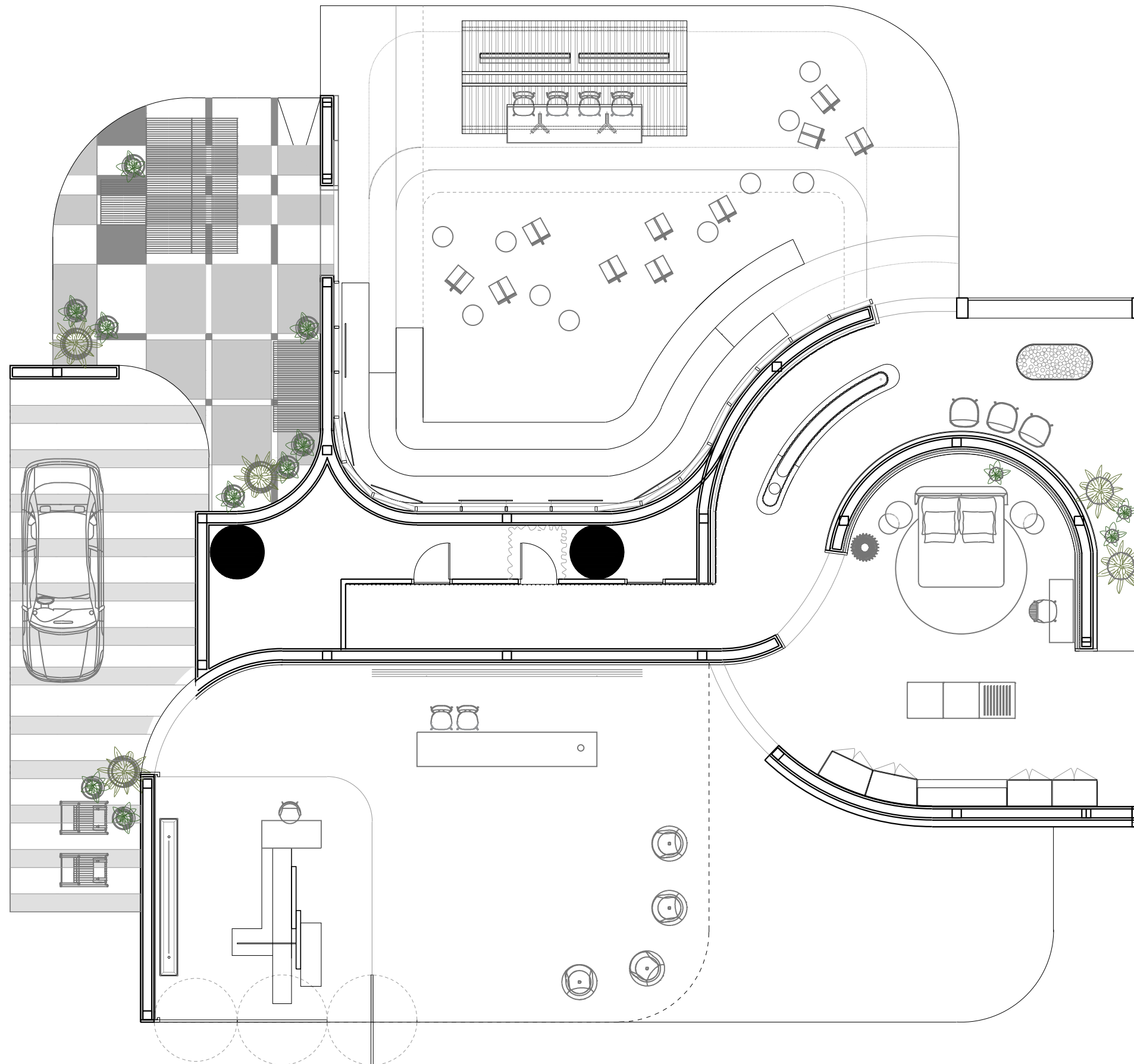
UNITS: meters DIMENSIONS: A 3

REVISION TABLE		DATE
REV	MODIFICATION	

GENERAL NOTES

1. Contractor is to submit coordinated shop drawings to designer for approval prior to construction or installation of any item.
2. If dimensions are shown that conflict with the above notes, the issue is to be brought to the attention of designer for resolution prior to construction or installation.
3. This project only refers to the interior design of the space, without taking into account the local or state regulations. The architect will be responsible for compliance.
4. Each element must be installed in relation to the recommendations of the suppliers.
5. This project can not be reproduced without previous authorization of EstudiHac.

SPECIFIC NOTES



PLANTA GENERAL

PLAN N°: 4609-DD-CA25

NAME: DISTRIBUCION Y CARPINTERIA
CANTOS ESPEJO. SUITE ROOM

SCALE: 1: 50

DATE: 2019 / 10

UNITS: meters DIMENSIONS: A 3

REVISION TABLE		DATE
REV	MODIFICATION	

GENERAL NOTES

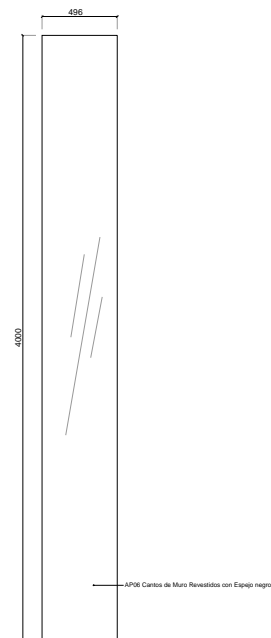
- Contractor is to submit coordinated shop drawings to designer for approval prior to construction or installation of any item.
- If dimensions are shown that conflict with the above notes, the issue is to be brought to the attention of designer for resolution prior to construction or installation.
- This project only refers to the interior design of the space, without taking into account the local or state regulations. The architect will be responsible for compliance.
- Each element must be installed in relation to the recommendations of the suppliers.
- This project can not be reproduced without previous authorization of EstudiHac.

SPECIFIC NOTES

CA25.- Cantos de muro revestidos de Espejo. Suite Room

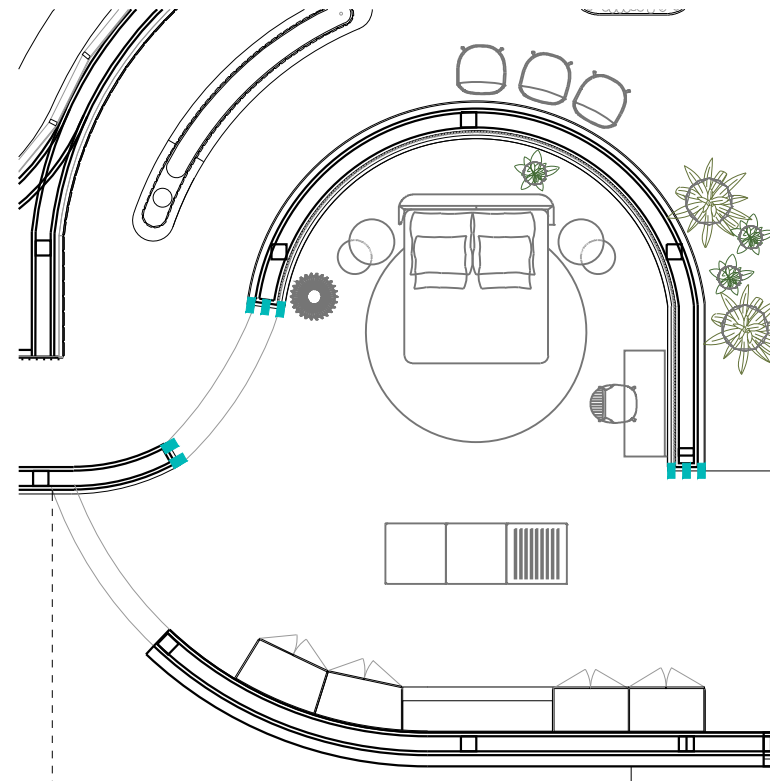
03 ud

CA25 Carpintería espejos a medida de comunicación entre zonas

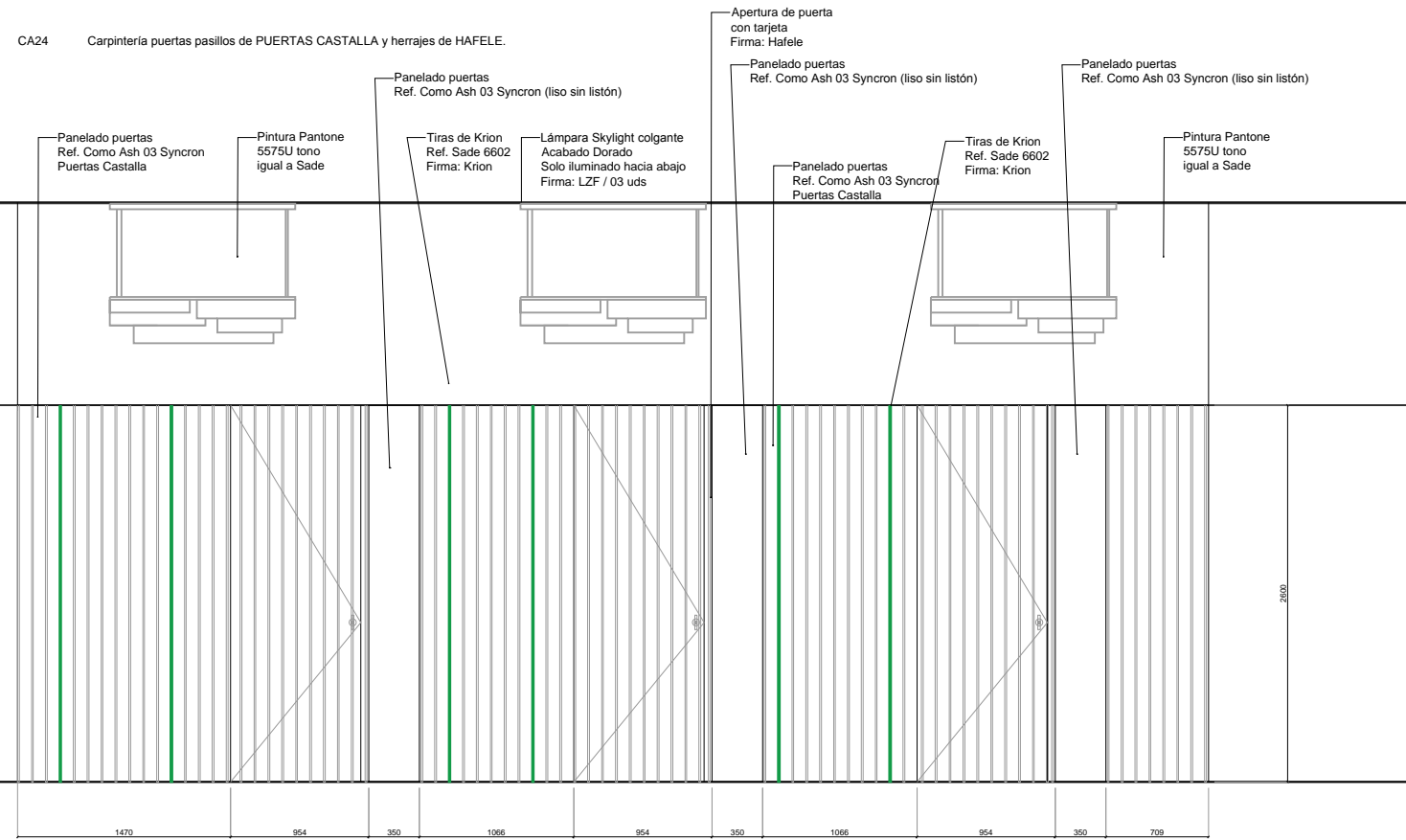


1758 Cantos de Muro Revestidos con Espejo negro

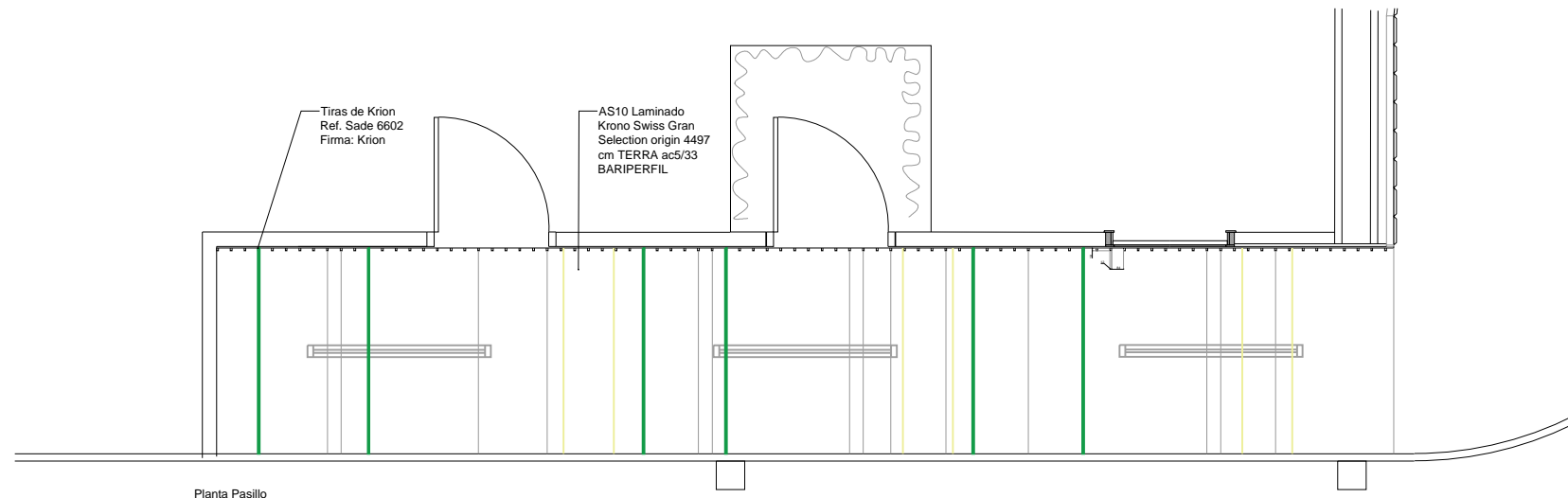
* Alzado Espejo



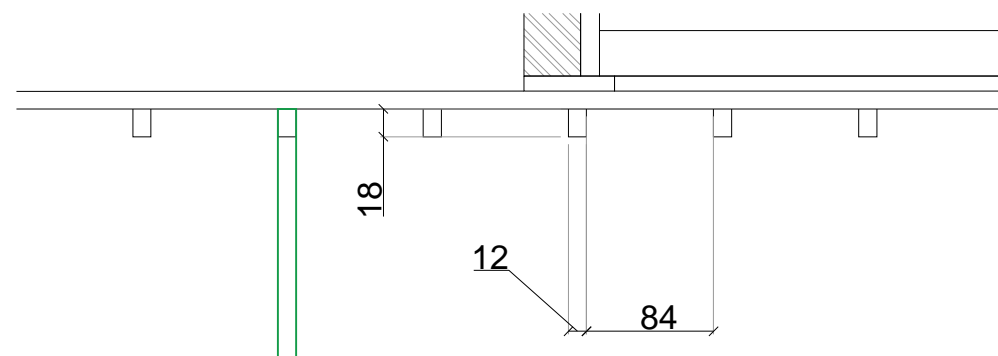
* Ubicación de cantos revestidos de Espejo - - - -



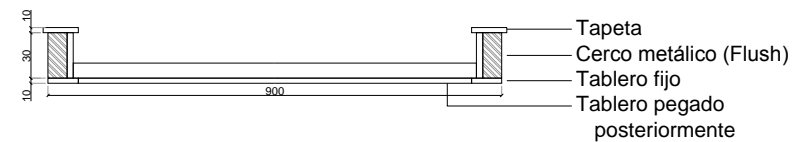
Alzado puertas



Planta Pasillo



Detalle panelado 1:5



PLANTA GENERAL

PLAN N°: 4609-DD-CA24 H1 DE H2 REV01

NAME: DISTRIBUCION Y CARPINTERIA
PUERTAS Y REVEST. PASILLO

SCALE: 1: 50

DATE: 2019 / 10

UNITS: meters

DIMENSIONS: A 3

REVISION TABLE

DATE

REV	MODIFICATION	DATE
REV01		

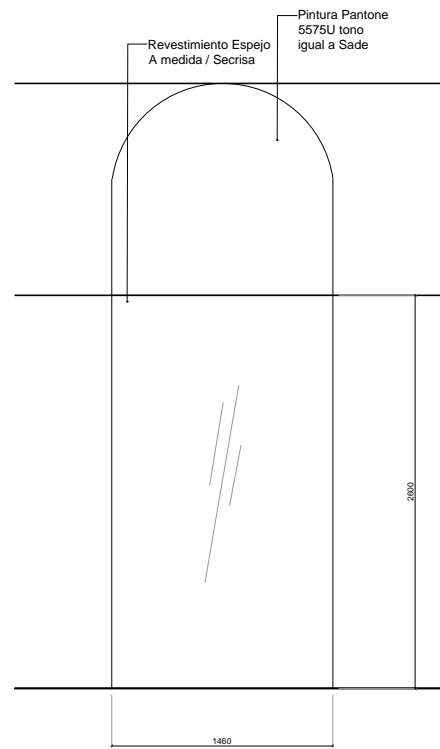
GENERAL NOTES

- Contractor is to submit coordinated shop drawings to designer for approval prior to construction or installation of any item.
- If dimensions are shown that conflict with the above notes, the issue is to be brought to the attention of designer for resolution prior to construction or installation.
- This project only refers to the interior design of the space, without taking into account the local or state regulations. The architect will be responsible for compliance.
- Each element must be installed in relation to the recommendations of the suppliers.
- This project can not be reproduced without previous authorization of EstudiHac.

SPECIFIC NOTES

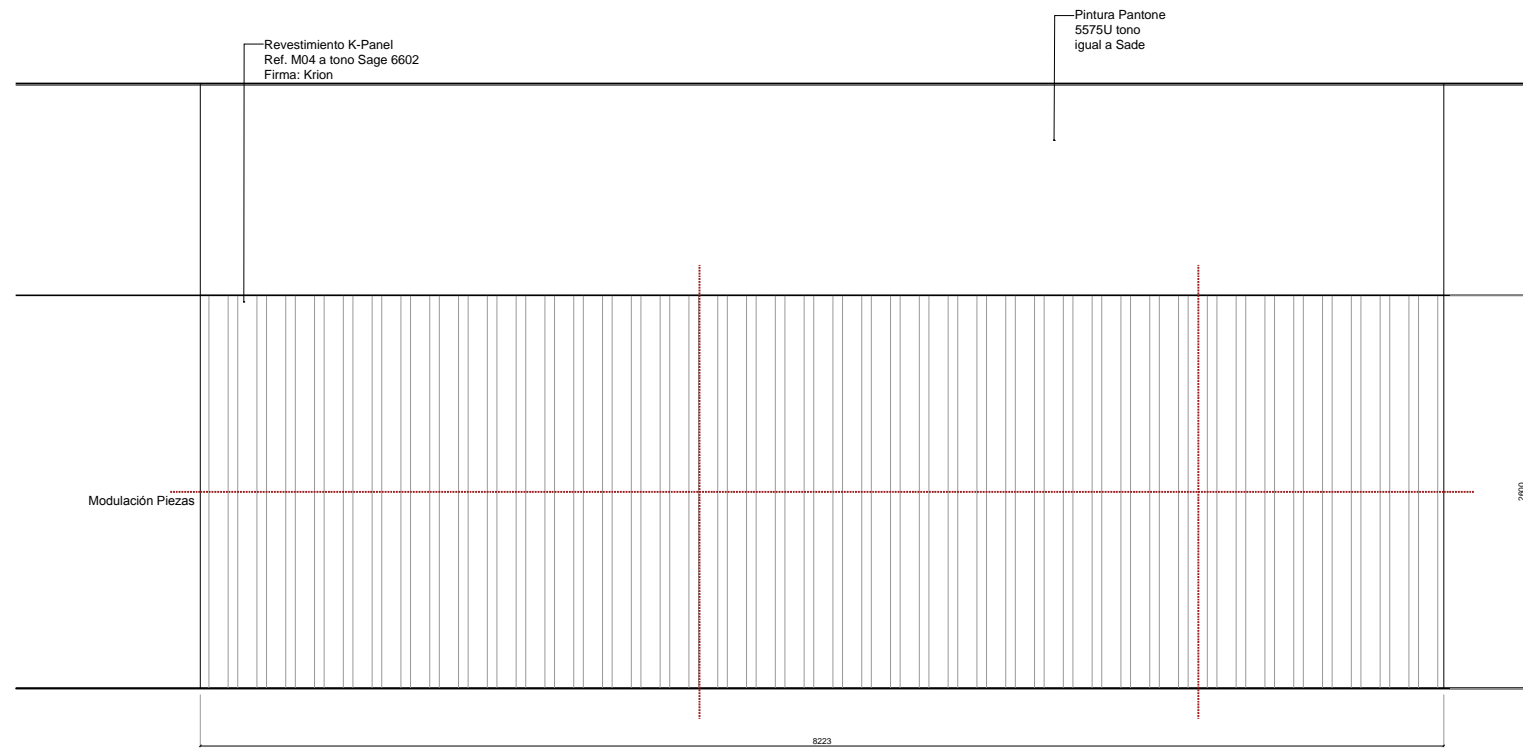
- ** APLICA A:
-PUERTAS CASTALLA
-HAFELE
-KRION
-BARIPERFIL

CA24 Carpintería espejo en pasillo

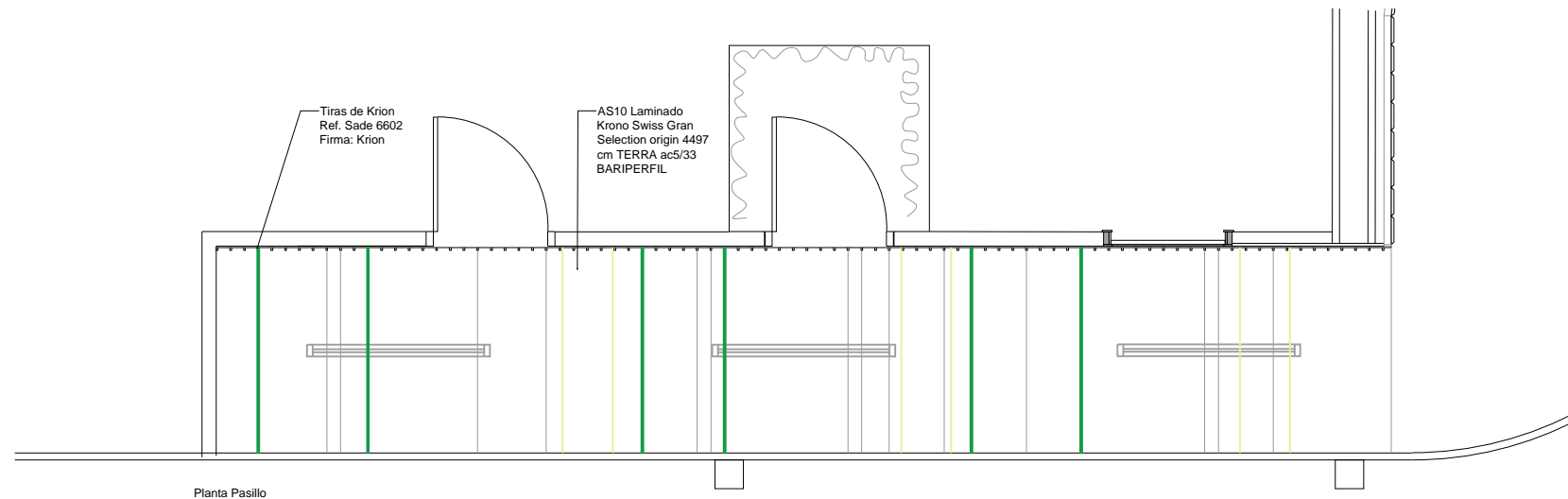


Alzado espejo frontal

CA24 Carpintería K-Panel en pasillo



Alzado K-Panel



estudi{H}ac

Turia, 7
46008 Valencia - Spain
t +34 96 321 96 22
estudihac@estudihac.com
www.estudihac.com

FERIA VALENCIA

estudi{H}ac

all rights reserved © 2019 estudi{H}ac

INTERIOR PROJECT:

FIMMA-MADERALIA 2020

DESIGN DEVELOPMENT

EMPLAZAMIENTO:

PLANTA GENERAL

PLAN N°: 4609-DD-CA24 H2 DE H2 REV01

NAME: DISTRIBUCION Y CARPINTERÍA
PUERTAS Y REVEST. PASILLO

SCALE: 1: 50

DATE: 2019 / 10

UNITS: meters

DIMENSIONS: A 3

REVISION TABLE		DATE
REV	MODIFICATION	
REV01		

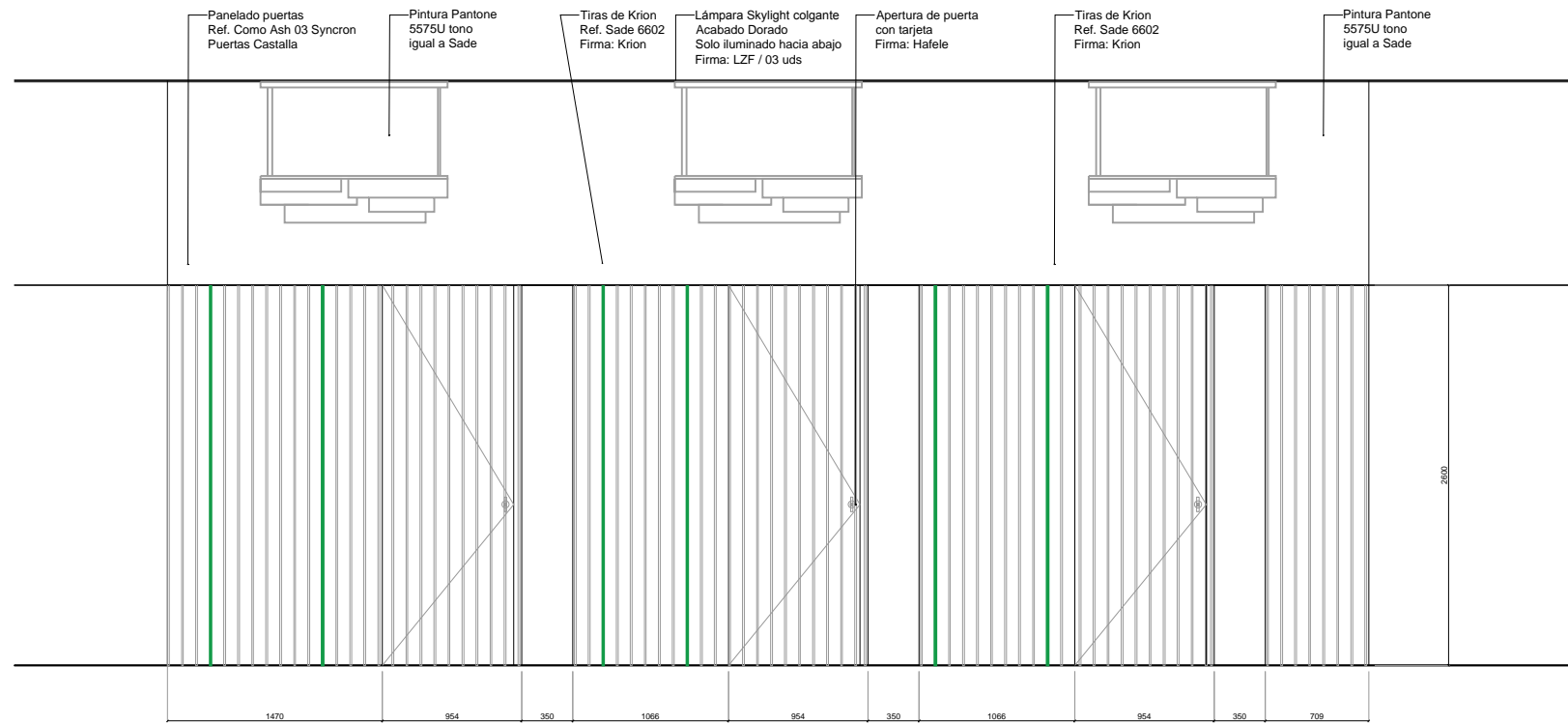
GENERAL NOTES

1. Contractor is to submit coordinated shop drawings to designer for approval prior to construction or installation of any item.
2. If dimensions are shown that conflict with the above notes, the issue is to be brought to the attention of designer for resolution prior to construction or installation.
3. This project only refers to the interior design of the space, without taking into account the local or state regulations. The architect will be responsible for compliance.
4. Each element must be installed in relation to the recommendations of the suppliers.
5. This project can not be reproduced without previous authorization of EstudiHac.

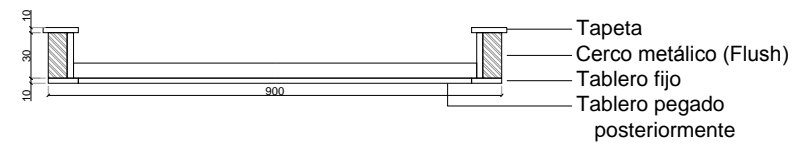
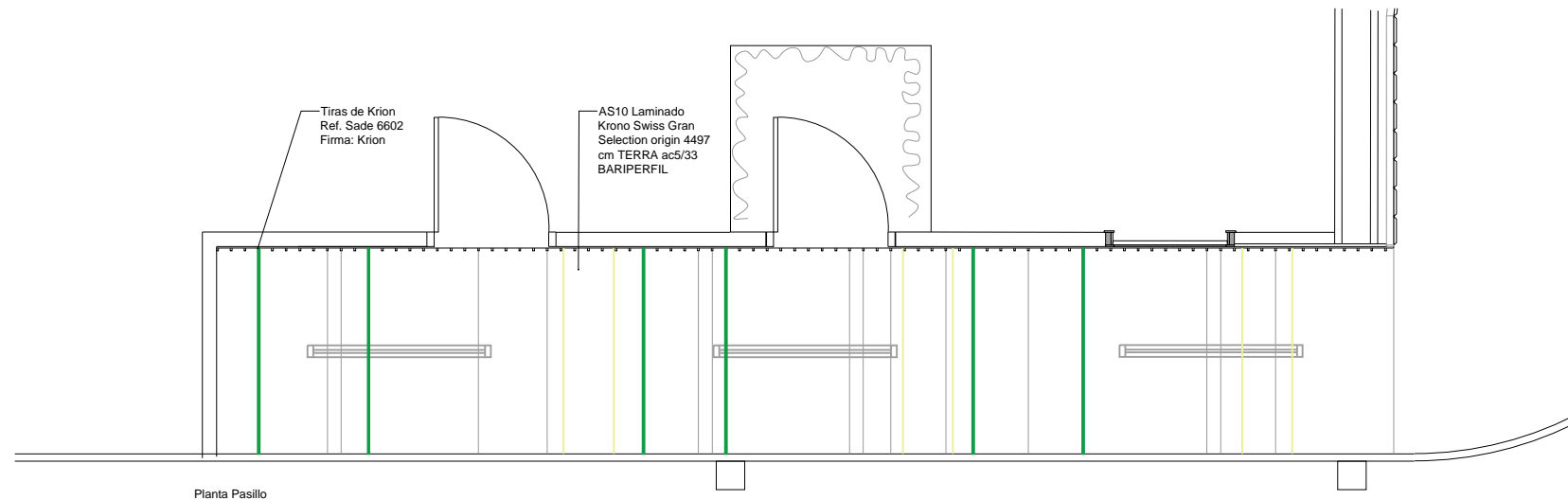
SPECIFIC NOTES

- ** APLICA A:
-SECRISA
-KRION
-BARIPERFIL

CA24 Carpintería puertas pasillos de PUERTAS CASTALLA y herrajes de HAFELE.



Alzado puertas



PLANTA GENERAL

PLAN N°: 4609-DD-CA24 H1 DE H2 REV01

NAME: DISTRIBUCION Y CARPINTERIA
 PUERTAS Y REVEST. PASILLO

SCALE: 1: 50

DATE: 2019 / 10

UNITS: meters

DIMENSIONS: A 3

REVISION TABLE		DATE
REV	MODIFICATION	
REV01		

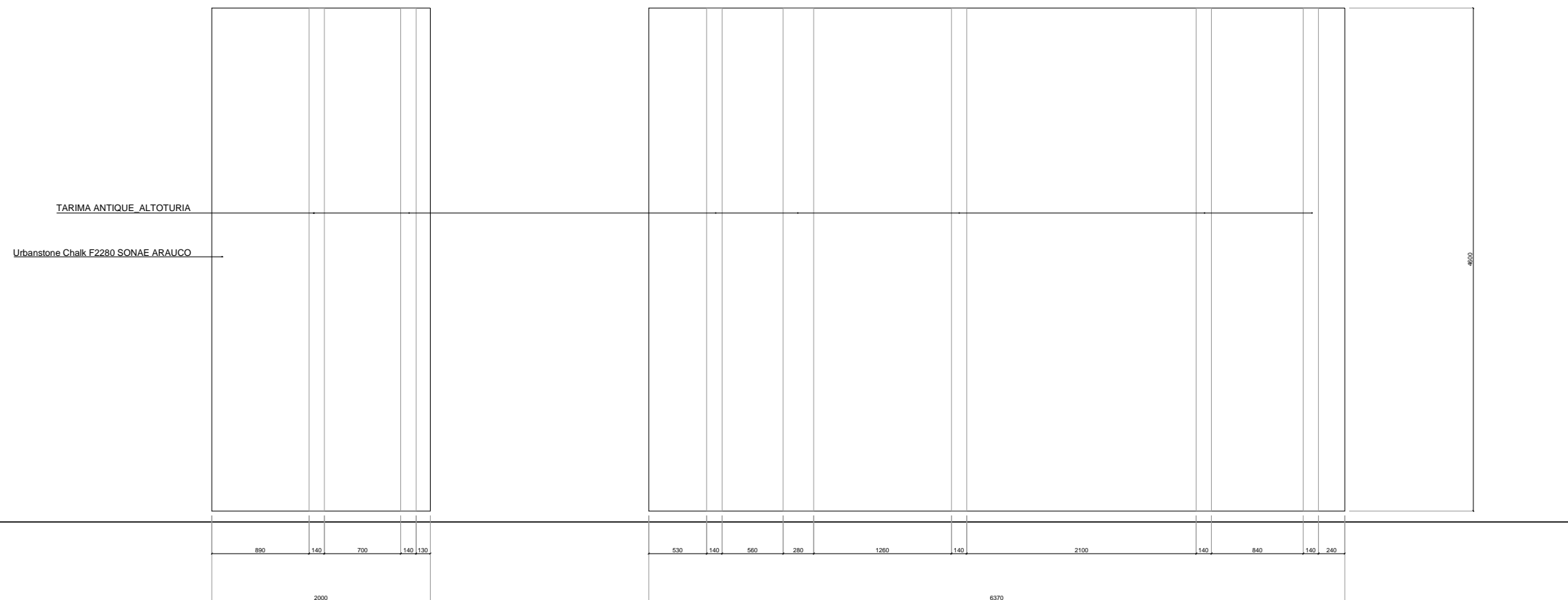
GENERAL NOTES

- Contractor is to submit coordinated shop drawings to designer for approval prior to construction or installation of any item.
- If dimensions are shown that conflict with the above notes, the issue is to be brought to the attention of designer for resolution prior to construction or installation.
- This project only refers to the interior design of the space, without taking into account the local or state regulations. The architect will be responsible for compliance.
- Each element must be installed in relation to the recommendations of the suppliers.
- This project can not be reproduced without previous authorization of EstudiHac.

SPECIFIC NOTES

- ** APLICA A:
 -PUERTAS CASTALLA
 -HAFELE
 -KRION
 -BARIPERFIL

CA23 Alistonado vertical en Tarima 140 gris line sand Firma:
DEKSYSTEM de la pared de la terraza Urbanstone Chalk F2280 Firma:
SONAE ARAUCO



ALZADO FRONTAL | e 1:50

REVISION TABLE		DATE
REV	MODIFICATION	
REV01		

GENERAL NOTES

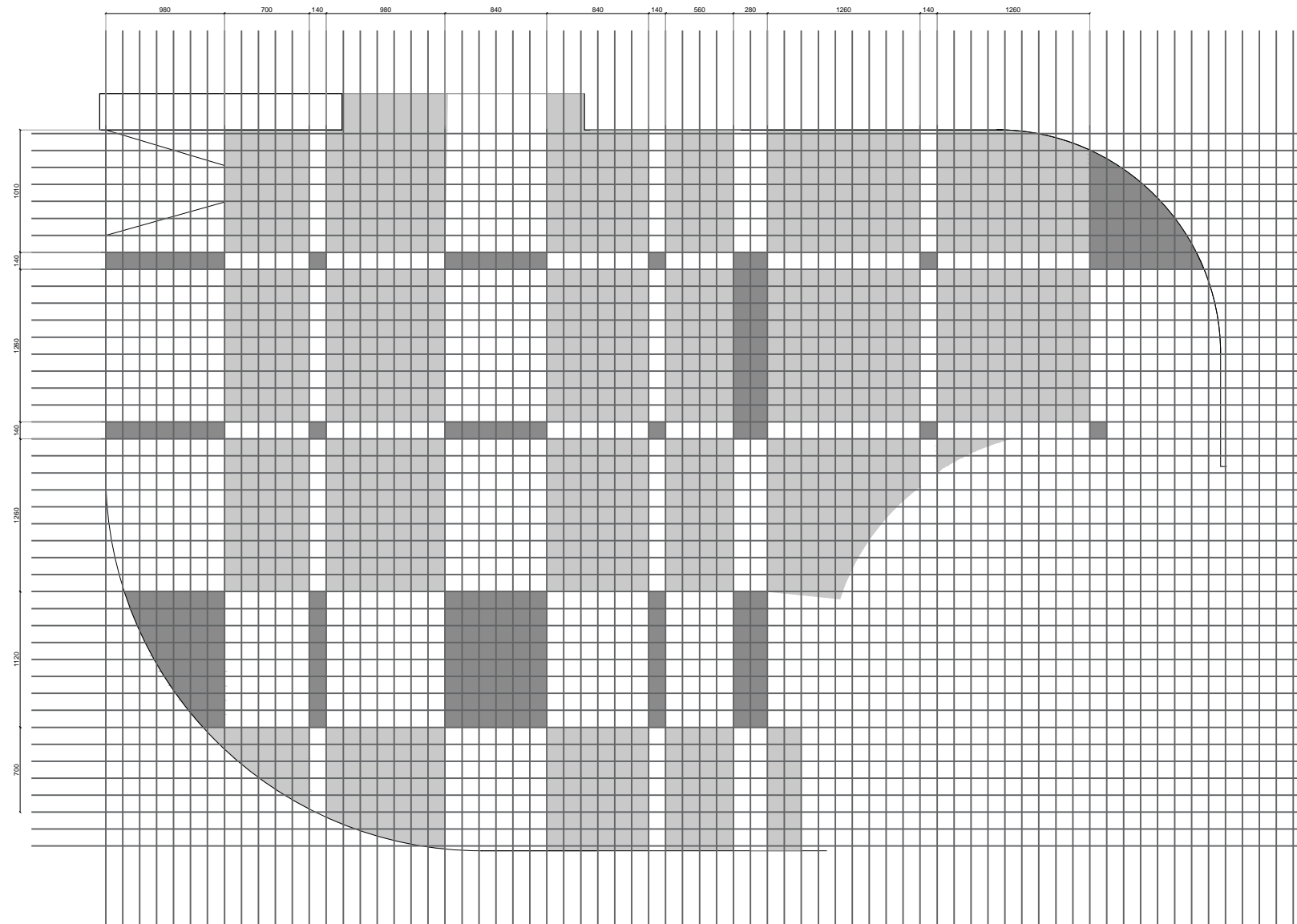
- Contractor is to submit coordinated shop drawings to designer for approval prior to construction or installation of any item.
- If dimensions are shown that conflict with the above notes, the issue is to be brought to the attention of designer for resolution prior to construction or installation.
- This project only refers to the interior design of the space, without taking into account the local or state regulations. The architect will be responsible for compliance.
- Each element must be installed in relation to the recommendations of the suppliers.
- This project can not be reproduced without previous authorization of EstudiHac.

SPECIFIC NOTES

**** APLICA A:**
-ALTOTURIA
-SONAE ARAUCO

CA22 Diseño de tarima con forma de tartán. Combinación de madera gris Ref. 140 Gris Line Sand (DECKSYSTEM), madera negra Ref. 140 antracita (DECKSYSTEM) y madera oscura Ref. Capsuel Habano Greyma (ALTOTURIA)

TARIMA ANTIQUE _ ALTOTURIA
 TARIMA ASH BLANCO _ ALTOTURIA
 CAPSULE HABANO GREYMA_ALTOTURIA



PLANTA | e 1:50

REVISION TABLE		DATE
REV	MODIFICATION	
REV01		

- GENERAL NOTES**
- Contractor is to submit coordinated shop drawings to designer for approval prior to construction or installation of any item.
 - If dimensions are shown that conflict with the above notes, the issue is to be brought to the attention of designer for resolution prior to construction or installation.
 - This project only refers to the interior design of the space, without taking into account the local or state regulations. The architect will be responsible for compliance.
 - Each element must be installed in relation to the recommendations of the suppliers.
 - This project can not be reproduced without previous authorization of EstudiHac.

SPECIFIC NOTES

** APLICA A:
-ALTOTURIA

PLANTA GENERAL

PLAN N°: 4609-DD-CA21 H1 DE H2

NAME: DISTRIBUCION Y CARPINTERIA
TABURETES. LOUNGE

SCALE: 1: 20

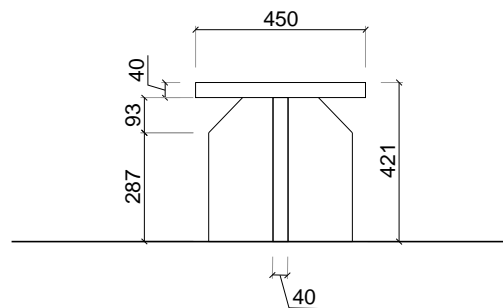
DATE: 2019 / 10

UNITS: meters		DIMENSIONS: A 3	
REVISION TABLE		DATE	
REV	MODIFICATION		

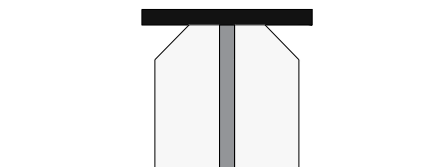
GENERAL NOTES

- Contractor is to submit coordinated shop drawings to designer for approval prior to construction or installation of any item.
- If dimensions are shown that conflict with the above notes, the issue is to be brought to the attention of designer for resolution prior to construction or installation.
- This project only refers to the interior design of the space, without taking into account the local or state regulations. The architect will be responsible for compliance.
- Each element must be installed in relation to the recommendations of the suppliers.
- This project can not be reproduced without previous authorization of EstudiHac.

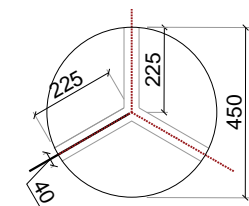
SPECIFIC NOTES



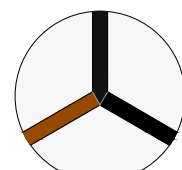
ALZADO FRONTAL | e 1:20



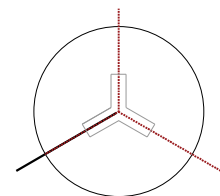
ALZADO FRONTAL | e 1:20



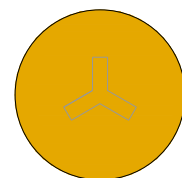
PLANTA | e 1:20



PLANTA | e 1:20

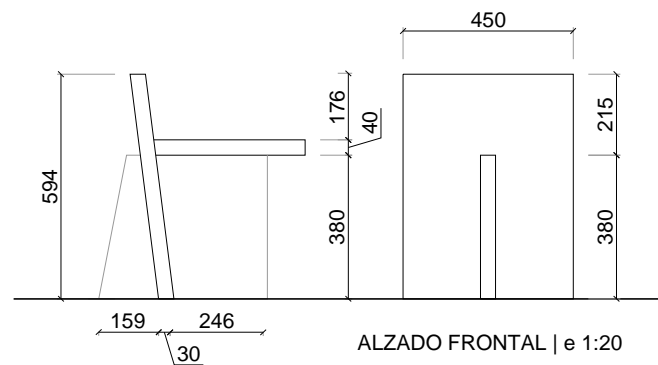


BASE | e 1:20

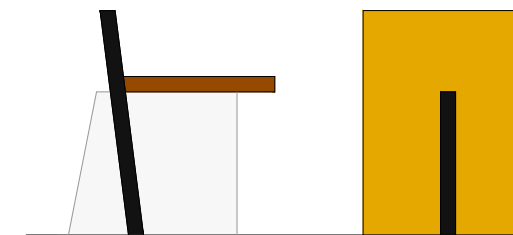


BASE | e 1:20

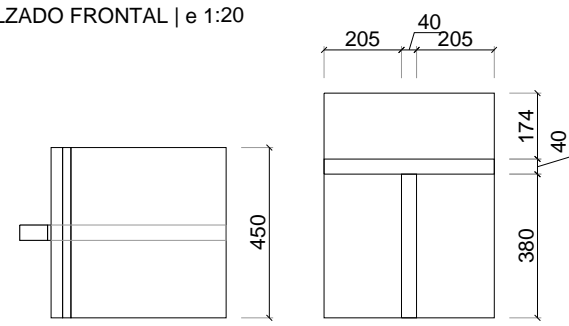
CA21 A 01/02 TABURETE REDONDO | ALVIC | 10 UNIDADES



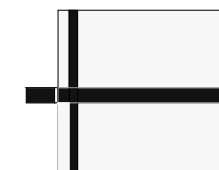
ALZADO FRONTAL | e 1:20



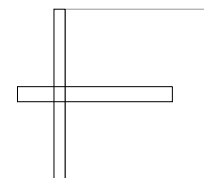
ALZADO FRONTAL | e 1:20



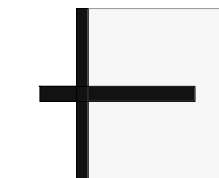
PLANTA | e 1:20



PLANTA | e 1:15



BASE | e 1:20



BASE | e 1:20

CA21 B 01/02 TABURETE CUADRADO | SONAE ARAUCO | 10 UNIDADES

- SONAE ARAUCO NEW MOON 6267 FUSION
- SONAE ARAUCO GALET GREY TF L06002
- ALVIC CURRY SM
- SONAE ARAUCO MESSINA OAK M3892
- SONAE ARAUCO UNIQUEWHITE SPT B4401

- ALVIC CURRY SM
- SONAE ARAUCO GALET GREY TF L06002
- SONAE ARAUCO UNIQUEWHITE SPT B4401
- SONAE ARAUCO MESSINA OAK M3892
- SONAE ARAUCO NEW MOON 6267 FUSION



PLANTA GENERAL

PLAN N°: 4609-DD-CA21

NAME: DISTRIBUCION Y CARPINTERIA
TABURETES. LOUNGE

SCALE: 1: 20

DATE: 2019 / 10

UNITS: meters		DIMENSIONS: A 3	
REVISION TABLE		DATE	
REV	MODIFICATION		

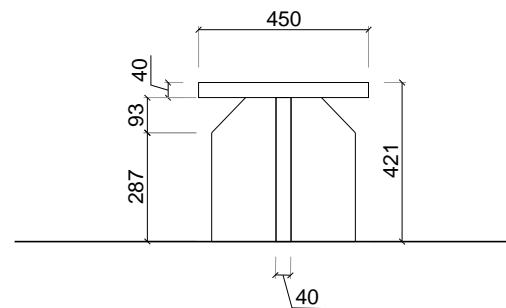
GENERAL NOTES

- Contractor is to submit coordinated shop drawings to designer for approval prior to construction or installation of any item.
- If dimensions are shown that conflict with the above notes, the issue is to be brought to the attention of designer for resolution prior to construction or installation.
- This project only refers to the interior design of the space, without taking into account the local or state regulations. The architect will be responsible for compliance.
- Each element must be installed in relation to the recommendations of the suppliers.
- This project can not be reproduced without previous authorization of EstudiHac.

SPECIFIC NOTES

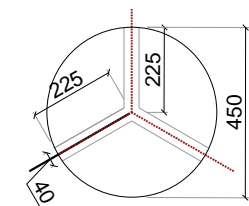
CA21A 02.- Taburete Redondo. Lounge

05 ud

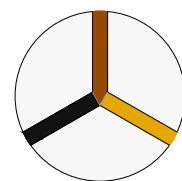


ALZADO FRONTAL | e 1:20

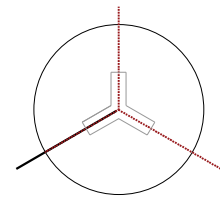
ALZADO FRONTAL | e 1:20



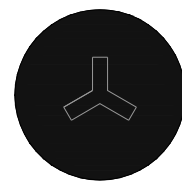
PLANTA | e 1:20



PLANTA | e 1:20



BASE | e 1:20



BASE | e 1:20

CA21 A 01/02 TABURETE REDONDO | ALVIC | 10 UNIDADES

- SONAE ARAUCO NEW MOON 6267 FUSION
- SONAE ARAUCO GALET GREY TF L06002
- ALVIC CURRY SM
- SONAE ARAUCO MESSINA OAK M3892
- SONAE ARAUCO UNIQUEWHITE SPT B4401

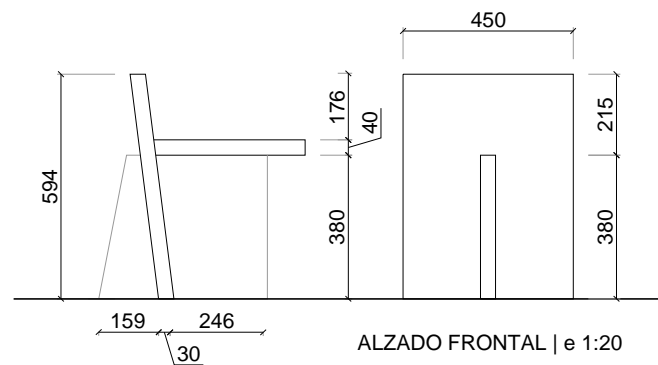


Tableros Taburete Redondo

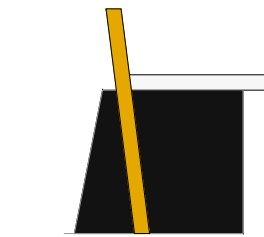
Asiento: 450mmØ / 40mm espesor
Patas: 288*170*381*80*129mm / 40mm espesor (3uds)

CA21B 02.- Taburete Cuadrado. Lounge

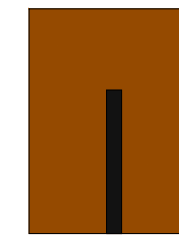
05 ud



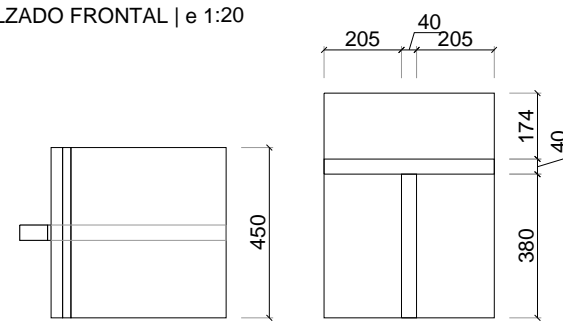
ALZADO FRONTAL | e 1:20



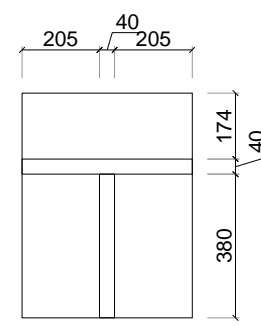
ALZADO FRONTAL | e 1:20



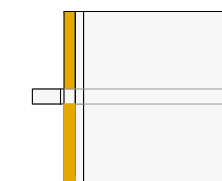
ALZADO FRONTAL | e 1:20



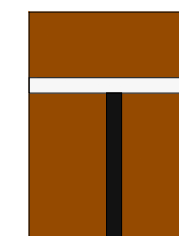
PLANTA | e 1:20



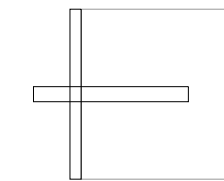
PLANTA | e 1:20



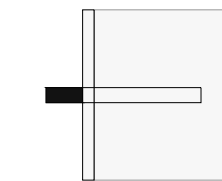
PLANTA | e 1:15



PLANTA | e 1:15



BASE | e 1:20



BASE | e 1:20

CA21 B 01/02 TABURETE CUADRADO | SONAE ARAUCO | 10 UNIDADES

- ALVIC CURRY SM
- SONAE ARAUCO GALET GREY TF L06002
- SONAE ARAUCO UNIQUEWHITE SPT B4401
- SONAE ARAUCO MESSINA OAK M3892
- SONAE ARAUCO NEW MOON 6267 FUSION



Tableros Taburete Cuadrado

Asiento: 410*450mm / 40mm espesor
Respaldo: 600*450mm / 40mm espesor
Soporte: 372*380*446*387mm / 40mm espesor

REVISION TABLE		DATE
REV	MODIFICATION	
REV01		

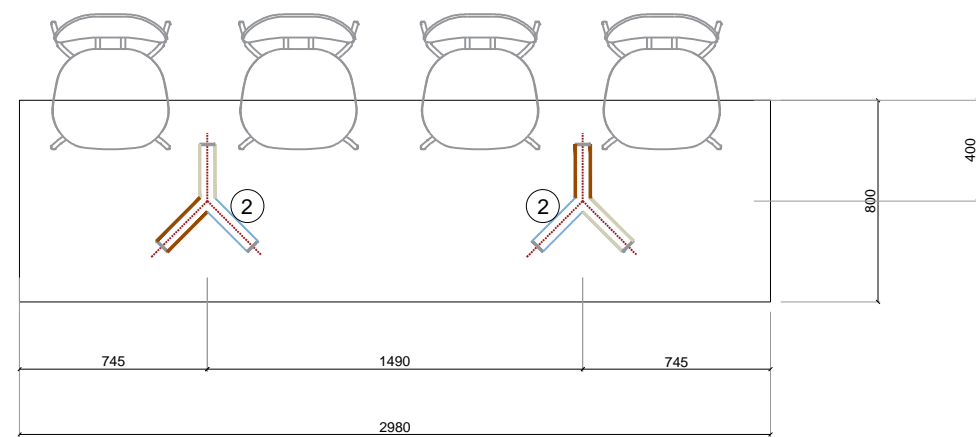
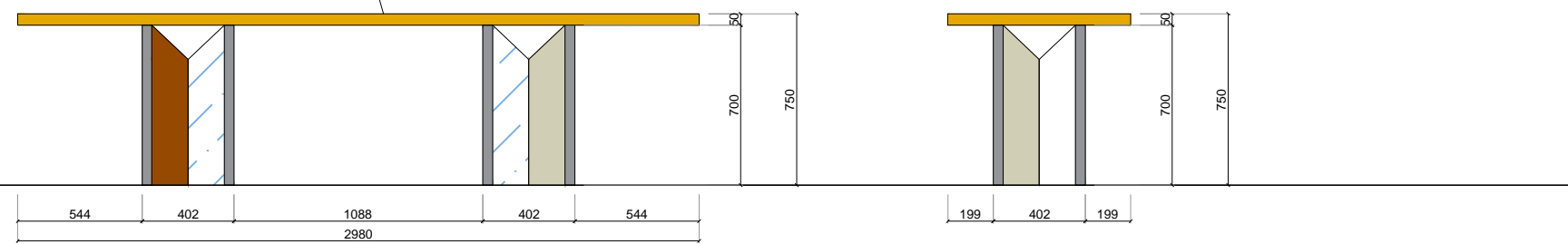
GENERAL NOTES

- Contractor is to submit coordinated shop drawings to designer for approval prior to construction or installation of any item.
- If dimensions are shown that conflict with the above notes, the issue is to be brought to the attention of designer for resolution prior to construction or installation.
- This project only refers to the interior design of the space, without taking into account the local or state regulations. The architect will be responsible for compliance.
- Each element must be installed in relation to the recommendations of the suppliers.
- This project can not be reproduced without previous authorization of EstudiHac.

SPECIFIC NOTES

- APLICA A:
-VALRESA
-ALVIC
-BLANQUER

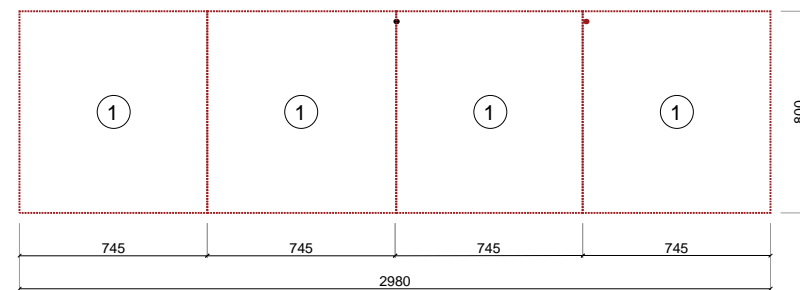
Impresión sobre plancha de madera maciza con VALRESA, según gráfica



CA20 Mesa a medida formada por 4 paneles de 80x74,5cm con laminados de distintos acabados de ALVIC e impresiones gráficas de VALRESA (Gráfica definida en diseño gráfico)

Tabla de Madera de Pino

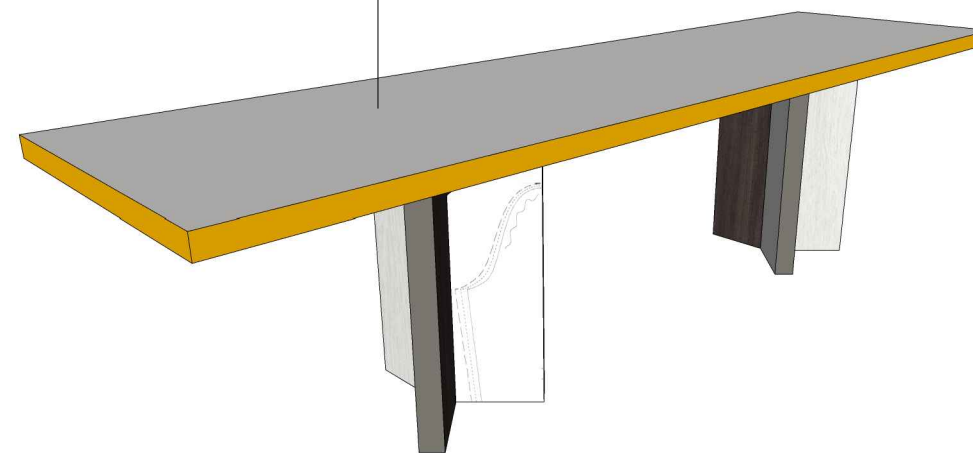
- 4ud de 800x745 Formada por listones de pino al natural (suministrado por Blanquer)
- 240x700x60



Modulación para impresión

- ALVIC CURRY SM
- VALRESA
- ALVIC GRIS PLOMO SM
- ALVIC COMO ASH03
- ALVIC ROBLE MURATTI 04

Tabla suministrada por Blanquer



PLANTA GENERAL

PLAN Nº: 4609-DD-CA18 REV01

NAME: DISTRIBUCION Y CARPINTERÍA
PANELADO LOUNGE

SCALE: 1: 75

DATE: 2019 / 10

UNITS: meters DIMENSIONS: A 3

REVISION TABLE		DATE
REV	MODIFICATION	
REV01		

GENERAL NOTES

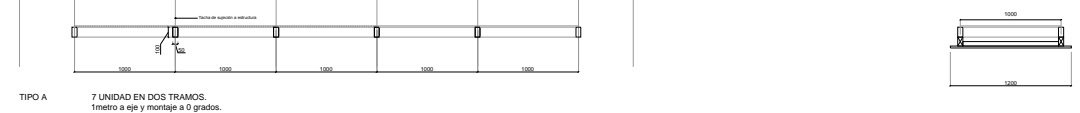
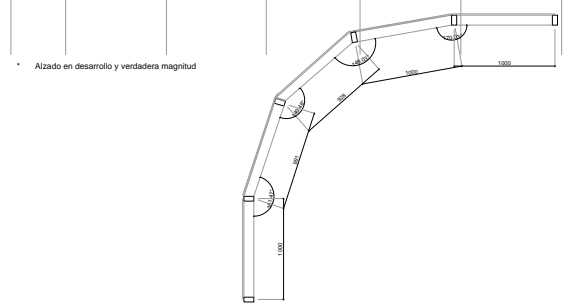
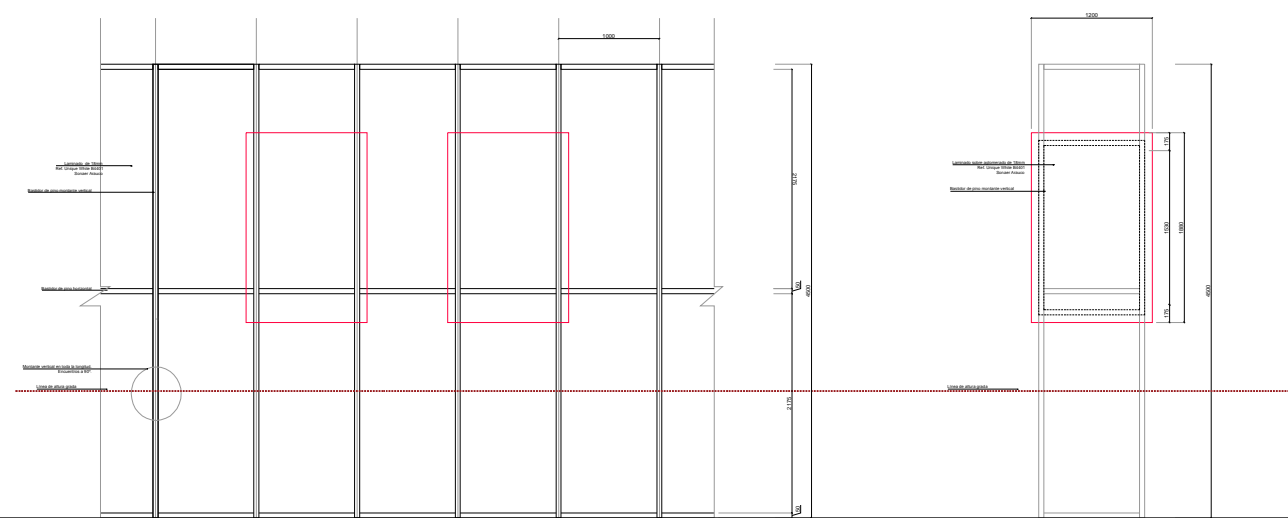
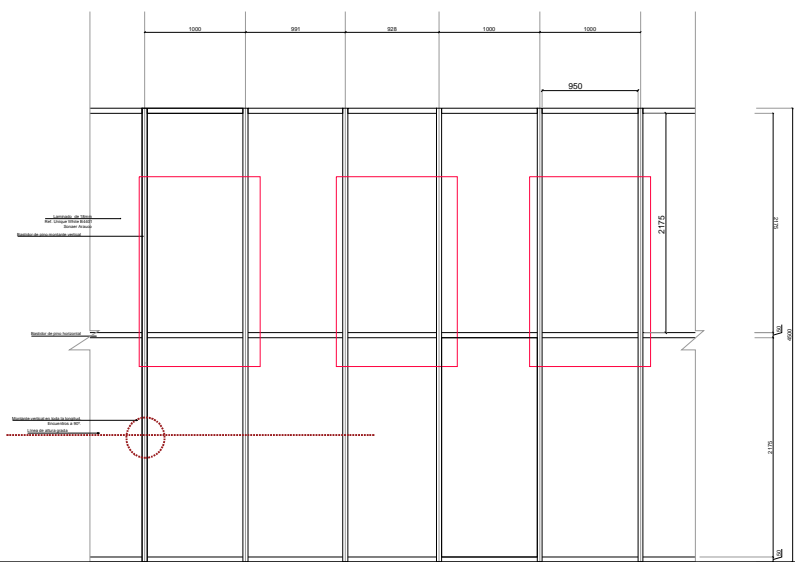
- Contractor is to submit coordinated shop drawings to designer for approval prior to construction or installation of any item.
- If dimensions are shown that conflict with the above notes, the issue is to be brought to the attention of designer for resolution prior to construction or installation.
- This project only refers to the interior design of the space, without taking into account the local or state regulations. The architect will be responsible for compliance.
- Each element must be installed in relation to the recommendations of the suppliers.
- This project can not be reproduced without previous authorization of EstudiHac.

SPECIFIC NOTES

**** APLICA A:**
-SONAE ARAUCO
-HAFELE

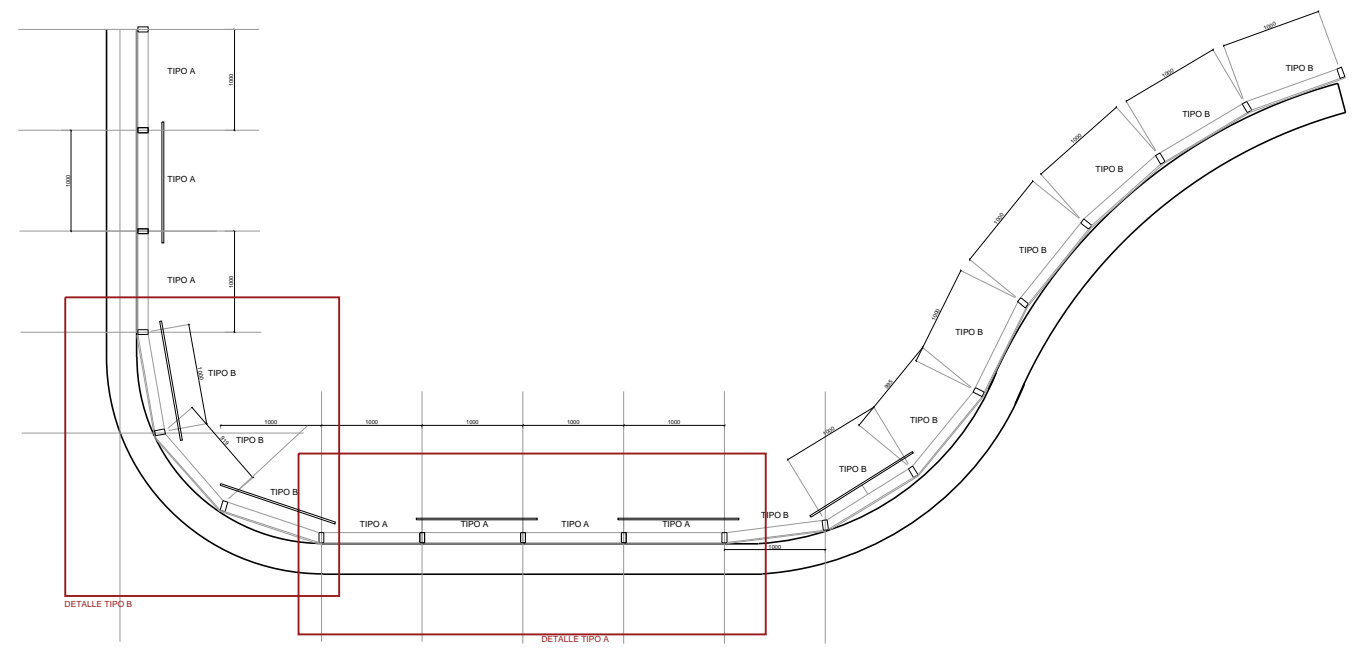
TIPO B 11 UNIDAD EN DOS TRAMOS.
1 metro a eje y montaje a grado variable en función del trazado del espacio.

TIPO A 6 paneles de laminado Unique White B4401 Firma: SONAE ARAUCO con contrachapado trasero de 18mm y anclados a estructura de pino de montantes verticales sistema HAFELE.



Medición

Paneles 950*2175	36uds	74,16m²
------------------	-------	---------



PLANTA GENERAL

PLAN N°: 4609-DD-CA17 H1 DE H2

NAME: DISTRIBUCION Y CARPINTERIA
GRADAS LOUNGE

SCALE: 1: 50

DATE: 2019 / 10

UNITS: meters DIMENSIONS: A 3

REVISION TABLE DATE

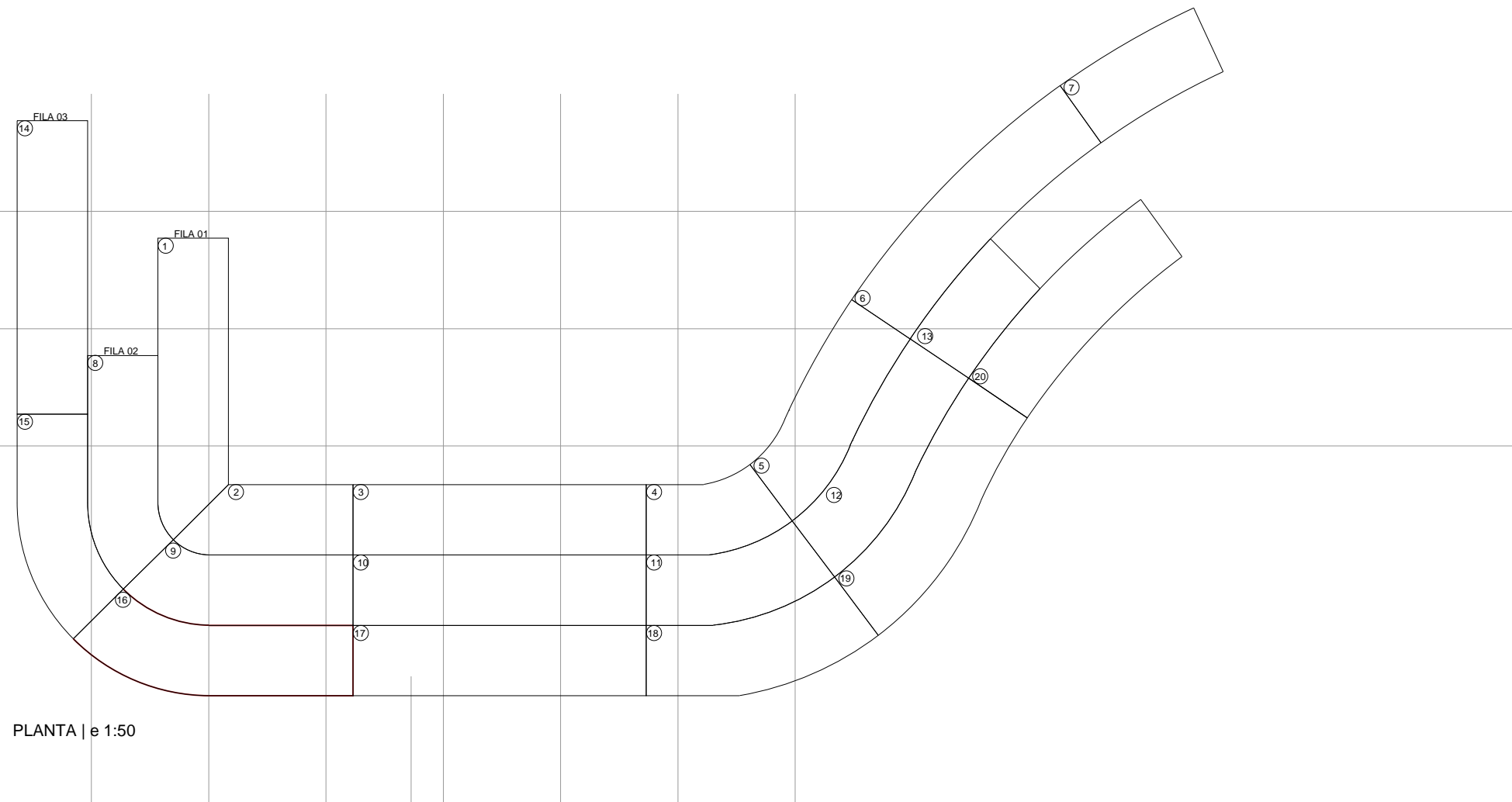
REV	MODIFICATION	DATE
REV01	SE AÑADE NOTA	

GENERAL NOTES

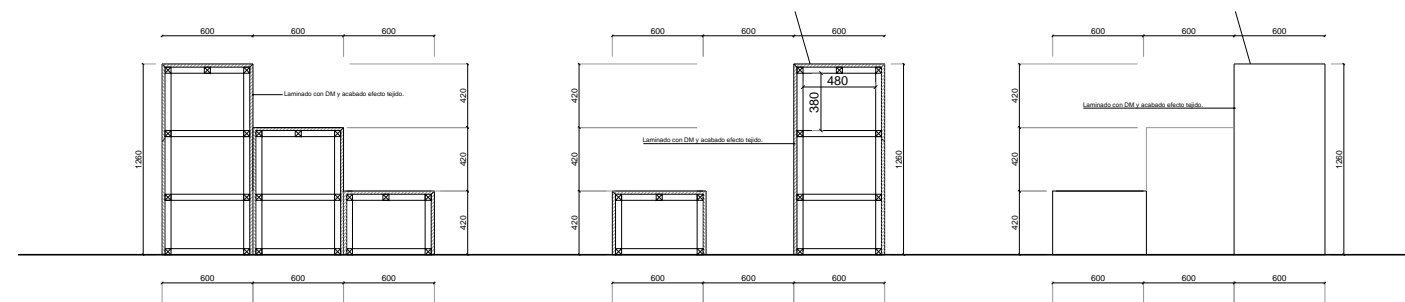
- Contractor is to submit coordinated shop drawings to designer for approval prior to construction or installation of any item.
- If dimensions are shown that conflict with the above notes, the issue is to be brought to the attention of designer for resolution prior to construction or installation.
- This project only refers to the interior design of the space, without taking into account the local or state regulations. The architect will be responsible for compliance.
- Each element must be installed in relation to the recommendations of the suppliers.
- This project can not be reproduced without previous authorization of EstudiHac.

SPECIFIC NOTES

EL MATERIAL DE REVESTIMIENTO DE BARIPERFIL SE SUMINISTRARÁ EN PLACAS DE 2440 X 1220 SOBRE MDF DE 3MM PARA PERMITIR EL CURVADO. LA ESTRUCTURA DE APOYO SERÁ DE MDF Y SE SUMINISTRARÁ Y COLOCARÁ POR MONTADOR.



PLANTA | e 1:50



DETALLE 01 | e 1:50

DETALLE 02 | e 1:50

DETALLE 03 | e 1:50

Modulación Gradass

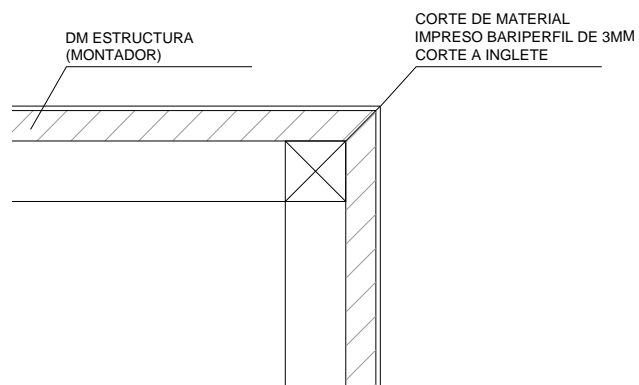
- ① Tapa: 1,42m² / Base: 1,42m² / Alzado: 2,50m² = 5,34m²
- ② Tapa: 0,79m² / Base: 0,79m² / Alzado: 1,63m² = 3,21m²
- ③ Tapa: 1,50m² / Base: 1,50m² / Alzado: 2,60m² = 5,60m²
- ④ Tapa: 0,68m² / Base: 0,68m² / Alzado: 1,46m² = 2,82m²
- ⑤ Tapa: 1,05m² / Base: 1,05m² / Alzado: 1,98m² = 4,08m²
- ⑥ Tapa: 1,47m² / Base: 1,47m² / Alzado: 2,56m² = 5,5m²
- ⑦ Tapa: 0,75m² / Base: 0,75m² / Alzado: 1,56m² = 3,06m²

Modulación Gradass

- ⑧ Tapa: 1,10m² / Base: 1,10m² / Alzado: 4,09m² = 6,29m²
- ⑨ Tapa: 1,08m² / Base: 1,08m² / Alzado: 4,03m² = 6,19m²
- ⑩ Tapa: 1,50m² / Base: 1,50m² / Alzado: 5,20m² = 8,20m²
- ⑪ Tapa: 0,90m² / Base: 0,90m² / Alzado: 3,52m² = 5,32m²
- ⑫ Tapa: 1,17m² / Base: 1,17m² / Alzado: 4,30m² = 6,64m²
- ⑬ Tapa: 0,62m² / Base: 0,62m² / Alzado: 2,74m² = 3,98m²

Modulación Gradass

- ⑭ Tapa: 1,50m² / Base: 1,50m² / Alzado: 7,8m² = 10,81m²
- ⑮ Tapa: 1,08m² / Base: 1,08m² / Alzado: 6,00m² = 8,20m²
- ⑯ Tapa: 1,36m² / Base: 1,36m² / Alzado: 7,18m² = 9,90m²
- ⑰ Tapa: 1,50m² / Base: 1,50m² / Alzado: 7,80m² = 10,81m²
- ⑱ Tapa: 1,16m² / Base: 1,16m² / Alzado: 6,30m² = 9,63m²
- ⑲ Tapa: 1,32m² / Base: 1,32m² / Alzado: 6,99m² = 9,63m²
- ⑳ Tapa: 1,21m² / Base: 1,21m² / Alzado: 6,60m² = 9,02m²



DETALLE 01 | e 1:5

PLANTA GENERAL

PLAN N°: 4609-DD-CA17 H2 DE H2

NAME: DISTRIBUCION Y CARPINTERÍA
GRADAS LOUNGE

SCALE: 1: 50

DATE: 2019 / 10

UNITS: meters

DIMENSIONS: A 3

REVISION TABLE

DATE

REV MODIFICATION

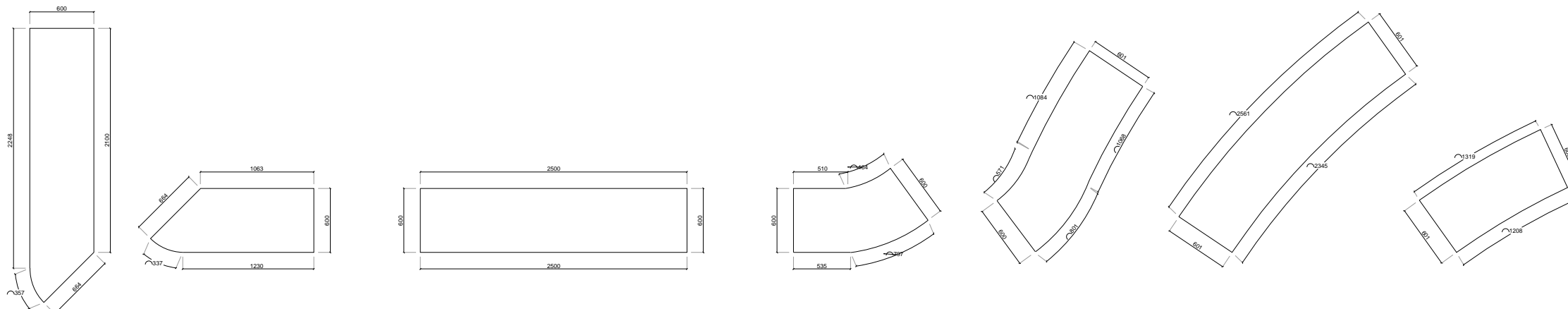
REV01 SE AÑADE NOTA

GENERAL NOTES

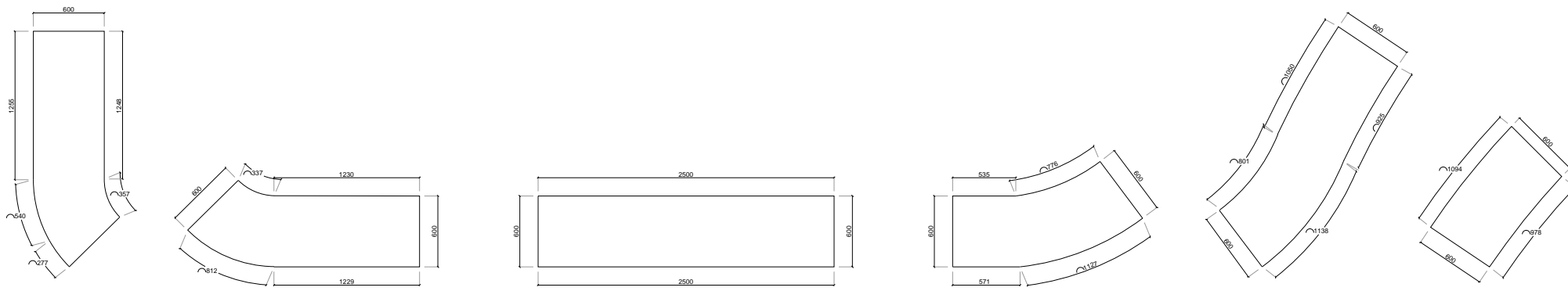
- 1. Contractor is to submit coordinated shop drawings to designer for approval prior to construction or installation of any item.
- 2. If dimensions are shown that conflict with the above notes, the issue is to be brought to the attention of designer for resolution prior to construction or installation.
- 3. This project only refers to the interior design of the space, without taking into account the local or state regulations. The architect will be responsible for compliance.
- 4. Each element must be installed in relation to the recommendations of the suppliers.
- 5. This project can not be reproduced without previous authorization of EstudiHac.

SPECIFIC NOTES

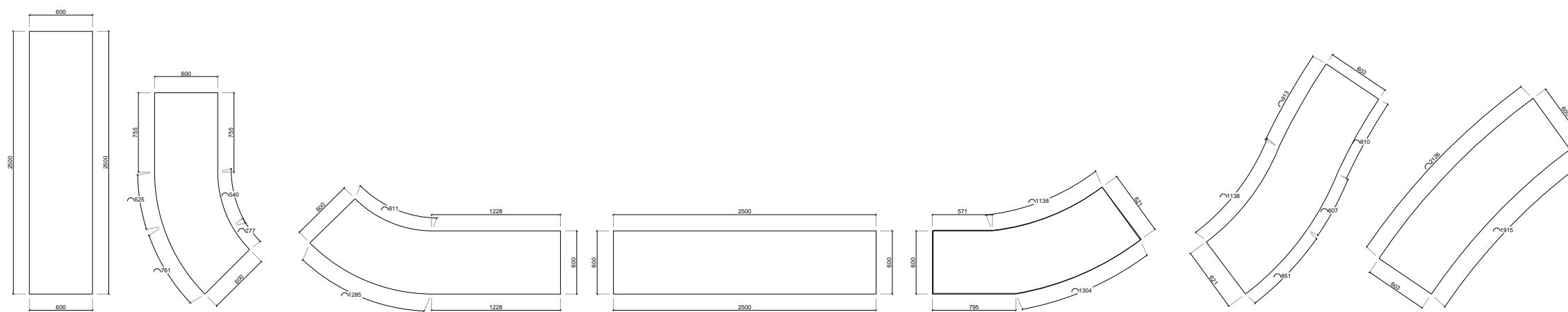
EL MATERIAL DE REVESTIMIENTO DE BARIPERFIL SE SUMINISTRARÁ EN PLACAS DE 2440 X 1220 SOBRE MDF DE 3MM PARA PERMITIR EL CURVADO. LA ESTRUCTURA DE APOYO SERÁ DE MDF Y SE SUMINISTRARÁ Y COLOCARÁ POR MONTADOR.



MODULACIÓN COTAS | FILA01 | e 1:50

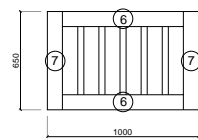
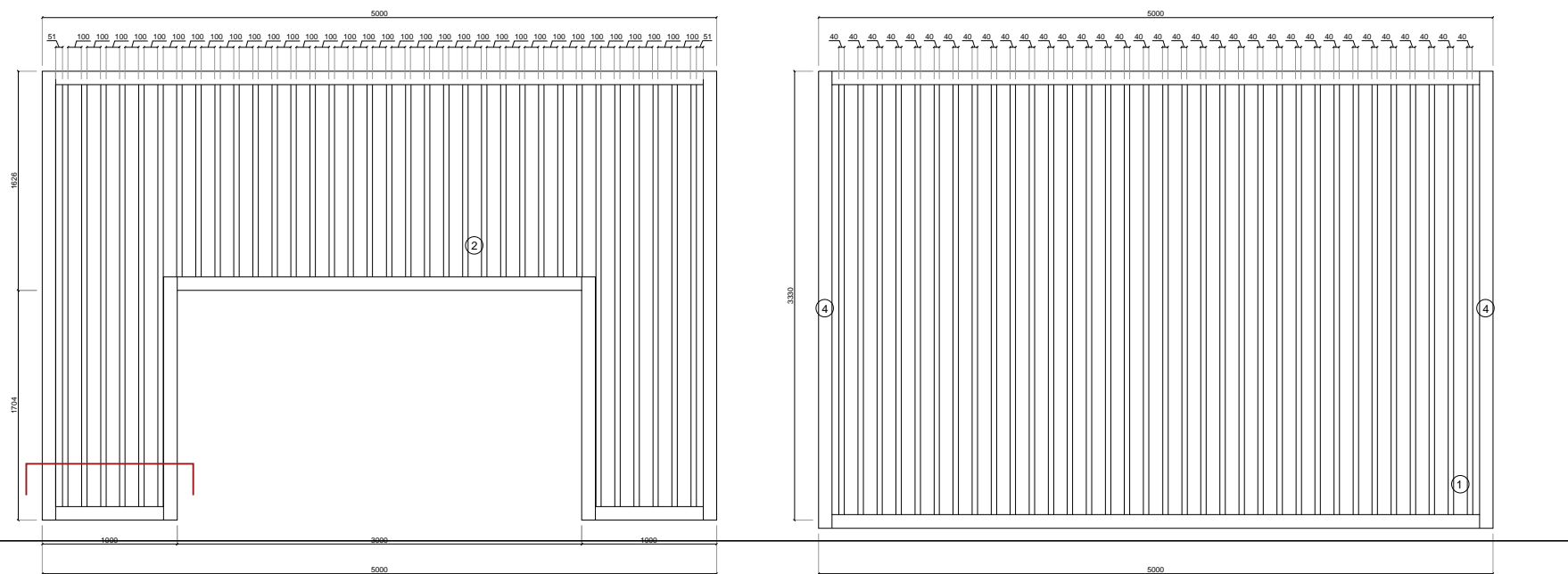


MODULACIÓN COTAS | FILA02 | e 1:50

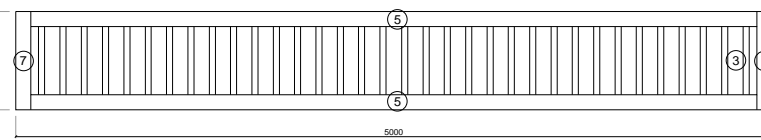
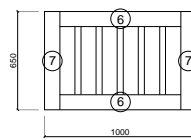


MODULACIÓN COTAS | FILA03 | e 1:50

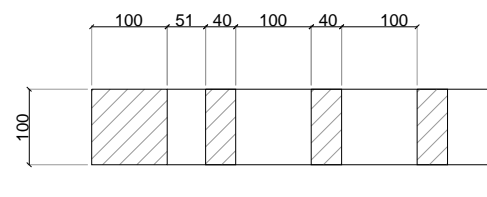
CA16 Barraca a Medida Zona Lounge. Estructura de madera de pino (BLANQUER) de 10x10cm y aislonado interior con listones de madera de 10x4cm



* Despiece Frontal



* Despiece Trasero



* Detalle sección

Tabla de Perfiles de Pino Natural

①	40x1000x3390.....	12ud+34ud
②	40x100x1600.....	22ud
③	40x100x650.....	44ud
④	100x100x3330.....	04ud
⑤	100x100x5000.....	02ud
⑥	100x100x1000.....	04ud
⑦	100x100x650.....	06ud
⑧	Tablero formado por tablas de pino para tamaño de 2000x1800	02ud

* Nota: No se ha tenido en cuenta el desperdicio

PLANTA GENERAL

PLAN N°: 4609-DD-CA16 H2 DE H2 REV01

NAME: DISTRIBUCION Y CARPINTERIA
BARRACA. LOUNGE

SCALE: 1: 50

DATE: 2019 / 10

UNITS: meters DIMENSIONS: A 3

REVISION TABLE		DATE
REV	MODIFICATION	
REV01		

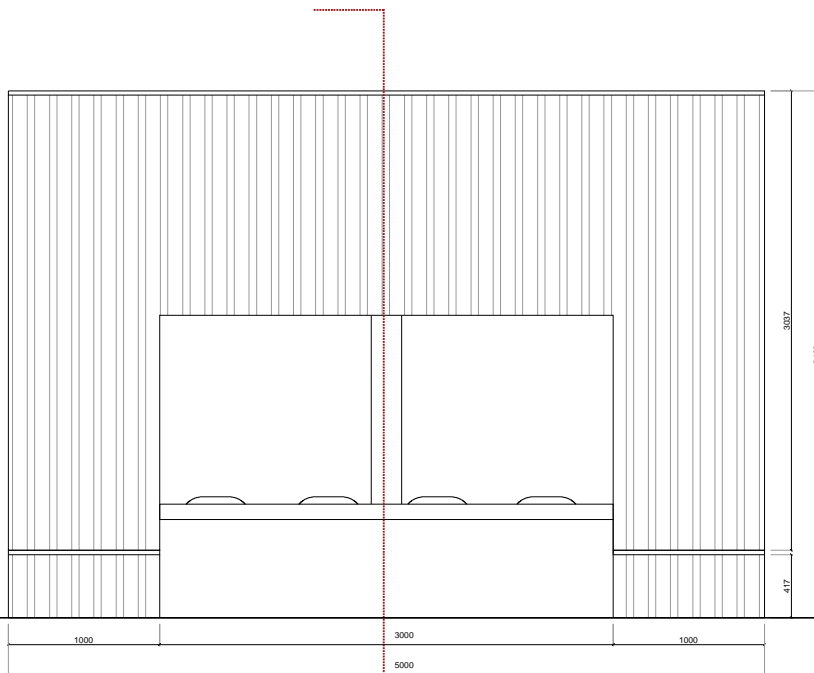
GENERAL NOTES

- Contractor is to submit coordinated shop drawings to designer for approval prior to construction or installation of any item.
- If dimensions are shown that conflict with the above notes, the issue is to be brought to the attention of designer for resolution prior to construction or installation.
- This project only refers to the interior design of the space, without taking into account the local or state regulations. The architect will be responsible for compliance.
- Each element must be installed in relation to the recommendations of the suppliers.
- This project can not be reproduced without previous authorization of EstudiHac.

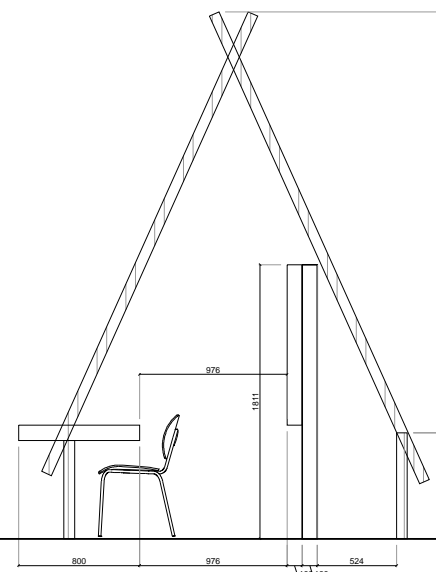
SPECIFIC NOTES

** APLICA A:
-BLANQUER

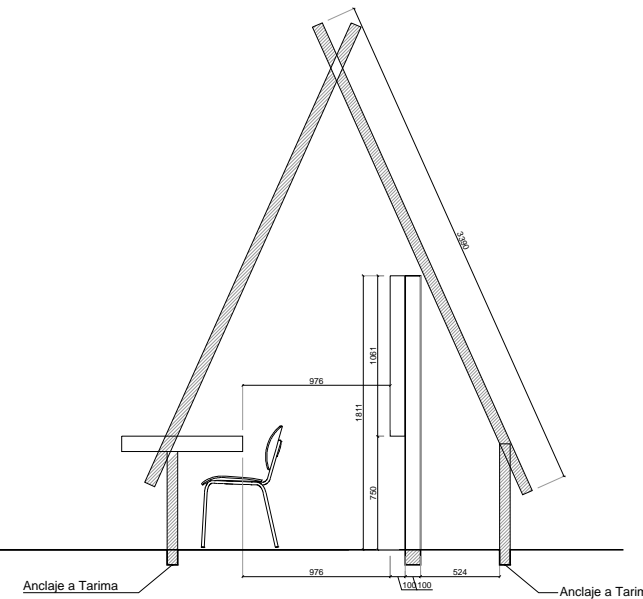
CA16 Barraca a Medida Zona Lounge. Estructura de madera de pino (BLANQUER) de 10x10cm y aislonado interior con listones de madera de 10x4cm



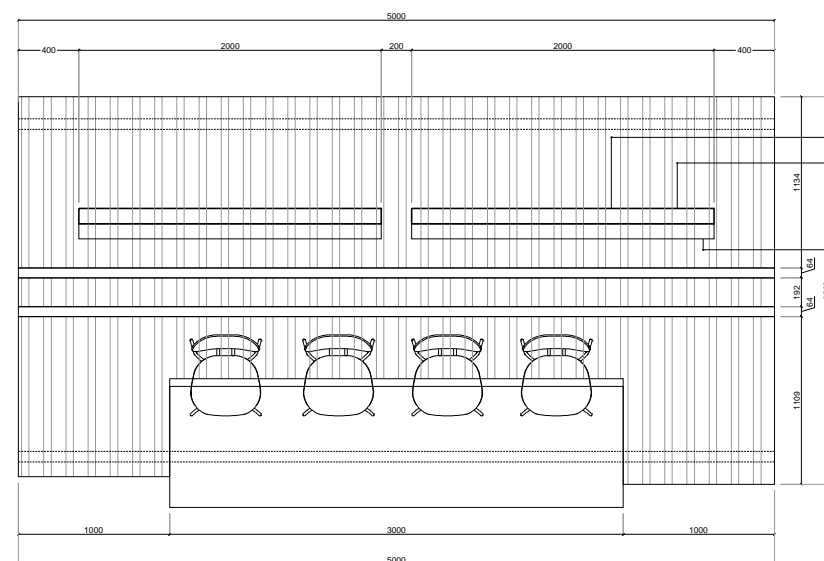
• Alzado Frontal



• Alzado Lateral



• Sección A A'



• Planta

- Tailor (H)otel
- Laminado blanco
Ref. / Unique White B4401
Firma: Sonae Arauco
- Laminado Roble
Ref. / Messina Oak M3892
Firma: Sonae Arauco

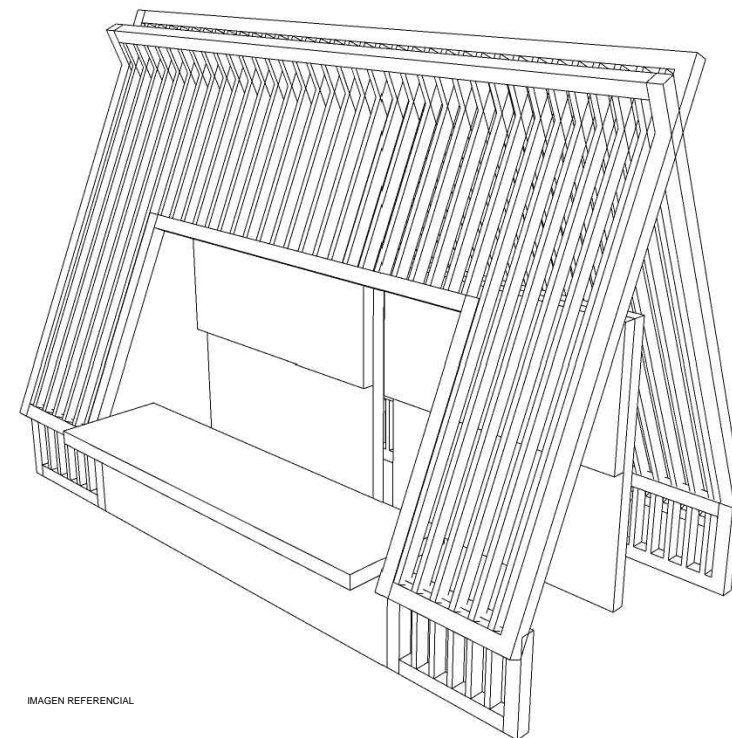


IMAGEN REFERENCIAL

PLANTA GENERAL

PLAN N°: 4609-DD-CA16 H1 DE H2 REV01

NAME: DISTRIBUCION Y CARPINTERIA
BARRACA. LOUNGE

SCALE: 1: 50

DATE: 2019 / 10

UNITS: meters DIMENSIONS: A 3

REVISION TABLE		DATE
REV	MODIFICATION	
REV01		

GENERAL NOTES

1. Contractor is to submit coordinated shop drawings to designer for approval prior to construction or installation of any item.
2. If dimensions are shown that conflict with the above notes, the issue is to be brought to the attention of designer for resolution prior to construction or installation.
3. This project only refers to the interior design of the space, without taking into account the local or state regulations. The architect will be responsible for compliance.
4. Each element must be installed in relation to the recommendations of the suppliers.
5. This project can not be reproduced without previous authorization of EstudiHac.

SPECIFIC NOTES

** APLICA A:
-BLANQUER